

**12v lithium battery packs of the  
same capacity can be  
connected in series at will**





## Overview

---

Yes, you can link battery packs safely. First, charge each pack fully. Use a voltmeter to check the voltage output. Ensure each pack outputs at least 21V (e.g., 5 packs at 4.2V each) before connecting them. This step prevents damage. Can you mix different capacity lithium batteries?

Yes, you can mix different capacity lithium batteries, whether a normal 12V 100Ah battery or a Lithium server rack battery. You can combine different capacity batteries in parallel. You cannot combine different capacity batteries in series. There are a few points you need to consider when wiring in parallel. Let's explore these three points.

What happens if you connect two 12V 50Ah batteries in parallel?

If you connect two 12v 50ah batteries in parallel, it will still be a 12 volt system, but the amps will double to 100ah, so the batteries will last longer. On the other hand, when you connect batteries in series, voltage is increased while capacity (ah) stays the same.

Can lithium batteries with different voltages be grouped in series?

Do not let lithium batteries with different voltages in series. Due to the problem of consistency of lithium batteries, they are grouped in series under the same system (such as ternary or lithium iron), and they also need to be selected with the same voltage, internal resistance, and capacity.

Do I need a 12V battery system?

If you have two 12V, 200Ah hour batteries and you need 12V system for installation. Simply, connect both of the batteries in parallel where the overall battery capacity would be 400Ah and the same voltage level i.e. 12V. Keep in mind that battery discharge quickly in parallel as compared to series batteries connection.

How to connect 3 12V batteries in series?



If your battery allows it, you can repeat the above steps to connect more batteries in series. You can wire three 12V batteries in series to create a 36V battery bank. Once again, just connect the negative terminal of your 2-battery series string to the positive terminal of the third battery.

Why are lithium batteries connected in series?

Lithium batteries are connected in series when the goal is to increase the nominal voltage rating of one individual lithium battery - by connecting it in series strings with at least one more of the same type and specification - to meet the nominal operating voltage of the system the batteries are being installed to support.



## 12v lithium battery packs of the same capacity can be connected in

---



### [All Things You Need to Know about Lithium Battery ...](#)

Do not let lithium batteries with different voltages in series. Due to the problem of consistency of lithium batteries, they are grouped in series under the same ...

[Email Contact](#)

### [Can Batteries with the Same Voltage Be Connected in Series?](#)

When designing or expanding battery-powered systems, a common question arises: Can two battery packs with the same voltage be connected in series? The short answer is yes, but with ...

[Email Contact](#)



### [Batteries in Series vs Parallel: Which is Better?](#)

If you connect two 12v 50ah batteries in parallel, it will still be a 12 volt system, but the amps will double to 100ah, so the batteries will last longer. On the other ...

[Email Contact](#)

### [Can You Mix Different Capacity Lithium Batteries?](#)

There are many ways to connect a group of batteries in both series and parallel at the same time. This is common practice in many battery power appliances, particularly in electric vehicles and ...



[Email Contact](#)



### [Wiring Two Batteries in Series: A Comprehensive Guide](#)

Wiring two batteries in series is a straightforward yet powerful method used to increase voltage output while maintaining the same capacity. ...

[Email Contact](#)



### [Lithium Series, Parallel and Series and Parallel Connections](#)

Connecting multiple lithium batteries into a string of batteries allows us to build a battery bank with the potential to operate at an increased voltage, or with increased capacity and runtime, or both.

[Email Contact](#)



### [Series Vs Parallel Ultimate Wiring Guide in 2024](#)

For example, connecting two 12V batteries in series produces 24V with the same capacity (amp-hour rating) as a single 12V battery. This ...

[Email Contact](#)





### [Connecting batteries in parallel - BatteryGuy Knowledge Base](#)

There are two ways to wire batteries together, parallel and series. The illustration below show how these wiring variations can produce different voltage and amp hour outputs. ...

[Email Contact](#)



### [Batteries and Chargers Connected in Series and Parallel](#)

Learn how to connect batteries in series and parallel for different voltage and amp-hour capacities. Battery Tender® offers detailed instructions and ...

[Email Contact](#)

### [Battery Series vs Parallel Explained](#)

Series connections add voltages while keeping capacity (Ah) the same - two 12V 100Ah batteries in series become 24V 100Ah. Parallel connections maintain voltage but add ...

[Email Contact](#)



### [All Things You Need to Know about Lithium Battery Series, ...](#)

Do not let lithium batteries with different voltages in series. Due to the problem of consistency of lithium batteries, they are grouped in series under the same system (such as ternary or lithium ...

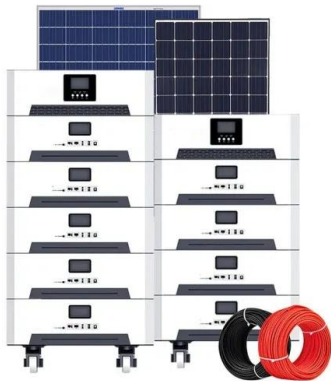
[Email Contact](#)



## [12V Lithium Ion Battery Guide, 12V Li Ion Battery Pack](#)

A 12V lithium battery pack is a lithium battery pack consisting of three or four lithium batteries in series and several lithium batteries in parallel, so the capacity of a 12V lithium battery can be ...

[Email Contact](#)



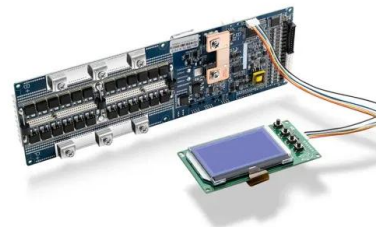
## [How To Connect Batteries In Series and Parallel](#)

To connect batteries in a series, a jumper wire connects a battery's negative terminal to another battery's positive terminal. This leaves ...

[Email Contact](#)

## [Can batteries of same voltage but different capacities ...](#)

When imbalanced batteries are connected in parallel, the voltages of the batteries should match, but the capacities can be different. When lithium ...



[Email Contact](#)



## [Batteries and Chargers Connected in Series and Parallel](#)

There are many ways to connect a group of batteries in both series and parallel at the same time. This is common practice in many battery power appliances, particularly in electric vehicles and ...

[Email Contact](#)



### [How to Charge Batteries in Series: A Comprehensive ...](#)

This series configuration increases the voltage of the battery pack to 24V, while maintaining the same overall current capacity as a single 12V battery. This is a ...

[Email Contact](#)



### [How to Wire 12V Batteries in Series & Parallel \(w/ ...](#)

Wiring batteries in series sums their voltages and keeps their amp hours the same. It's particularly useful for wiring two 6V lead acid batteries, or ...

[Email Contact](#)

### [Helpful Guide to Lithium Batteries in Parallel and Series](#)

Part 1. What are lithium batteries in parallel and series? The voltage and capacity of a single lithium battery cell are limited. In actual use, ...

[Email Contact](#)



### [Does Battery Capacity Add In Series](#)

9 hours ago· This 12V 100Ah lithium iron phosphate (LiFePO4) battery excels in series connections for RVs or off-grid systems. Its built-in battery management system (BMS) ...

[Email Contact](#)





### [Lithium battery pack series and parallel connection diagram](#)

I have a UPS with 96V battery packs (8 x 12V batteries in series). I'd like to use this as an off-grid power source charged from solar panels. I have a number of 100W 12V panels. Can I attach a ...

[Email Contact](#)



### [Can You Run LiFePO4 Batteries in Parallel?](#)

Connecting lithium batteries in parallel can provide longer battery life as the voltage remains the same while the capacity increases. Connecting ...

[Email Contact](#)

### [How To Connect Batteries In Series and Parallel](#)

To connect batteries in a series, a jumper wire connects a battery's negative terminal to another battery's positive terminal. This leaves you with a positive terminal at the ...

[Email Contact](#)



### [Batteries in Series vs Parallel: Which is Better?](#)

If you connect two 12v 50ah batteries in parallel, it will still be a 12 volt system, but the amps will double to 100ah, so the batteries will last longer. On the other hand, when you connect ...

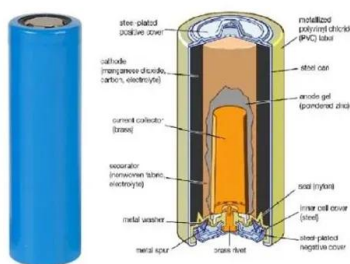
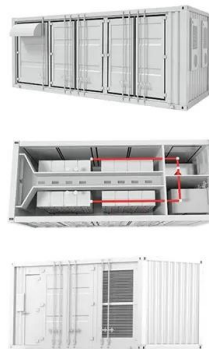
[Email Contact](#)



### Can You Link Battery Packs? Understanding Series Vs. Parallel

Yes, you can link battery packs together. However, it is important to consider how you connect them to avoid potential issues. Connecting battery packs in series increases the ...

[Email Contact](#)



### How to Charge Batteries in Parallel? Is it safe?

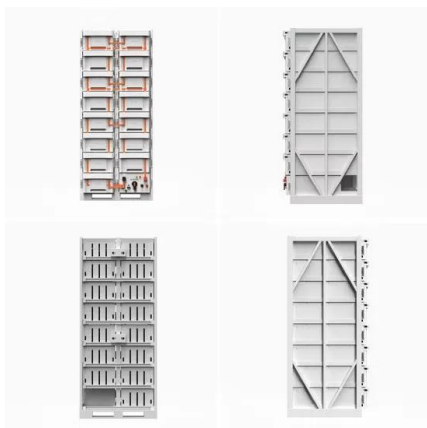
Use Identical Batteries: Same brand, model, age, and capacity. Even a 10% capacity mismatch can reduce efficiency by 30%. Install Fuses or ...

[Email Contact](#)

### How to Wire 12V Batteries in Series & Parallel (w/ Photos!)

Wiring batteries in series sums their voltages and keeps their amp hours the same. It's particularly useful for wiring two 6V lead acid batteries, or four 3.2V lithium cells, to make a ...

[Email Contact](#)



### Does Battery Capacity Add In Series

No, battery capacity does not add in series. Connecting batteries in series increases voltage, not capacity. This is a fundamental concept in battery configurations that ...

[Email Contact](#)



## Contact Us

---

For catalog requests, pricing, or partnerships, please visit:  
<https://www.ogrzewanie-jelenia.pl>