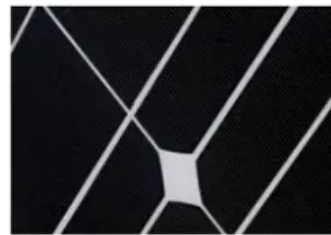
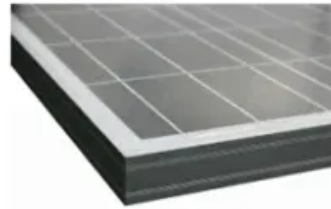


405 PV panel dimensions





Overview

67.8" x 44.65" x 1.18" 53.35 lbWhat is a 405 W solar panel?

Most of the 405 w solar panels are 72 and 144-cell modules. 144-cell panels are usually based on half-cell technology. It decreases the losses from partial shading, further adding to the energy output of a panel. Overall, it is a highly productive module which can work at more than 20% efficiency.

What are the different sizes of solar panels?

There are 3 standardized sizes of solar panels, namely: 60-cell solar panels size. The dimensions of 60-cell solar panels are as follows: 66 inches long, and 39 inches wide. That's basically a 66×39 solar panel. But what is the wattage?

That is unfortunately not listed at all. 72-cell solar panel size.

What is Q Cells Q Antum duo 405 solar panel?

Q CELLS Q.ANTUM DUO combines cutting edge cell separation and innovative wiring with Q.ANTUM Technology in Q.PEAK solar panels. Low wholesale price on the latest Q CELLS Q.PEAK DUO 405 solar panel w/ 144 half-cut cells. Expert advice & complete systems. Authorized Q CELLS supplier.

How thick should solar panels be?

The only useful thing that we get from this is depth or height (panel thickness): Most solar panels are about 1.5 inches thick. Alright, let's have a look at the length and width of typical solar panels, with wattage (very important), and complete with area or square footage (useful when calculating how many solar panels you can fit on a roof):



405 PV panel dimensions



[405W Viridian Clearline High Performance All Black solar panel - ...](#)

405W Clearline PV High-Performance Monocrystalline Solar Panel The Clearline PV 405W Monocrystalline Solar Panel is designed for seamless roof integration with M10 roofing kits, ...

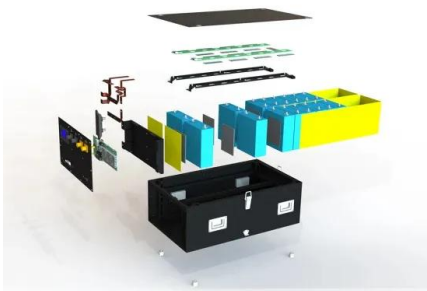
[Email Contact](#)

[Standard Solar Panel Sizes And Wattages \(100W ...](#)

You can find typical dimensions of 100W, 150W, 170W, 200W, 220W, 300W, 350W, 400W, and 500W solar panels summarized in the chart below. ...



[Email Contact](#)



[Q CELLS Q.PEAK DUO L-G7.2 405 405W Solar Panel](#)

The Q CELLS high-performance module Q.PEAK DUO L-G7.2 405 is the ideal solution for commercial and utility applications thanks to a combination of its innovative cell technology ...

[Email Contact](#)

[Talesun 405W Bifacial Solar Panel , Up to 500W Gain](#)

The Talesun 405W Bifacial Solar Panel combines cutting-edge technology with superior performance, making it an ideal choice for both residential and commercial installations.



[Email Contact](#)



[JA Solar JAM54-S31-405MR 405w Solar Panel .
Sun Supply PV](#)

JA Solar JAM54-S31-405MR 405 Watt Monocrystalline Solar Panel Founded in 2005, JA Solar has established itself as a leading manufacturer of high-performance photovoltaic products, ...

[Email Contact](#)

[Hyperion \(Runergy\) 405W Solar Panel 108 Cells
Bifacial HY-DH108P8B-405](#)

Engineers at Hyperion (Runergy) employ smaller gauge wires to link the cells together, creating a seamless appearance. 67.8" x 44.65" x 1.18" 53.35 lb.

[Email Contact](#)



[405W SunPower Solar panel SPR-P6-405-BLK
RES](#)

SunPower is the world's most patented solar technology manufacturer in the developing world and the industry standard for quality and performance. SunPower Performance SPR-P6-405 ...

[Email Contact](#)





[Standard Solar Panel Sizes And Wattages \(100W-500W Dimensions\)](#)

You can find typical dimensions of 100W, 150W, 170W, 200W, 220W, 300W, 350W, 400W, and 500W solar panels summarized in the chart below. But, just to emphasize the problem, ...

[Email Contact](#)



[JA Solar JAM54S30-405/MR 405W Solar Panel Module Black](#)

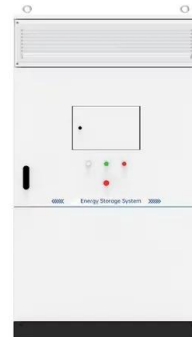
The JA Solar JAM54S30-405/MR is a 405W half-cell solar panel module from the DeepBlue 3.0 Light range. Tailored for commercial and residential rooftop solar systems, the solar modules ...

[Email Contact](#)

[Hyperion \(Runergy\) 405W Solar Panel 108 Cells Bifacial HY...](#)

Engineers at Hyperion (Runergy) employ smaller gauge wires to link the cells together, creating a seamless appearance. 67.8" x 44.65" x 1.18" 53.35 lb.

[Email Contact](#)



[Canadian_Solar-Datasheet-SuperPower_CS6K- MS_v5.551_EN](#)

CANADIAN SOLAR INC. is committed to providing high quality solar products, solar system solutions and services to customers around the world. No. 1 module supplier for quality and ...

[Email Contact](#)





[Talesun 405W Bifacial Solar Panel , Up to 500W Gain](#)

The Talesun 405W Bifacial Solar Panel combines cutting-edge technology with superior performance, making it an ideal choice for both residential and ...

[Email Contact](#)



[\[NEW\] Hyperion 405W Bifacial Solar Panel \(Black\) , Up to 510W ...](#)

Harness the power of solar energy with the Hyperion 405W Bifacial Solar Panel in sleek black from Direct Solar Power. Featuring cutting-edge bifacial technology, this solar panel captures ...

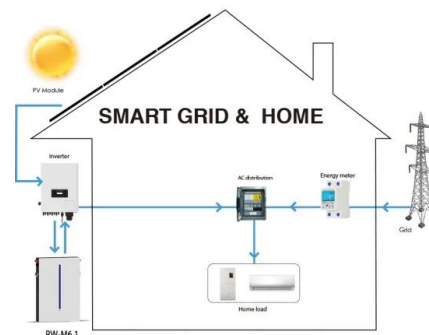
[Email Contact](#)



[LR5-54HIB-405M 405W Hi-Mo 5M All Black Solar ...](#)

Cable Length 1200mm Cable Type 4mm² Solar Colour Black Connection Socket MC4 Depth 30mm Dimensions (L)1722 mm x (W)1134 mm x (D)30 mm Frame ...

[Email Contact](#)



[405W Solar PV Panel, 108 Cells, Black, IP68](#)

Dimensions: 1724 x 1134 x 30mm Weight: 20.5kg Mono-crystalline 182mm (2 x 54 pcs) All black cell and frame design IP68 Connector: MC4 EVO2 STC Data: Pmax: 405Wp; Voc: 37.23V; ...

[Email Contact](#)





[ZNShine Solar 405W Solar Panel 108 Cell ZXM7](#)

...

The solar cells of ZXM7 SH108 are half the size of those found in standard panels. Major advantages include reduced power consumption,

...

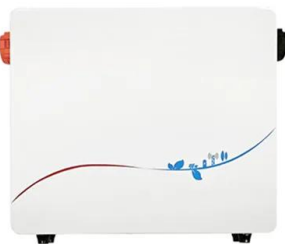
[Email Contact](#)



[JA Solar JAM54S30-405/MR 405W Solar Panel ...](#)

The JA Solar JAM54S30-405/MR is a 405W half-cell solar panel module from the DeepBlue 3.0 Light range. Tailored for commercial and residential rooftop ...

[Email Contact](#)



[Q CELLS Q.PEAK DUO L-G7.2 405 405W Solar Panel](#)

The Q CELLS high-performance module Q.PEAK DUO L-G7.2 405 is the ideal solution for commercial and utility applications thanks to a combination of its ...

[Email Contact](#)



[JA Solar JAM54S31-405/MR 405W Solar Panel All](#)

...

The JA Solar JAM54S31-405/MR is a 405W half-cell solar panel module with a stylish all-black design. Tailored for commercial and residential rooftop solar ...

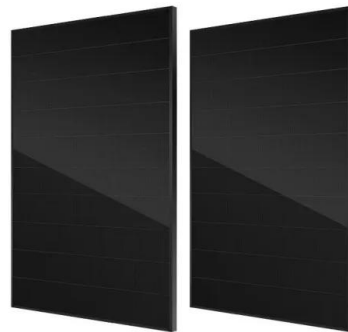
[Email Contact](#)



[\[NEW\] Hyperion 405W Bifacial Solar Panel \(Black\)](#)

Harness the power of solar energy with the Hyperion 405W Bifacial Solar Panel in sleek black from Direct Solar Power. Featuring cutting-edge bifacial ...

[Email Contact](#)



[405 Watt Solar panels for sale , Prices, dimensions, weight, ...](#)

Region: China Features: Anti-Crack / Black on Black / High efficiency (high output) / Low PID / Monocrystalline / Severe Weather Resistant Panel Dimension: 2008x1002x35 mm Inventory: ...

[Email Contact](#)

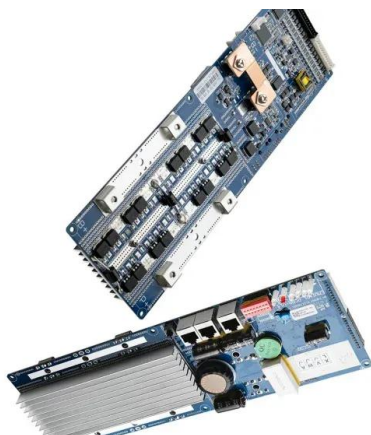
[Solar panel JA Solar 405W JAM54S30 405/MR](#)

The JA PV module 405W JAM54S30 405/MR solar panel is a high-efficiency photovoltaic module that combines innovative technology and elegant design. This panel is designed for optimal ...

[Email Contact](#)



**2MW / 5MWh
Customizable**



[HYPERION HY-DH108P8-405-B Modules Bifacial ...](#)

If you have the financial resources and require a high-performance, future-proof solar panel system for large residential or commercial applications, the ...

[Email Contact](#)



Canadian_Solar-Datasheet

CANADIAN SOLAR INC. is committed to providing high quality solar products, solar system solutions and services to cus-tomers around the world. No. 1 module supplier for quality and ...

[Email Contact](#)



Contact Us

For catalog requests, pricing, or partnerships, please visit:
<https://www.ogrzewanie-jelenia.pl>