

5G base station 1kW wind power supply





Overview

What is a 5G power supply?

The equipment ensures that devices across the infrastructure stack receive reliable power from the mains network, wherever they happen to reside. With it, individuals and organizations can continue to render services to both themselves and their customers. Overview The 5G network architecture uses multiple types of power supplies.

What are 5G infrastructure power supply considerations?

While the overall power draw is often lower, 5G equipment has narrower tolerances. It often needs multiple, precise voltages to operate correctly, with scarce leeway on either side. In the following section, we discuss 5G infrastructure power supply considerations in more detail. 5G delivers coverage to an area in a different way from 4G.

What is a 5G backhaul power supply?

The backhaul part of the 5G network connects the access interface - including masts, eNodeB, and cell site gateway - to the mobile core and internet beyond. And just like the access equipment, it too has specific power supply requirements. Backhaul power supplies must cater to aggregation routers and core routers.

What is the access side of the 5G stack?

The access side of the 5G stack includes user equipment such as smartphones, tablets, laptops, and desktop devices. Devices in this part of the stack require power supply equipment that can operate at room temperatures indoors and protect sensitive electronics - already a well-developed area.

Do 5G equipment power supply units need to be compact?

Small cells will need to be able to fit in compact environments, such as traffic lights, utility poles, and rooftops. So power supply units will need to be



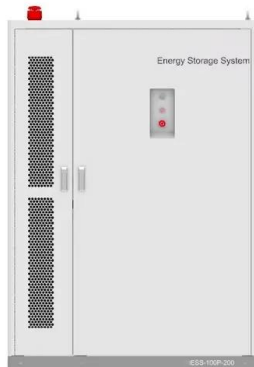
compact, able to fit comfortably alongside the equipment they power. There are also considerable heat dissipation issues that 5G equipment power supply units will need to accommodate.

Do 5G small cells need a power supply?

Experts widely believe that 5G small cells need to be able to continue running in the event of electrical anomalies. Pairing them with integrated power supply devices costs more, but it also protects small cells if there are dramatic changes in voltage.



5G base station 1kW wind power supply



[Shanxi Luya Mountain scenic spot 5G base station ...](#)

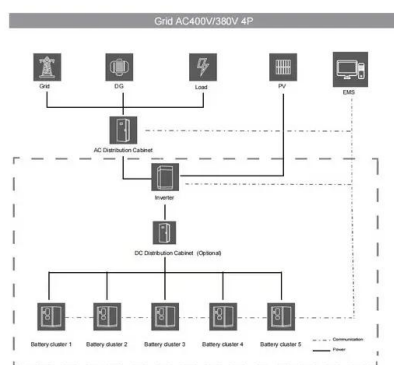
Shanxi Luya Mountain scenic spot 5G base station hybrid solar wind power system. This system will not only provide a stable power supply ...

[Email Contact](#)

[Mobile base station site as a virtual power plant for grid stability](#)

Furthermore, it seeks to determine if the full activation time can meet the requirements of an FFR product. The system consists of a live mobile base station site with a ...

[Email Contact](#)



[Infineon Technologies REF_1KW_PSU_5G_SIC PSU Reference ...](#)

This is a complete system solution for a 1000W Power Supply Unit (PSU) targeting the new 5G specifications for outdoor small-cell telecom rectifiers and Edge computing.

[Email Contact](#)

[Multi-objective interval planning for 5G base station virtual ...](#)

As an emerging load, 5G base stations belong to typical distributed resources [7]. The in-depth development of flexi-bility resources for 5G base stations, including their internal energy ...



[Email Contact](#)



Applications



[Renewable Energy Sources for Power Supply of Base ...](#)

It is shown that powering base station sites with such renewable energy sources can significantly reduce energy costs and improve the energy ...

[Email Contact](#)

[Selecting the Right Supplies for Powering 5G Base Stations](#)

These tools simplify the task of selecting the right power management solutions for these devices and, thereby, provide an optimal power solution for 5G base stations components.

[Email Contact](#)



[1000 W telecom power supply for 5G edge computing and ...](#)

This document is intended for design engineers who use the REF_1KW_PSU_5G_GaN reference board for developing the 1000 W PSU for 5G outdoor small-cell telecom rectifiers. Product(s) ...

[Email Contact](#)





Power Supply Solutions for Wireless Base Stations Applications

Luckily, MORNSUN has a series of power solutions designed to provide state-of-the-art reliability while also curbing any unnecessary costs related to their installation, application, and ...

[Email Contact](#)



Home Energy Storage (Stackble system)



Product Introduction	
<ul style="list-style-type: none"> Scalable from 10kWh to 50kWh Self Consumption Optimization Integrated with inverter to avoid the compatibility problem 	<ul style="list-style-type: none"> LFP battery, safest and long cycle life Stackable design, off-the-shelf installation Capable of High-Powered Emergency Backup and Off-Grid Function

5g base station power supply solution

Under the impact of these problems, 5g base station power supply with maintenance free, high reliability, diverse installation methods and high IP protection level is one of the best solutions ...

[Email Contact](#)

Infineon Technologies REF_1KW_PSU_5G_SIC PSU

This is a complete system solution for a 1000W Power Supply Unit (PSU) targeting the new 5G specifications for outdoor small-cell telecom ...

[Email Contact](#)



5G Micro Base Station Lithium Battery Backup

This 5G Micro Base Station Power Supply offers dependable lithium battery backup in a compact, high-efficiency format. Built with LiFePO4 chemistry, it delivers long-lasting power for critical ...

[Email Contact](#)



[Power Supplies for Outdoor 5G Base Station Application](#)

As shown in Figure 3, small base stations require power supplies just like the rest of electronic devices, and because they are normally installed in outdoor environments, it is ...

[Email Contact](#)



[The power supply design considerations for 5G base stations](#)

To understand how, consider the power amplifier (PA) and power supply unit (PSU) in the 5G New Radio (NR) gNodeB base station. In 2G, 3G and 4G, the PA and PSU were ...

[Email Contact](#)



[Energy Consumption of 5G. Wireless Systems and ...](#)

Reports on the Increasing Energy Consumption of Wireless Systems and Digital Ecosystem The more we use wireless electronic devices, the more energy we ...

[Email Contact](#)



[Two-Stage Robust Optimization of 5G Base Stations Considering](#)

However, the uncertainty of distributed renewable energy and communication loads poses challenges to the safe operation of 5G base stations and the power grid. ...

[Email Contact](#)





[Power Supplies for Outdoor 5G Base Station Application](#)

As shown in Figure 3, small base stations require power supplies just like the rest of electronic devices, and because they are normally installed ...

[Email Contact](#)



[5G Transmit Power and Antenna radiation](#)

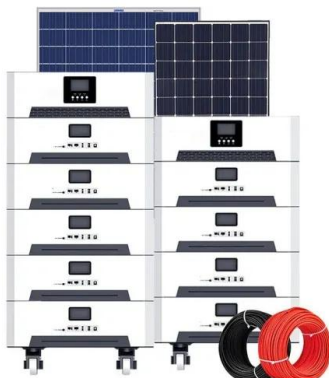
5G NR Transmit Power The RF output power is strongly depending on the available bandwidth and on the target data rate. Output power is typically ...

[Email Contact](#)

[Synergetic renewable generation allocation and 5G base station](#)

The growing penetration of 5G base stations (5G BSs) is posing a severe challenge to efficient and sustainable operation of power distribution systems (PDS) due to their huge ...

[Email Contact](#)



[12 V / 1 kW fan-less PSU for outdoor 5G & edge computing](#)

- Fixed Wireless Access: base stations used to provide wireless broadband connectivity between two fixed points, for example a mobile network cell tower and a FWA device in a customer's ...

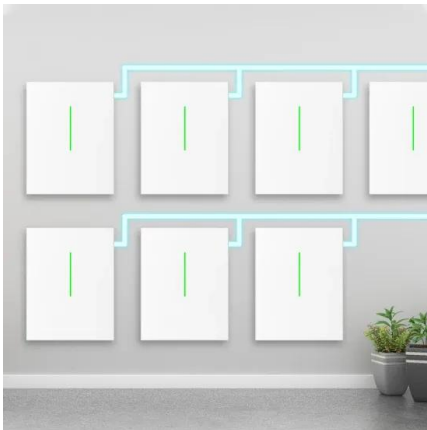
[Email Contact](#)



[The power supply design considerations for 5G base ...](#)

To understand how, consider the power amplifier (PA) and power supply unit (PSU) in the 5G New Radio (NR) gNodeB base station. In 2G, 3G ...

[Email Contact](#)



[5G infrastructure power supply design considerations \(Part I\)](#)

Discover the factors that telecoms organizations need to consider for 5G infrastructure power design in the network periphery.

[Email Contact](#)

[The Long Road to Sobriety: Estimating the Operational...](#)

Therefore, in this paper, we estimate the operational power consumption of cellular Base Stations (BSs) deployed in France from 2015 to 2022. However, unfortunately, the lack of openly ...

[Email Contact](#)



[Strategy of 5G Base Station Energy Storage Participating in the Power](#)

The proportion of traditional frequency regulation units decreases as renewable energy increases, posing new challenges to the frequency stability of the power system. The ...

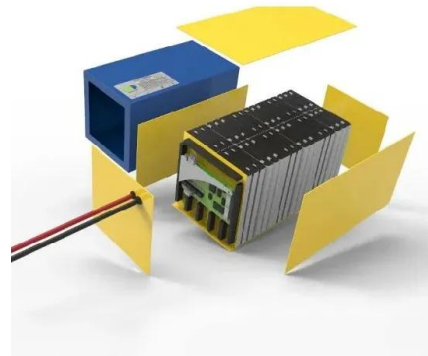
[Email Contact](#)



[Dispatching strategy of base station backup power supply ...](#)

Abstract: With the mass construction of 5G base stations, the backup batteries of base stations remain idle for most of the time. It is necessary to explore these massive 5G base station ...

[Email Contact](#)



[Selecting the Right Supplies for Powering 5G Base Stations](#)

These tools simplify the task of selecting the right power management solutions for these devices and, thereby, provide an optimal power solution for 5G base stations components.

[Email Contact](#)



[Power Supply for 5G Infrastructure , Renesas](#)

Renesas' 5G power supply system addresses these needs and is compatible with the -48V Telecom standard, providing optimal performance, reduced energy consumption, and robust ...

[Email Contact](#)



[5G Base Station Backup Power Supply in Emerging Markets: ...](#)

The global 5G base station backup power supply market is experiencing robust growth, driven by the rapid expansion of 5G networks worldwide. The increasing demand for ...

[Email Contact](#)





[5G network deployment and the associated energy consumption ...](#)

The simulation results show that 700 MHz and 26 GHz will play an important role in 5G deployment in the UK, which allow base stations to meet short-term and long-term data ...

[Email Contact](#)



Contact Us

For catalog requests, pricing, or partnerships, please visit:
<https://www.ogrzewanie-jelenia.pl>