

Base station outdoor battery fixing





Overview

Why is my Wyze Cam Outdoor backup battery not charging?

If your Wyze Cam Outdoor's backup battery isn't charging, start by checking the Base Station. Ensure it's plugged into a working outlet and turned on, as the Base Station is responsible for charging the camera's battery.

What type of battery does a base station use?

The base station uses a NiMh battery pack to maintain operation during short term power loss. Only replace this pack with the same Telensa type replacement battery pack. The base station unit described in this guide emits radio frequency energy through its antenna.

How can I charge my Wyze camera through the Base Station?

To charge your Wyze camera through the Wyze Base Station, make sure that the Base Station is plugged into power and turned on. If the Base Station is not charging the camera, check that your charging cable is not faulty and that the charging port on the camera is not faulty.

How do I reconnect my outdoor sensor to the base station?

There are steps below that will assist you in getting the sensor to reconnect with the base station and in most instances will rectify the issue without any further steps needed. 1. Bring the outdoor sensor in from outdoors and place it approximately 1-3 metres away from the base station.

How can I reduce battery drain on my Wyze Outdoor Cam?

To reduce battery drain on your Wyze Outdoor Cam, try to use events such as Live Stream only as needed. If your camera has too many events, it could cause the battery to drain quickly. Also, check the position of your camera and reposition it if necessary.

How do I remove the outdoor sensor from the base station?



1. Bring the outdoor sensor in from outdoors and place it approximately 1-3 metres away from the base station. 2. Remove all batteries (this includes the outdoor sensor/sensors and the base station) and allow all items to completely drain for approximately 20 minutes.



Base station outdoor battery fixing



[Wyze Base Station and Outdoor Cam V1 Problems](#)

To rectify this, you need to reset the Wyze Base Station and set it up like a new device. To reset it, delete it first from the Wyze app and you also ...

[Email Contact](#)

Common issues with Weather Stations and how to fix them!

There are steps below that will assist you in getting the sensor to reconnect with the base station and in most instances will rectify the issue without any further steps needed.

[Email Contact](#)



[Installation and hardware , Base Help Center](#)

How do I connect my battery to my home WiFi network? This article will help you connect your battery to your WiFi. It will also help you troubleshoot internet connectivity issues.

[Email Contact](#)



Outdoor Cam battery won't charge and base station won't connect

I'm totally frustrated with my 1 year old Outdoor Cam and base station. The battery on the camera refuses to charge. I've tried every suggestion, fix I can find and still it won't ...



[Email Contact](#)



Fix Wyze Base Station Not Connecting - Complete ...

If you're struggling with a Wyze Base Station that won't connect, you're not alone--and you're in the right place. In this in-depth guide, we'll explore multiple solutions to ...

[Email Contact](#)

CN220138582U

The utility model discloses a communication base station storage battery fixing device, which relates to the technical field of communication base station storage battery fixing devices, and ...

[Email Contact](#)



[How to reset Wyze cam outdoor hub/basestation?](#)

My Wyze Cam outdoor camera stopped working. It appears that the outdoor cam hub/basestation has gone catatonic. I have power cycled it, tried different ethernet cables, ...

[Email Contact](#)





[Troubleshoot Wyze Cam Outdoor battery life issues](#)

Having issues with your Wyze Cam Outdoor's battery life? If you're experiencing poor performance, or needing to charge our device often, try the tips in this article. Problem ...

[Email Contact](#)



[Installation Manual for the BS4 Basestation](#)

The base station uses a NiMh battery pack to maintain operation during short term power loss. Only replace this pack with the same Telensa type replacement battery pack.

[Email Contact](#)



[Wyze Cam Outdoor Connectivity Troubleshooting](#)

Problem Wyze Cam Outdoor v1/v2 fails to connect to the base station, or is frequently losing connection. Troubleshooting Steps Reboot your Wyze Base Station to re ...

[Email Contact](#)



Wyze Outdoor Camera Not Charging? (Troubleshooting Tips)

If you're having trouble charging your Wyze Cam Outdoor or Wyze Cam v3, this post is your go-to resource. In the following paragraphs, we will walk you through some ...

[Email Contact](#)





Wyze Outdoor Camera Not Charging? (Troubleshooting Tips)

If you're struggling with a Wyze Base Station that won't connect, you're not alone--and you're in the right place. In this in-depth guide, we'll ...

[Email Contact](#)



Had power outages

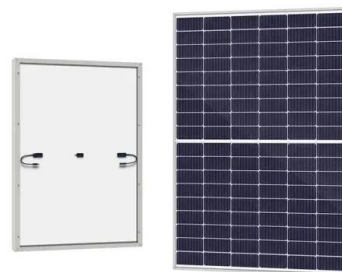
It is fairly simple, extract to SD card, insert card into base station and reboot base station. I was a little worried that it wouldn't work but for me, so far it has.

[Email Contact](#)

[Wyze Base Station and Outdoor Cam V1 Problems.](#)

To rectify this, you need to reset the Wyze Base Station and set it up like a new device. To reset it, delete it first from the Wyze app and you also need to delete all the ...

[Email Contact](#)



[La Crosse Weather Station Troubleshooting: Fix ...](#)

Effortlessly troubleshoot La Crosse Weather Station issues for accurate forecasts. Optimize performance with expert troubleshooting tips.

[Email Contact](#)



[Oregon Scientific Weather Station Troubleshooting](#)

What is the Oregon Scientific Weather Station?
Oregon Scientific Weather Station is a home weather station that includes a base unit and one ...

[Email Contact](#)



Fixing Connection Issues with Raddy Weather Station

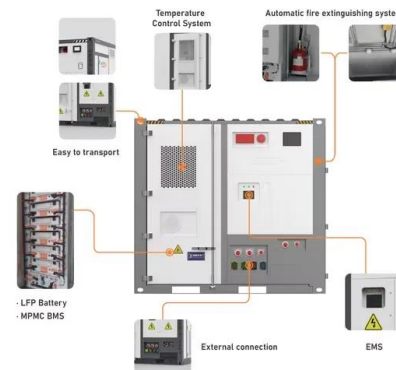
After reinserting the batteries, press and hold the reset button on the base station for a full 10 seconds--sometimes a quick press isn't enough to trigger the reset process. Next, check if the ...

[Email Contact](#)

[Wyze Cam Outdoor Troubleshooting](#)

Wyze Cam Outdoor Siren Troubleshooting I can't enable Travel Mode. What do I do? Wyze Cam Outdoor Setup Troubleshooting Wyze Cam Outdoor Connectivity Troubleshooting Base ...

[Email Contact](#)



[Setting Up Your Ring Alarm Base Station](#)

How does battery backup work? When your Ring Alarm loses power, the internal rechargeable battery will keep your Ring Alarm Base Station online for up to 24 hours. You may have some ...

[Email Contact](#)



[AcuRite Weather Station Not Connecting?](#)

If your AcuRite weather station not connecting we have the best solution! In this guide, we'll go through all possible ways to troubleshoot your ...

[Email Contact](#)



[Valve Index Base Station Repair](#)

The Valve Index Base Station is a device used to track the position of virtual reality headsets and controllers. It uses infrared technology to accurately track the location of VR equipment in a ...

[Email Contact](#)

Base batteries not charging , SimpliSafe Support Home

If it detects an issue, you'll get the warning "Battery Failure - Base Station Batteries are not charging". To resolve the issue, you'll want to access the battery compartment to ...

[Email Contact](#)



Contact Us

For catalog requests, pricing, or partnerships, please visit:
<https://www.ogrzewanie-jelenia.pl>