

# **Battery BMS installation**





## Overview

---

How do you install a BMS battery?

Here's a general step-by-step guide: Step 1: Gather materials Gather the necessary tools and materials, including the BMS unit, wiring harnesses, connectors, and insulation materials. Step 2: Prepare battery packs Prepare the battery pack by ensuring proper cell arrangement and spacing.

What is a battery management system (BMS)?

A BMS makes a lithium-ion battery safer by preventing the cells from ending up in situations that cause them to rapidly increase in temperature. A BMS also protects the health of your battery cells and extends the overall life of your battery by making sure the cells don't get over-discharged. Attaching a BMS to a battery is fairly straightforward.

How do I install a BMS unit?

Step 1: Gather materials Gather the necessary tools and materials, including the BMS unit, wiring harnesses, connectors, and insulation materials. Step 2: Prepare battery packs Prepare the battery pack by ensuring proper cell arrangement and spacing. Step 3: BMS Wiring (This part will be explained in detail in the next section).

How do I install a smart BMS?

Disconnect the cabling from the minus pole of the starter battery. Pull off the remote on/off connector to prevent unwanted switching of the Smart BMS. Install and connect fuses and all electrical wiring, leaving the negative poles of the lithium batteries and the starter battery disconnected.

What is a BMS in a lithium ion battery?

The BMS is a critical component of any lithium battery. Learning how to attach a BMS to a battery is a critical step in building lithium-ion batteries. A BMS makes a lithium-ion battery safer by preventing the cells from ending up in



situations that cause them to rapidly increase in temperature.

How do I wire a BMS module?

The BMS module has several connectors that need to be wired properly. These include the P- connector, which connects to the negative terminal of the battery pack, and the P+ connector, which connects to the positive terminal. There are also individual connectors for each cell, labeled from C1 to C13.



## Battery BMS installation

---

114KWh ESS



### Installation Manual

2.6 BMS: Battery Management System, is a collection of electronic devices used to monitor, evaluate, and protect battery operating parameters. It consists of BMU, BCU, Control box, ...

[Email Contact](#)



### Yamaha Introduces All-new Battery Management System ...

more room in the boat and a cleaner bilge, while making battery care and management significantly easier for the customer. BMS also reduces battery system installation costs, ...

### Can You Add an External BMS to Lithium Batteries? A ...

In this guide, we'll explore whether you can add an external BMS to your lithium battery, how it works, and why it might be a game-changer for ...

[Email Contact](#)



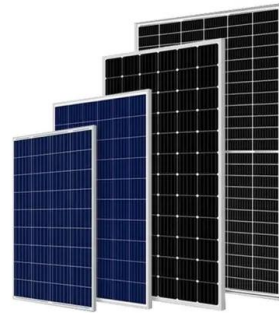
### [How to Assemble a Battery Pack with a BMS Module](#)

Learn how to safely assemble a battery pack with a BMS module. Our step-by-step guide covers materials needed, safety precautions, detailed ...

[Email Contact](#)



[Email Contact](#)



### [Battery Management Systems \(BMS\) for Solar Storage](#)

Battery Management Systems (BMS) are vital components for solar storage, streamlining the charge and discharge of the solar battery bank while monitoring important parameters like ...

[Email Contact](#)



### [Understanding the 8s BMS Wiring Diagram: A ...](#)

Learn how to wire an 8s BMS using a detailed wiring diagram. Understand the connections and sequence of wiring for an 8s battery management system. ...

[Email Contact](#)



### [How to Connect a BMS to Your Battery Pack](#)

Learn how to connect a BMS to your battery pack with our step-by-step guide. Ensure safety, efficiency, and longevity for your lithium-ion batteries.

[Email Contact](#)

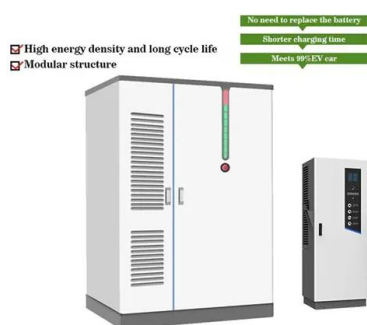




## Understanding the 8s BMS Wiring Diagram: A Comprehensive ...

In this article, we will provide you with a comprehensive guide on the 8s BMS wiring diagram. We will break down each component's function and explain how they are connected, helping you ...

[Email Contact](#)



### [3. Installation and configuration](#)

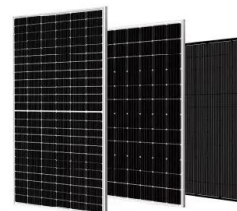
The input voltage (= battery voltage) has fallen below a preset value (adjustable in BatteryProtect) or when the remote on/off terminal is pulled low. The Smart BMS can be used to control the ...

[Email Contact](#)

### [3. Installation and wiring examples](#)

The image below shows a Smart BatteryProtect in a lithium battery system with external BMS. The external BMS (Victron Lynx Smart BMS in this example) has an ATD (allowed to ...

[Email Contact](#)



## How to Assemble a Battery Pack with a BMS Module , Step-by ...

Learn how to safely assemble a battery pack with a BMS module. Our step-by-step guide covers materials needed, safety precautions, detailed assembly instructions, and testing ...

[Email Contact](#)



## Installer's Guide

The Advanced Series BMS includes an integrated SOC Gauge, designed to track battery state of charge (percent of usable energy left in the battery) as well as other useful data parameters.

[Email Contact](#)



## [3. Installation and configuration](#)

Battery chargers must interrupt the charging process in case of imminent overvoltage or overtemperature of the cells. The Charge disconnect output of the Smart BMS can be used for ...

[Email Contact](#)

## [How Do You Properly Wire a Lithium Battery BMS?](#)

To properly wire a lithium battery BMS, first connect the battery pack's main negative to the B- terminal on the BMS. Then link the balance wires sequentially to each cell's ...

[Email Contact](#)



 **LFP 12V 100Ah**

## **How To Install a Battery Monitoring System - Tips, Tools, and ...**

1 day ago · A battery monitoring system is an important device designed to monitor battery conditions in real time, including voltage, current, temperature, and capacity. This article will ...

[Email Contact](#)



## [How To Hook up and Install A BMS To Battery](#)

Learning how to attach a BMS to a battery is a critical step in building lithium-ion batteries. A BMS makes a lithium-ion battery safer by preventing the cells from ending up in ...

[Email Contact](#)



## **Software to access Growatt gbli6532 BMS for updating firmware**

This appears to be a Poweramp/Ampace battery manufactured for Growatt and Sunpower to name two. Though I believe the BMS is spitting out different canbus data via the ...

[Email Contact](#)

## **BMS Connection: How to add smart BMS to lithium batteries?**

It's important to mention that the BMS connection and installation procedure might differ based on the particular smart BMS model and the intricacy of your battery assembly. It's ...

[Email Contact](#)



## [Understanding the 8s BMS Wiring Diagram: A ...](#)

In this article, we will provide you with a comprehensive guide on the 8s BMS wiring diagram. We will break down each component's function and explain ...

[Email Contact](#)





## Wiring Diagram for 48v 13s BMS

Understanding the wiring diagram of a 48v 13s BMS is crucial for proper installation and maintenance of your battery system. The diagram illustrates the correct connection of each ...

[Email Contact](#)



 LFP 280Ah C&I

## [SmartBatteryManagementSystemwith ActiveBalance](#)

Overview The BMS for lithium battery is a management system tailored for large-capacity series-connected lithium battery packs. It has functions such as voltage acquisition, high current ...

[Email Contact](#)



## Can You Add an External BMS to Lithium Batteries? A Complete ...

In this guide, we'll explore whether you can add an external BMS to your lithium battery, how it works, and why it might be a game-changer for your energy system.

[Email Contact](#)



## Contact Us

For catalog requests, pricing, or partnerships, please visit:  
<https://www.ogrzewanie-jelenia.pl>