

Can a 60v lithium battery be converted to 12v using an inverter





Overview

What voltage should a 12V inverter run on?

The input voltage of the inverter should match the battery voltage. (For example 12v battery for 12v inverter, 24v battery for 24v inverter and 48v battery for 48v inverter Summary What Will An Inverter Run & For How Long?

.

How to choose a lithium battery inverter?

Exceeding this limit can damage the battery. Operating Voltage: The inverter's operating voltage range should be compatible with the nominal voltage of your lithium battery bank (e.g., 12V, 24V, 48V). Ideal Power Consumption: Look for an inverter with an efficiency rating that suits your needs.

Can a 12 volt converter charge a lithium battery?

They keep the entire 12 volt system running and batteries charged. While an old converter will do its best to charge a lithium battery, it's recommended to upgrade to a new converter that supports lithium. That ensures the battery will be taken care of in the right way.

What are the disadvantages of a 12 volt inverter?

The disadvantage is that the 12 V inverter will draw 5 times the current a 60 V inverter draws for the same output power. This current needs to be supplied by the step-down converter. This will also incur additional losses in the step-down converter. I'd swap the 12 V inverter for a 60 V inverter. I had a hunch. I'll make the swap.

What are the specifications of a lithium battery inverter?

Inverter Specifications: Charging Current: The inverter's charging current must match your lithium battery's recommended charging current. Exceeding this



limit can damage the battery. Operating Voltage: The inverter's operating voltage range should be compatible with the nominal voltage of your lithium battery bank (e.g., 12V, 24V, 48V).

Can a solar inverter be used with a lithium battery?

Integrating a solar inverter with a lithium battery can take your renewable energy setup to the next level. This combination allows for better energy storage, improved efficiency, and greater resilience during power outages. LiFePO4 batteries are particularly well-suited for solar applications because their thermal stability and long cycle life.



Can a 60v lithium battery be converted to 12v using an inverter



12v or 60v Inverter. Does it Matter? , Electronics Forums

The disadvantage is that the 12 V inverter will draw 5 times the current a 60 V inverter draws for the same output power. This current needs to be supplied by the step-down ...

[Email Contact](#)

I Tested the Dewalt 20V Power Inverter: Here's Why It's a Must ...

I never thought I would need a power inverter until I found myself stranded on the side of the road with a dead car battery and no way to charge my phone. That's when I discovered the Dewalt ...

[Email Contact](#)



Can I charge my power station, via its DC input, from a LiFePO4 battery

I have a Bluetti AC180 and use the DC input (DC7909 solar port) to 'extend'/charge the power station from a 12V LiFePO4. As 12V LiFePO4s nominal voltage is 12.8VDC it doesn't charge ...

[Email Contact](#)

Dewalt Battery Compatibility Chart (Cross) - All Voltages

DeWalt has been launching the batteries frequently to cope with the new trends and modern tool requirements. From the diversified range of ...



[Email Contact](#)



What Size Inverter Can I Run Off a 100Ah Lithium Battery?

When using a 100Ah lithium battery, the size of the inverter you can run typically depends on the battery's capacity and the power requirements of your devices. Generally, you ...

[Email Contact](#)

Understanding the Basics of Connecting Lithium ...

Ensure that the battery's voltage is within the range that the inverter supports. Most inverters are designed for 12V, 24V, or 48V systems, so the ...

[Email Contact](#)



[Do I need a special inverter for Lithium battery?](#)

You don't necessarily need a special inverter for a lithium battery, but compatibility is critical. Here are the important points to consider when deciding the correct answer. The ...

[Email Contact](#)





12 Volt DC Power Inverter: In-Depth Learning and ...

A 12-volt DC power inverter is an essential device for converting 12V direct current (DC) from a battery into 120V alternating current (AC), ...

[Email Contact](#)



Using boost converter for charging LiFePO4 from ...

If your alternator can output enough voltage to charge your LiFePO4, then you may not need a dc to dc converter. But you will need an ...

[Email Contact](#)

Compatibility of Lithium-Ion Batteries with Existing Inverters

This blog post will walk you through the essentials of lithium-ion batteries, their benefits, and the steps to seamlessly integrate them with your current inverter setup. From practical examples ...

[Email Contact](#)



Understanding the Basics of Connecting Lithium Batteries to ...

Lithium batteries are widely used in energy storage systems due to their high efficiency, long life cycle, and light weight. Connecting a lithium battery to an inverter is crucial ...

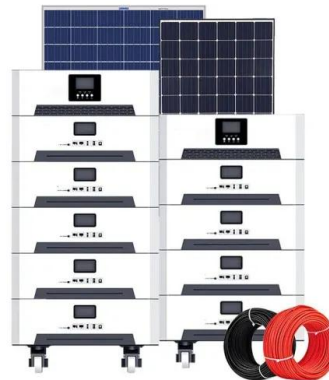
[Email Contact](#)



Efficient 60v to 12v DC-DC

I'm on the process of building a new version of my ebike electronic systems and I'm searching for a way to lower the voltage of the battery (13s = 54,6v fully charged) to 12v/5v for ...

[Email Contact](#)



Best RV Converter Replacements For Lithium RV Batteries

While an old converter will do its best to charge a lithium battery, it's recommended to upgrade to a new converter that supports lithium. That ensures the battery ...

[Email Contact](#)

12v or 60v Inverter. Does it Matter? , Electronics Forums

Hello! I'm in the middle of a build. It's a lithium battery pack (aka solar generator). The plans called for 60 volt 2500 watt DC>AC inverter. I accidentally bought a 12 volt. The ...

[Email Contact](#)



Using 5x 12volt batteries for 60V.. CC-OK Inverter-NOK

The FM80 is designed for battery voltages from 12V to 60V nominal. The inverter is designed for a DC battery voltage input of 40V - 64V. It would appear that range will operate ...

[Email Contact](#)



Calculate Battery Size For Any Size Inverter (Using Our Calculator)

So I have made it easy for you, use the calculator below to calculate the battery size for 200 watt, 300 watt, 500 watt, 1000 watt, 2000 watt, 3000 watt, 5000-watt inverter

[Email Contact](#)



Understanding the Basics of Connecting Lithium Batteries to ...

Ensure that the battery's voltage is within the range that the inverter supports. Most inverters are designed for 12V, 24V, or 48V systems, so the battery should match this ...

[Email Contact](#)



[Lithium \(LiFePO4\) Battery Runtime Calculator](#)

Note: Use our solar panel size calculator to find out what size solar panel you need to recharge your battery. Calculator assumption Lithium ...

[Email Contact](#)



Using boost converter for charging LiFePO4 from starter battery

If your alternator can output enough voltage to charge your LiFePO4, then you may not need a dc to dc converter. But you will need an isolator so the LiFePO4 battery ...

[Email Contact](#)





Understanding Battery Capacity and Inverter Compatibility

In this guide, we will delve into the practical aspects of converting amp-hours to watt-hours, calculating battery run times, and determining the right inverter size, among other ...

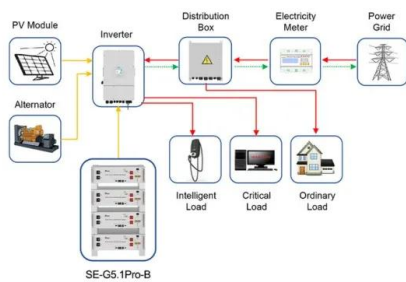
[Email Contact](#)



[Adapter Use for Craftsman 20V V20 Cordless ...](#)

?Product Advantages-Function--This adapter can make listed for Dewalt 20V 60V lithium battery and Milwaukee 18V M18 lithium batteries use ...

[Email Contact](#)



Application scenarios of energy storage battery products

Everything to Consider When Switching an RV to ...

Switching to lithium batteries is a common upgrade for RVers. But is it as simple as dropping in a new battery? No, and we tell you why.

[Email Contact](#)

FLEXIBLE SETTING OF MULTIPLE WORKING MODES



Turn Your DeWalt 20V Battery into a Small Power Station! We

Today we're looking at the Aoasur Power Inverter. It'll turn your DeWalt 20V Batteries into a mini Power Station & We're giving ours away to one lucky subscr

[Email Contact](#)

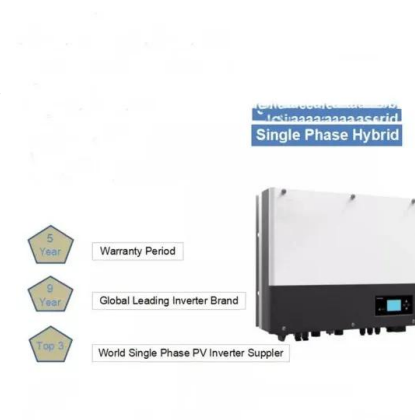




[Can i use a 12v instead of a 60v : r/ebikes](#)

A 12v battery has 4 cells to charge, a 60v battery has 20 cells to charge. The charge controller will be different which might account for some price difference.

[Email Contact](#)



114KWh ESS



How to Drive a 48V ebike electric motor using a 12V battery

This video shows how to drive 48V DC electric motor using a 12V battery and a constant current DC to DC boost converter. The DC motor used in this video is an 1800W, 33A, ebike motor ...

[Email Contact](#)

Contact Us

For catalog requests, pricing, or partnerships, please visit:
<https://www.ogrzewanie-jelenia.pl>