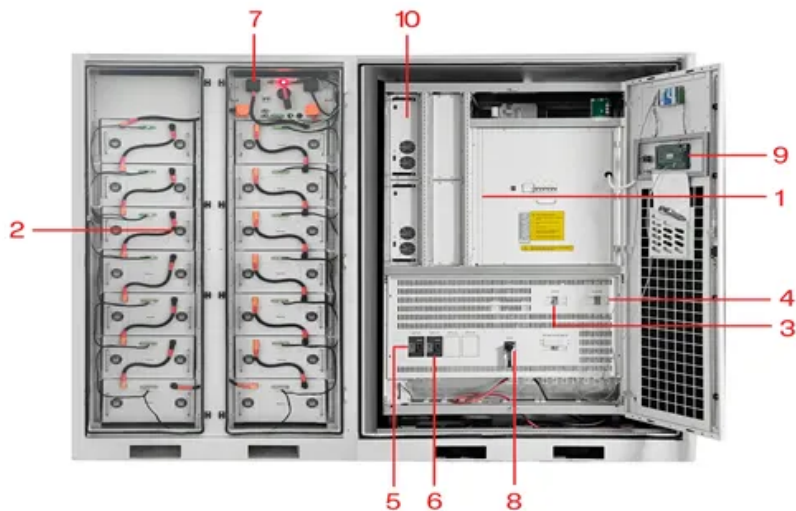


Can outdoor power supplies be used on public transportation



- | | |
|-----------------------------|-----------------------------|
| 1 PCS Module | 6 OPV2 side circuit breaker |
| 2 Battery room | 7 High Volt Box |
| 3 Grid side circuit breaker | 8 BAT side circuit breaker |
| 4 Load side circuit breaker | 9 LCD display screen |
| 5 OPV1 side circuit breaker | 10 MPPT |



Overview

All types of devices powered by fuel or combustion engines, for example, may be excluded from indoor settings for health or environmental reasons, but may be deemed acceptable in some outdoor settings.

Do external power supplies need to be certified?

Per 10 CFR 430.32 (w) (4), external power supplies must bear an obvious and permanent marking that complies with the International Efficiency Marking Protocol for External Power Supplies. 10 CFR Part 429 sets certification requirements for products covered by 10 CFR Part 430, which includes external power supplies.

Does dot require transportation providers to permit assistive devices?

Section 37.3 of Appendix D to 49 CFR Part 37 states that U.S. DOT “does not interpret its rules to require transportation providers to permit an assistive device to be used in a way that departs from or exceeds the intended purpose of the device.”.

Can a bus driver transport a mobility device?

Transit agencies may also have local policies about how best to respond when a rider is using a mobility device for carrying personal belongings, such as groceries. The question is whether the bus driver is required to transport the mobility device as if the person were riding in the device.

Do drivers have to provide assistance to use public transit?

The ADA requires that drivers provide assistance for riders to use public transit including boarding, deboarding, and using accessible features of the vehicle. The requirement to provide this assistance should be included as part of the driver job description. Drivers are expected to perform the duties and tasks of the job.

Does a transit agency need accessibility equipment or features?

As discussed in FTA ADA Circular 4710.1, it is not enough for a transit agency



to have the accessibility-related equipment or features. Staff must use the equipment or feature (such as deploying lifts and ramps) in order to provide accessible service to riders.

What are other power-driven mobility devices (opdmd)?

In recent years, some people with mobility disabilities have begun using less traditional mobility devices such as golf cars or Segways®. These devices are called “other power-driven mobility device” (OPDMD) in the rule.



Can outdoor power supplies be used on public transportation



[StoreyLake 9Bd Pooltable/Cinema/Games/Pool](#)

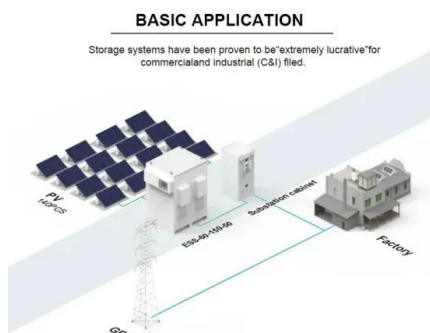
We welcome you to our beautiful & cozy house with 9 bed / 5 bath with Private Pool + Spa. This home has all the amenities necessary for your family and friends to spend a precious and ...

[Email Contact](#)

[Understanding power distribution units for outdoor ...](#)

George Parker, Director of Pop Up Power Supplies, answers five of the most common questions asked by specifiers and site owners regarding ...

[Email Contact](#)



[How and why to secure an outlet for outdoor use?](#)

How (and why) to secure an outlet for outdoor use? High traffic areas such as transportation hubs, industrial zones, gas stations or even sporting arenas may require a power outlet for ...

[Email Contact](#)

[A Complete List Of Ways to Power a Security Camera ...](#)

DC or direct current power supplies usually come in budget-friendly security camera systems. This power supply option is a wired connection that ...

[Email Contact](#)



[Putting safety and security first when specifying outdoor power](#)

Installing a power supply in outdoor spaces is an excellent way to make them more usable and turn what is often an underused asset into something that can generate revenue. But when ...

[Email Contact](#)

[Police Militarization Purchasing Catalog Contact List](#)

An organization seeking to use GSA sources of supply for transportation of goods pursuant to a contract entered into under the FAR may do so if the requesting entity is eligible under the ...

[Email Contact](#)



[Active Transportation , US Department of Transportation](#)

Active transportation infrastructure helps create interconnected transportation networks that can help reduce congestion and traffic fatalities ...

[Email Contact](#)





[Other Power-Driven Mobility Devices](#)

You as the public accommodation have the right to assess if the device cannot be accommodated due to legitimate safety concerns. This must be based on actual risks and must not be ...

[Email Contact](#)



 LFP 280Ah C&I

[\(PDF\) Electric Vehicles for Public Transportation in ...](#)

So far, not much attention has been devoted to the use of EVs for public transportation, such as taxis and buses. However, a massive ...

[Email Contact](#)



[Accommodating Riders Using Mobility Devices](#)

As introduced in the General Requirements section, transit agencies are required to maintain accessibility features including vehicle lifts and ramps, ensure they are in operating ...

[Email Contact](#)



[Understanding power distribution units for outdoor spaces](#)

George Parker, Director of Pop Up Power Supplies, answers five of the most common questions asked by specifiers and site owners regarding power distribution units for ...

[Email Contact](#)





[Where are outdoor power outlets commonly located? : r/SanJose](#)

Where are outdoor power outlets commonly located? I'm currently a scooter commuter, and my scooter has a range of about 12 miles, which is usually just enough to get me from home to work.

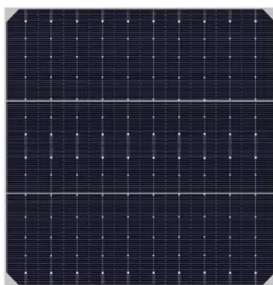
[Email Contact](#)



[AC Adapter Regulations in the United States: An ...](#)

UL 1310 covers Class 2 battery chargers and power supplies intended for both indoor and outdoor use. The requirements in the standard ...

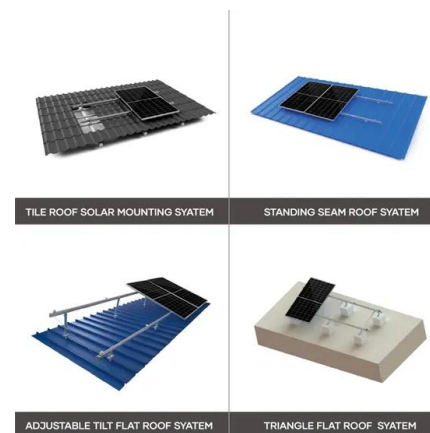
[Email Contact](#)



[How and why to secure an outlet for outdoor use?](#)

How (and why) to secure an outlet for outdoor use? High traffic areas such as transportational hubs, industrial zones, gas stations or even sporting arenas ...

[Email Contact](#)



[The Future of Solar Energy in the Transportation Industry: Electric](#)

The infrastructure that supports public transit, such as charging terminals, repair centers, and transportation hubs, can also be powered by renewable energy. In order to ...

[Email Contact](#)





[Solar Energy in the Transportation Sector](#)

Solar panels installed on the roofs of these vehicles capture sunlight, which is converted into electricity to power various systems such as ...

[Email Contact](#)



[Powering Up Safely: How a Raintight Class 2 Power ...](#)

A city's public transportation system used raintight Class 2 power supplies to power its security cameras. The power supplies were able to ...

[Email Contact](#)

[What Are The Rules For Using Public Transportation With...](#)

Learn the rules for using public transportation with oversized outdoor or camping gear. Find tips on packing, storage options, and being considerate of fellow passengers.

[Email Contact](#)



[Metered Power Pedestals: Vital for Transportation Infrastructure](#)

Enhance transportation infrastructure with metered power pedestals, ensuring durable, compliant solutions for efficient electrical distribution.

[Email Contact](#)





[Powering Up Safely: How a Raintight Class 2 Power Supply](#)

A city's public transportation system used raintight Class 2 power supplies to power its security cameras. The power supplies were able to provide reliable power to the cameras, ...

[Email Contact](#)



Home Energy Storage (Stackble system)



What Are The Rules For Using Public Transportation With Oversized Outdoor

Learn the rules for using public transportation with oversized outdoor or camping gear. Find tips on packing, storage options, and being considerate of fellow passengers.

[Email Contact](#)

[Staying Safe On Public Transportation: Tips & Guide](#)

Discover essential tips for staying safe on public transportation, from awareness to personal security strategies, in our comprehensive safety guide.

[Email Contact](#)



[AC Adapter Regulations in the United States: An Overview](#)

UL 1310 covers Class 2 battery chargers and power supplies intended for both indoor and outdoor use. The requirements in the standard apply to cord-connected and direct ...

[Email Contact](#)





[ADA Requirements: Wheelchairs, Mobility Aids, and Other Power ...](#)

All types of devices powered by fuel or combustion engines, for example, may be excluded from indoor settings for health or environmental reasons, but may be deemed ...

[Email Contact](#)



Contact Us

For catalog requests, pricing, or partnerships, please visit:
<https://www.ogrzewanie-jelenia.pl>