

Communication base station EMS main equipment power





Overview

What are the components of a base station?

Power Supply: The power source provides the electrical energy to base station elements. It often features auxiliary power supply mechanisms that guarantee operation in case of lost or interrupted electricity, during blackouts. **Baseband Processor:** The baseband processor is responsible for the processing of the digital signals.

How does EMS radio communication work?

It may also convert the signal to a telephone signal and send the communications through public or dedicated telephone lines. EMS radio communication takes place in the VHF low band, VHF high band, and UHF band. VHF low band is the radio frequencies from 32-50 megahertz (MHz).

What frequency does EMS radio communication take place in?

EMS radio communication takes place in the VHF low band, VHF high band, and UHF band. VHF low band is the radio frequencies from 32-50 megahertz (MHz). They are able to follow the shape of the earth allowing communication over long distances. These frequencies are more susceptible to interference from, weather, buildings, and electrical equipment.

How does EMS rebroadcast a radio signal?

Some rebroadcast by converting signals to radio and others do so by converting to microwaves. It may also convert the signal to a telephone signal and send the communications through public or dedicated telephone lines. EMS radio communication takes place in the VHF low band, VHF high band, and UHF band.

Why is communication important in EMS?

Communication in EMS is essential. Patients must be able to access the system, the system must be able to dispatch units, EMTs must have a means



of communicating with medical direction and receiving facility, and EMTs must be able to communicate vital information to other personnel.

Why are base stations important in cellular communication?

Base stations are important in the cellular communication as it facilitate seamless communication between mobile devices and the network communication. The demand for efficient data transmission are increased as we are advancing towards new technologies such as 5G and other data intensive applications.



Communication base station EMS main equipment power



[Communications System Power Supply Designs](#)

Communications infrastructure equipment employs a variety of power system components. Power factor corrected (PFC) AC/DC power supplies with load sharing and redundancy (N+1) at the ...

[Email Contact](#)

[Communication Base Station Energy Solutions](#)

Due to harsh climate conditions and the absence of on-site personnel to maintain fuel generators, the company required a reliable solution to ensure the base ...

[Email Contact](#)



[CERT Emergency Communications PM](#)

Two-way radio is a communications mode that does not rely on external power supplies or physical communications infrastructure. This makes two-way radios a good communications ...

[Email Contact](#)

[Communications-EMT -- Hopper Institute®](#)

It usually runs off community electrical power and transmits at much higher power than smaller, portable radios. Alternative power in the form of generators or a set of batteries are usually ...



[Email Contact](#)



Power Base Station

Base station power refers to the output power level of base stations, which is defined by specific maximum limits (24 dBm for Local Area base stations and 20 dBm for Home base stations) ...

[Email Contact](#)



[Maintenance points for power supply equipment of mobile communication](#)

The power requirements of the main equipment of the base station are not as high as those of the switching equipment. The interruption of the base station power supply will not cause data loss ...

[Email Contact](#)



[Chapter 2: Preparatory Part 2 - Emergency Medical Responder](#)

This section explores the key elements of communication in EMS, focusing on the technologies used, best practices for effective communication, and the importance of maintaining robust ...

[Email Contact](#)



[What Are Base Station Antennas? Complete Guide](#)

In modern telecommunications systems, the base station antenna stands out as an undeniable and crucial component to facilitate our daily ...

[Email Contact](#)



[Chapter 4 Communication and Documentation](#)

allocating specific radio frequencies for use by EMS providers, licensing base stations and assigning appropriate radio call signs for those stations, establishing licensing standards and ...

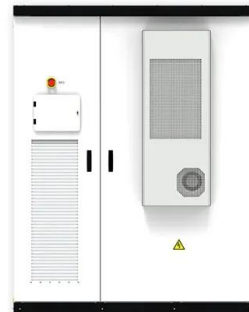
[Email Contact](#)



Base Stations

Power Supply: The power source provides the electrical energy to base station elements. It often features auxiliary power supply mechanisms that guarantee operation in ...

[Email Contact](#)



[EMS System Communications - georgiaemsacademy](#)

The base station radio generally sites on a desk and is programmed to transmit with increased power to overcome any obstacles or distance that could affect signal propagation.

[Email Contact](#)



[Optimizing the power supply design for communication base stations](#)

The design of the power supply system of the communication base station is critical to ensure the stable operation of the equipment.

[Email Contact](#)



[10 things you need to consider when it comes to your ...](#)

10 things you need to consider when it comes to your EMS station Be sure to include ample space for sleep, fitness and other critical activities ...

[Email Contact](#)

[Post-earthquake functional state assessment of communication base](#)

The method considers the dependence between the equipment and its hosting building structure, and the impact of power outages. This model produces seismic functional ...

[Email Contact](#)



[Statewide EMS Operations & Communications Resource ...](#)

The EMS communications system must provide EMS field personnel with a channel of communications that permits the exchange of vital information between both EMS field ...

[Email Contact](#)

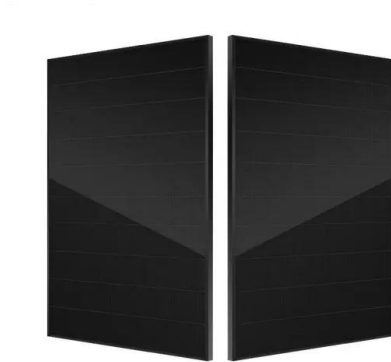




[Communication Base Station Energy Solutions](#)

Due to harsh climate conditions and the absence of on-site personnel to maintain fuel generators, the company required a reliable solution to ensure the base station's stable operation and ...

[Email Contact](#)



[Chapter 5 Communication Questions Flashcards Quizlet](#)

To ensure accuracy and synchronicity, most EMS systems use military time rather than standard A.M. and P.M. designations. Choose the military time that correctly represents 9:32 P.M. ...

[Email Contact](#)

Communication base station

Communication base stations are one of the core nodes of modern communication networks and require uninterrupted power supply to maintain signal coverage and data transmission.

[Email Contact](#)



[Maintenance points for power supply equipment of mobile...](#)

The power requirements of the main equipment of the base station are not as high as those of the switching equipment. The interruption of the base station power supply will not cause data loss ...

[Email Contact](#)



[Dispatch 101: The ins and outs of communication centers](#)

Dispatch centers: The first of the first responders
A back-to-basics review of communication center types and facility equipment, plus must-have dispatcher skills

[Email Contact](#)



[Eltek Power Rectifier Module for Communication Base Stations](#)

The company also undertakes communication equipment after-sales service, communication equipment construction, with power supply equipment, base station main equipment, data ...

[Email Contact](#)

[Chapter 5 Communication Flashcards , Quizlet](#)

What role does the FCC play in EMS communications? Licenses base stations, assigns radio call signs, approves equipment for use, establishes limitations for transmitter power output, ...

[Email Contact](#)



Contact Us

For catalog requests, pricing, or partnerships, please visit:
<https://www.ogrzewanie-jelenia.pl>