

Communication green base station flash disconnection





Overview

Does basestation 1.0 flash between blue and green?

Basestation 1.0 Flashing between blue and green. I have an HTC VIVE yes. the oldie one. with 2 1.0 basestations. recently one of them started flasing from green to blue back to green. I got this from the Log: 1st restart:.

How do I fix a broken base station?

Try to put the base station in B mode if it's in C mode, or try to use the sync cable, don't forget to put your base stations in A and B mode. If that doesn't fix it, I would have no clue of what can be the issue. The base station would seems to be broken.

What version of guide do I need for a base station?

Version 2.0 base stations are used mainly by Vive Pro (since April 2018) and Valve Index (since June 2019), so older guides are most likely for version 1.0. You can assume that all guides/tips for base stations without the version number are for version 1.0, but basic tips work for both (like avoiding reflective surfaces).



Communication green base station flash disconnection



Green Wireless Communication

Green wireless communication can be achieved with the use of Green handover, Green codes, Green electronics, Green power amplification systems, Green antennas and Green base ...

[Email Contact](#)

[base station problem :: SteamVR General Discussions](#)

New 2.0 base stations has sync signal embedded to the laser signal so they don't have different modes anymore, all base stations work independently. I assume that the button ...

[Email Contact](#)



[\(PDF\) Green Communications: Techniques and ...](#)

PDF , Green technology has drawn a huge amount of attention with the development of the modern world. Similarly with the development in ...

[Email Contact](#)

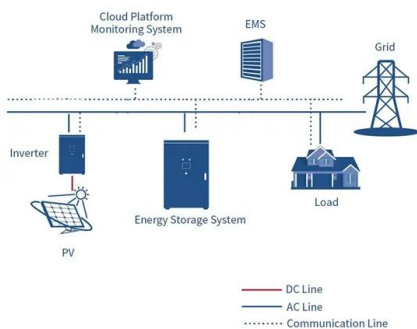


Energy-Efficient Base Stations , part of Green Communications

With the explosion of mobile Internet applications and the subsequent exponential increase of wireless data traffic, the energy consumption of cellular networks has rapidly caught the ...



[Email Contact](#)



Basestation 1.0 Flashing between blue and green. : r/Vive

Try to put the base station in B mode if it's in C mode, or try to use the sync cable, don't forget to put your base stations in A and B mode. If that doesn't fix it, I would have no ...

[Email Contact](#)

[Wireless System Troubleshooting Guide](#)

Things to remember Transmit headsets **MUST** be linked to a Single Channel Base Station. Intercom only headsets are linked to Multi Channel Base Stations. Unplug all headset ...

[Email Contact](#)



[Base station 1.0 blinking blue / green](#)

The base failure mode does not depend on whether you turn on your headset or not. It should behave exactly the same with or without one (depending probably only on the time).

[Email Contact](#)

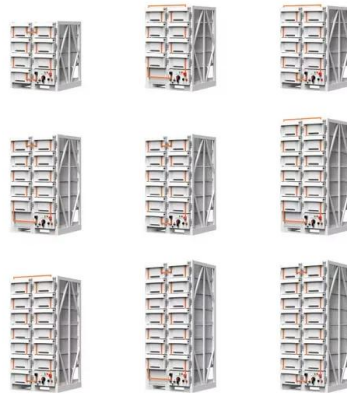




Base stations losing connection but the light stays green. : r/Vive

Did you activate bluetooth communications with the base station as well as automatic stand-by mode? Sometimes the bluetooth communication can be a bit iffy and they get put into standby ...

[Email Contact](#)



[Base Station 2.0 blinking green and blue](#)

The base station 2.0 blinks green then blue then green and repeats. Sometimes it stays blue and works, but most of the time blinks green and blue and cant work.

[Email Contact](#)

Basestation 1.0 Flashing between blue and green. : r/Vive

Try to put the base station in B mode if it's in C mode, or try to use the sync cable, don't forget to put your base stations in A and B mode. If that doesn't fix it, I would have no clue of what can ...

[Email Contact](#)

12V 10AH



Greening Communication: Sustainable Energy Storage For Base Stations

Factory-direct Greening Communication Energy Storage Solutions for Sustainable Base Stations. Enhance efficiency, reliability, and sustainability. Leading the way to a greener future!

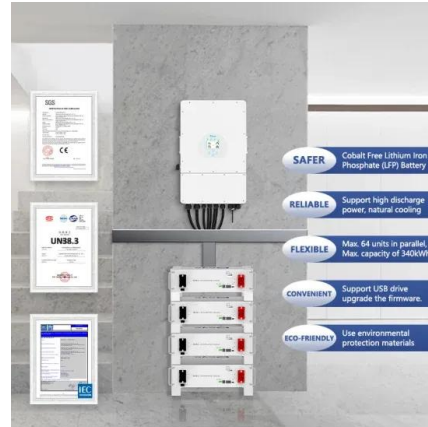
[Email Contact](#)



Ramtech Electronics WES+ Installation And Operation Manual

Page 2: Table Of Contents
Inspection of other system units
Cancelling a Silent Test
Moving a unit on site
Removing a unit from the site
Advanced systems - Base Stations Menu
Overview ...

[Email Contact](#)



1.0 base station doesn't track, but led is green : r/Vive

One of my 1.0 base stations just stopped tracking. I've tried cable sync and different channels without any success. With A mode it doesn't track either. It's discoverable via ...

[Email Contact](#)

Base station green flash and fade : r/simplisafe

The base station is doing a flash of Blue, White, Blue, Green, and then a green fade. The app has no notifications and neither does the pinpad? Trying to force an update now, but curious if ...

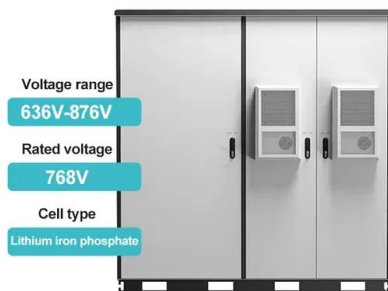
[Email Contact](#)



Base Station no longer connects to network

I have a VMB4500 base station. It no longer was connecting to the network. I tried resetting it, unplugging and replugging it in. Tried different Ethernet cable. Connected both ...

[Email Contact](#)





[Base station green flash and fade : r/simplisafe](#)

The base station is doing a flash of Blue, White, Blue, Green, and then a green fade. The app has no notifications and neither does the pinpad? Trying to force an update ...

[Email Contact](#)



Base stations losing connection but the light stays green. : r/Vive

Did you activate bluetooth communications with the base station as well as automatic stand-by mode? Sometimes the bluetooth communication can be a bit iffy and they ...

[Email Contact](#)

1.0 base station doesn't track, but led is green : r/Vive

One of my 1.0 base stations just stopped tracking. I've tried cable sync and different channels without any success. With A mode it doesn't track either. It's ...

[Email Contact](#)



Troubleshooting Guide: How to Fix Arlo Base Station Offline Issues

Arlo provides customer support services that can assist you in resolving complex issues and getting your base station back online. To prevent Arlo base station offline problems ...

[Email Contact](#)



[Base stations randomly disconnect](#)

When bluetooth is turned on it seems to still have communication with the base stations even when Steam VR claims that they are disconnected. The problem has persisted ...

[Email Contact](#)



[Green and Sustainable Cellular Base Stations: An](#)

This study presents an overview of sustainable and green cellular base stations (BSs), which account for most of the energy consumed in ...

[Email Contact](#)

Base Station Blinking Green After Doing Manual ...

I factory restarted my headset and controllers from Steam VR and reset them. I read that if the light is blinking green, the manual fix worked. But now I'm ...

[Email Contact](#)



[How To Fix SteamVR Not Detecting Base Stations](#)

If you are using the older 1.0 base stations, set one to channel 'B' and the other to channel 'C' for optimal communication. For the newer 2.0 ...

[Email Contact](#)



[Base Stations won't go to sleep \(Solved for me\)](#)

So try this: Start SteamVR / Wait for Green / Move HMD so the Base Stations Track It / Click SteamVR / Settings / Bluetooth / Click Checkbox for Enable Bluetooth ...

[Email Contact](#)



- ☒ IP65/IP55 OUTDOOR CABINET
- ☒ ALUMINUM
- ☒ OUTDOOR ENERGY STORAGE CABINET
- ☒ OUTDOOR MODULE CABINET

FFI& II: Chapter 2: Communications Flashcards , Quizlet

Study with Quizlet and memorize flashcards containing terms like base station radio, clear text, Federal Communications Commission (FCC) and more.

[Email Contact](#)

Base Station Blinking Green After Doing Manual Reset Fix : r/Vive

I factory restarted my headset and controllers from Steam VR and reset them. I read that if the light is blinking green, the manual fix worked. But now I'm stuck nothing is ...

[Email Contact](#)



Contact Us

For catalog requests, pricing, or partnerships, please visit:
<https://www.ogrzewanie-jelenia.pl>