

# **Container outdoor power supply is fully charged**





## Overview

---

Do shipping containers have electricity?

Modern shipping containers can accommodate electrical cables and outlets, fixtures, and accessories or even function as a battery or power source for supplying energy to electrical equipment in remote locations. Shipping containers with electricity are a cutting-edge solution, especially when you need more than just storage.

How many power supplies can be mounted in a 40ft container?

Power supplies <300kW can be mounted in only a single 40ft container, while greater powers can be achieved in multiple containers and connected upon delivery. Depending upon specifications, containerized power supplies may be stacked, or located side-by-side. Setup and testing or shut-down and packing can be achieved within a matter of days.

How to install shipping container electricity?

There are three ways you can opt for shipping container electricity installations: you can do it yourself, outsource the work to a container modification expert, or buy a container pre-installed with all the electrical utilities.

Can you put solar power in a shipping container?

There are many ways to skin a cat, and even more ways to add solar power to a shipping container. To be fair, I cheated a bit. Well, not really cheated, but I just went with a retail solar generator system instead of DIYing that part myself from à la carte components.

How do I power a container structure?

If your container structure lies close to a power grid, you can use an appropriate, rated aerial cable (which can provide the required current and function as a ground wire) to power the structure. You must secure the aerial



cable above the ground level using posts or tree trunks for safe operations.

What types of power supplies can be provided?

A wide range of high voltage, CW DC, pulsed or modulated waveform outputs can be provided. The entire system is made to be entirely weatherproof. Power supplies <300kW can be mounted in only a single 40ft container, while greater powers can be achieved in multiple containers and connected upon delivery.



## Container outdoor power supply is fully charged

---



### [Battery Energy Storage Factsheets](#)

What does BESS look like and where? Housed in specially engineered shipping containers, outdoor-rated cabinets, or purpose-built buildings Grid-scale facilities vary in size Currently ...

### [Email Contact](#)

### **Can I run power to a shipping container? Off-Grid ...**

In short, you can indeed run power to a container - either by extending a line from the grid or by turning the container itself into a mini ...

### [Email Contact](#)



### [The 7 Best Portable Power Stations of 2025](#)

Bring big backup power with you with these expert-recommended portable power stations, which can store enough power to charge electronics, appliances, and more.

### [Email Contact](#)

### [Understanding BESS: MW, MWh, and Charging](#)

For a 10 MWh BESS operating at 1C, it can deliver 10 MW of power for one hour or recharge entirely in one hour if supplied with 10 MW of power. This high rate is ideal for ...

### [Email Contact](#)



### Let There Be Light! How to Power a Shipping Container

We offer two basic electrical packages, both of which include an essential consumer unit and external hook up, which can be plugged in to an ...

[Email Contact](#)



### Battery Energy Storage System (BESS) , The Ultimate Guide

Principal BESS characteristics Rated Power Capacity Rated Power Capacity is the total discharge capability (usually in megawatts (MW)) or the maximum rate of discharge the BESS can ...

[Email Contact](#)



### Containerized Power Supplies

With fully integrated systems mounted in intermodal containers, built to meet any size requirement, your power supply can be designed to be easily transportable.

[Email Contact](#)





## A Comprehensive Guide on How to Store LiFePO4 Batteries

Learn how to properly store LiFePO4 batteries for maximum lifespan and safety, whether in summer or winter. By following the guidelines, you can store your LiFePO4 ...

[Email Contact](#)



## [How to Store Lithium Batteries: Ultimate Guide](#)

Lithium-ion batteries should be stored in a cool, dry place with low humidity and out of direct sunlight. This guide teaches how to store lithium batteries, maintenance tips, and more.

[Email Contact](#)

## Can I run power to a shipping container? Off-Grid Solar Solutions ...

In short, you can indeed run power to a container - either by extending a line from the grid or by turning the container itself into a mini power station using solar panels.

[Email Contact](#)



## Can I run power to a shipping container? Off-Grid ...

Mount high-efficiency solar panels on the container roof or adjacent racks and charge a battery bank to supply power. For example, BoxPower's ...

[Email Contact](#)





## Can I Use a Portable Power Station While Charging It?

Longer charging time A portable power station takes hours to get fully charged, especially when you own a large capacity station. When you're ...

[Email Contact](#)



## How to check if an outdoor portable battery is fully charged?

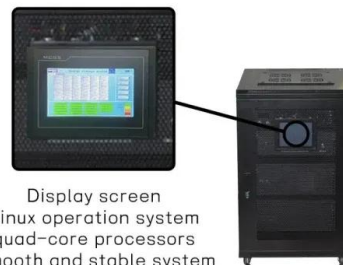
If the voltage is close to the expected voltage for a fully charged battery, then your battery is likely fully charged. Checking the Charging Time Another way to estimate if your battery is fully ...

[Email Contact](#)

## Let There Be Light! How to Power a Shipping Container

We offer two basic electrical packages, both of which include an essential consumer unit and external hook up, which can be plugged in to an external source. ...

[Email Contact](#)



## Can the outdoor power supply be used while charging it?

Although the outdoor energy storage power supply is a safe and stable small mini energy storage power supply. But as long as it is the power supply equipment, the later maintenance and ...

[Email Contact](#)





## How I turned a shipping container into a solar off-grid charging

This could power a tiny home or other small off-grid setup like a hunting cabin. For me though, I'll start with just keeping my electric tractors and motorcycles charged!

[Email Contact](#)



## [Container Energy Storage System](#)

Elephant Power's Container Energy Storage System is a powerful, weather-resistant solution designed for industrial and commercial applications. Engineered to support both wind and ...

[Email Contact](#)



## CATL EnerC+ 306 4MWH Battery Energy Storage System Container ...

The EnerC+ container is a battery energy storage system (BESS) that has four main components: batteries, battery management systems (BMS), fire suppression systems (FSS), and thermal ...

[Email Contact](#)



## How do I know if an outdoor energy power supply is fully charged?

In conclusion, there are several methods you can use to determine whether an outdoor energy power supply is fully charged, including checking the indicator lights, monitoring the charging ...

[Email Contact](#)







### [Precautions for using Outdoor power supply](#)

Confirm that the power supply casing is not damaged, the interface is not loose, and the battery is fully charged. Check if the supporting equipment is compatible.

[Email Contact](#)



### **How do I know if my outdoor battery is fully charged?**

In this blog post, I'll share some practical ways to determine if your outdoor battery is fully charged, and also introduce some of our high - quality outdoor battery products.

[Email Contact](#)

### **Container Lights (rechargeable)**

Wireless, rechargeable and magnetic motion sensor LED lights for use in storage containers and other enclosed spaces with no easy access to power. The ...

[Email Contact](#)



## **Contact Us**

For catalog requests, pricing, or partnerships, please visit:  
<https://www.ogrzewanie-jelenia.pl>