

Continuous discharge current of energy storage cabinet battery

LPSB48V400H
48V or 51.2V





Overview

Maximum Continuous Discharge Current - The maximum current at which the battery can be discharged continuously. This limit is usually defined by the battery manufacturer in order to prevent excessive discharge rates that would damage the battery or reduce its capacity.



Continuous discharge current of energy storage cabinet battery



[BU-501a: Discharge Characteristics of Li-ion](#)

The performance of these two battery types is characterized by energy storage, also known as capacity, and current delivery, also known as ...

[Email Contact](#)

[A Guide to Understanding Battery Storage Specifications](#)

These batteries offer a remarkable combination of high energy density, long cycle life, and low self-discharge rates. They are incredibly versatile and find applications across a range of ...

[Email Contact](#)



[How much is the energy storage discharge current? , NenPower](#)

Exceeding the safe discharge current can lead to reduced battery lifespan, overheating, and even failure of the energy storage system. Therefore, it's important to consult ...

[Email Contact](#)



[Comprehensive review of energy storage systems technologies, ...](#)

Battery, flywheel energy storage, super capacitor, and superconducting magnetic energy storage are technically feasible for use in distribution networks. With an energy density ...



[Email Contact](#)



[Technical Specifications of Battery Energy Storage Systems \(BESS\)](#)

Key figures for battery storage systems provide important information about the technical properties of Battery Energy Storage Systems (BESS). They allow for the comparison of ...

[Email Contact](#)



[How do I figure out max continuous discharging current of a battery?](#)

Either it will tell you the max discharge current, or it will tell you the capacity at a particular discharge rate, probably in the form C/20 where C means the capacity.

[Email Contact](#)

Sample Order
UL/KC/CB/UN38.3/UL



[BT-PPE-ECO4847P - PowerPlus Energy ECO 48VDC 4.7kWh LFP Battery](#)

Features: - 4.7kWh Nominal Capacity -
Recommended Depth of Discharge 80% or less -
39A Continuous Discharge Current - >96%
Efficiency - Battery can be discharged from full to ...

[Email Contact](#)



What is the maximum discharge current of the energy storage cabinet battery

What is a maximum continuous discharge current? Maximum Continuous Discharge Current - The maximum current at which the battery can be discharged continuously. This limit is usually ...

[Email Contact](#)



[Continuous Discharge Current . Glossary of Musashi Energy ...](#)

Understanding this term is essential for anyone working with batteries or designing electronic circuits. This article delves into the concept of continuous discharge current, its history, ...

[Email Contact](#)



[How To Calculate Battery Discharge Rate](#)

Knowing how long a battery should last can help save you money and energy. The discharge rate affects the lifetime of a battery. Specifications ...

[Email Contact](#)



Battery C Rating Chart

The C-rating indicates the maximum safe continuous discharge current that can be drawn from the battery, with higher C-ratings allowing for faster discharge but reduced overall ...

[Email Contact](#)



How much is the energy storage discharge current?

Exceeding the safe discharge current can lead to reduced battery lifespan, overheating, and even failure of the energy storage system. ...

[Email Contact](#)



A Guide to Understanding Battery Specifications

Maximum Continuous Discharge Current - The maximum current at which the battery can be discharged continuously. This limit is usually defined by the battery manufacturer in order to ...

[Email Contact](#)



Understanding the "maximum continuous discharge current" battery

1) So when a 12v battery states that its maximum continuous discharge current is, say, 125 amps/Ah, that means that battery does not like to be discharging 1,500W ...

[Email Contact](#)



????

The system's analysis and statistics functions include statistics on the operation of the energy storage system, including the charge and discharge capacity, maximum and minimum power, ...

[Email Contact](#)

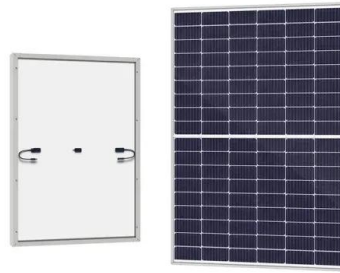




[What is the maximum discharge current of the energy storage ...](#)

What is a maximum continuous discharge current? Maximum Continuous Discharge Current - The maximum current at which the battery can be discharged continuously. This limit is usually ...

[Email Contact](#)



[Understanding the "maximum continuous discharge current" ...](#)

1) So when a 12v battery states that its maximum continuous discharge current is, say, 125 amps/Ah, that means that battery does not like to be discharging 1,500W ...

[Email Contact](#)

[12 April 2023 CEC Energy Storage System List Data ADA ...](#)

Energy Storage System List (Full Data) Data has not changed since April 11, 2023 This list contains an extensive amount of equipment information. If you require any assistance, please ...

[Email Contact](#)



[Specifications for Lithium-ion Battery Cabinets](#)

NOTE: The battery temperature must return to room temperature $\pm 3^{\circ}\text{C}$ (5°F) before a new discharge at maximum continuous discharge power. If not, the battery breaker may be tripped ...

[Email Contact](#)





Definitions and reference values for battery systems in electrical

According to [5] constant battery power discharge is the battery operation in which the discharge power output, i.e. the product of discharge current and discharge voltage, is held ...

[Email Contact](#)



LIFEPO4 LITHIUM BATTERY S48-100LFP ESS

Rolls Battery offers premium deep cycle and LiFePO4 lithium batteries, featuring safety certifications, rack compatibility, and advanced connectivity options.

[Email Contact](#)



Specifications for Lithium-ion Battery Cabinets

NOTE: If the battery temperature is higher than the threshold after a full discharge at maximum continuous discharge power, the UPS may have to reduce the charge current to zero to ...

[Email Contact](#)



1.5v energy storage cabinet battery discharge maximum current

What is the Max discharge rate of a battery pack? The max discharge rate of a cell is the highest current that the cell can be safely discharged at. However, The max discharge rate of a pack ...

[Email Contact](#)





[A Guide to Understanding Battery Storage Specifications](#)

These batteries offer a remarkable combination of high energy density, long cycle life, and low self-discharge rates. They are incredibly versatile and find applications across a ...

[Email Contact](#)



Contact Us

For catalog requests, pricing, or partnerships, please visit:
<https://www.ogrzewanie-jelenia.pl>