

# Disadvantages of fast-charging outdoor power supplies



-  **Efficient**  
Higher Revenue
  - Max. Efficiency 97.5%
  - Max. PV Input Voltage 600V
  - 150% Peak Output Power
  - 2 MPP Trackers, 150% DC Input Oversizing
  - Max. PV Input Current 16A, Compatible with High Power Modules
-  **Intelligent**  
Simple O&M
  - IP66 Protection Degree: support outdoor installation
  - Smart I-V Curve Diagnosis Function: locate PV string faults accurately and automatically detect faults
  - DC & AC Type II SPD: prevent lightning damage
  - Battery Reverse Connection Protection
-  **Flexible**  
Abundant Configuration
  - Plug & Play, EPS Switching Under 10ms
  - Compatible with Lead-acid and Lithium Batteries
  - Max. 6 units Inverters Parallel
  - AFCI Function (Optional): when an arc-fault is detected the inverter immediately stops operation



## Overview

---

What are the pros and cons of fast charging?

The most obvious is the fact that it speeds up the charging process for your devices so you can be more portable faster. They also are becoming increasingly more compact, giving you more power in a smaller package. One of the major cons to fast charging is the compatibility between devices.

Why is fast charging a bad idea?

Frequent use of fast charging can lead to increased heat generation and stress on battery cells, potentially accelerating battery degradation over time. A balanced approach might involve using fast charging when necessary but relying on slow charging for routine, everyday charging.

Is slow charging better than fast charging?

While both slow and fast charging methods have their place in modern smartphone use, it's clear that they can have different impacts on battery health. Fast charging offers convenience at the potential cost of increased long-term wear, while slow charging may help preserve battery life but requires more time.

Should you use fast charging?

Try to keep your charge level between 20% and 80% for optimal health. Don't Overdo It: Use fast charging when you're in a pinch, but switch to slower charging overnight or when time allows. Should You Avoid Fast Charging?

.

Does fast charging affect battery life?

Yes, fast charging can affect battery life, but the extent of the impact depends on how it's used. While fast charging is incredibly convenient, it generates heat and places stress on the battery, which can lead to long-term wear. Let's



dive into the key factors behind this and how they influence battery health:.

How much power does a fast charging device need?

To qualify as “fast charging,” the charger typically needs to deliver at least 50 watts of power. That translates to voltage and current values like 400V and 125A ( $400 \times 125 = 50,000$  W). On smaller devices like smartphones, fast charging often involves delivering power at 5V, 9V, or 12V, with amperage around 2A (2000mA).



## Disadvantages of fast-charging outdoor power supplies

---



### [AC/DC Power Supply Adapter& Charger Manufacturer](#)

A power supply refers to a device that converts the available power into a form that can be used by an electrical device. One of the most common types of power supplies is the linear power ...

### [Email Contact](#)

### [Slow vs. Fast Charging: Pros, Cons, and Insights](#)

Fast charging offers quick power boosts for busy days, while slow charging provides a gentler approach for overnight use. Each method has its strengths: fast charging ...

### [Email Contact](#)



### [What Is EV Fast Charging: A Rapid Charge Guide](#)

Fast chargers offer a middle ground in EV charging. They provide quicker charging than slow chargers but don't match the speed of rapid or ultra-rapid stations. Typically, these units ...

### [Email Contact](#)

### [Understanding the Limitations: Disadvantages of Outdoor Portable Power](#)

In this blog post, we will explore some of the disadvantages of outdoor portable power stations, helping you make an informed decision and understand the potential ...



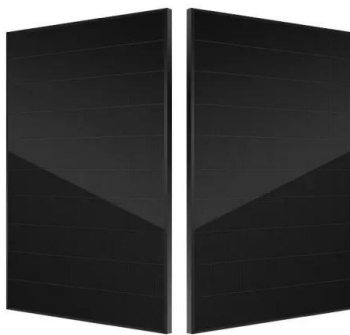
[Email Contact](#)



### [Advantages and disadvantages of outdoor power supply](#)

Advantages And Disadvantages Of Single Phase Power Supplies. Advantages Of Single Phase Power Supply: Single phase power supplies are generally used for applications that require up ...

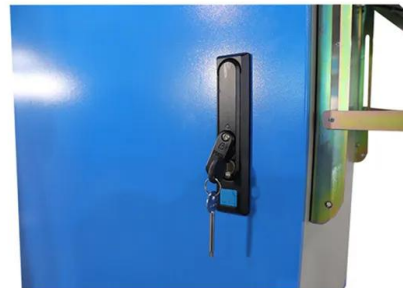
[Email Contact](#)



### [Understanding the Limitations: Disadvantages of Outdoor...](#)

In this blog post, we will explore some of the disadvantages of outdoor portable power stations, helping you make an informed decision and understand the potential ...

[Email Contact](#)



### [Advantages and disadvantages of energy storage charging piles ...](#)

Optimized operation strategy for energy storage charging piles ... At the current stage, scholars have conducted extensive research on charging strategies for electric vehicles, exploring the ...

[Email Contact](#)





### [Hunger for ultrafast charging is killing electric vehicle batteries](#)

Just like charging your smartphone too fast ruins its battery health, the EV battery is also susceptible to bad outcomes from ultrafast charging.

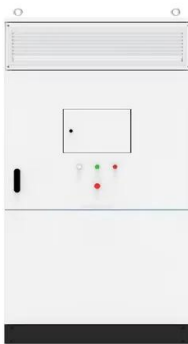
[Email Contact](#)



### **Fast Charging vs Slow Charging**

Each method has its distinct advantages and disadvantages, and understanding the differences can help you make informed choices about how to power your devices. In this ...

[Email Contact](#)



### [What Is Fast Charging? Pros, Cons, and Impact on ...](#)

While fast charging is incredibly convenient, it generates heat and places stress on the battery, which can lead to long-term wear. Let's dive into ...

[Email Contact](#)



### [The Disadvantages of Using DC Fast Charging in EVs](#)

While it sounds like the perfect solution for busy drivers, there's more beneath the surface. From long-term costs to hidden technical risks, the ...

[Email Contact](#)



## [The Disadvantages of Using DC Fast Charging in EVs](#)

While it sounds like the perfect solution for busy drivers, there's more beneath the surface. From long-term costs to hidden technical risks, the disadvantages of using DC fast ...

[Email Contact](#)



## [What Is Fast Charging? Pros, Cons, and Impact on Battery Life](#)

While fast charging is incredibly convenient, it generates heat and places stress on the battery, which can lead to long-term wear. Let's dive into the key factors behind this and ...

[Email Contact](#)

## [Disadvantages of Fast Charging: Drawbacks and Dangers](#)

Portable power stations offer convenient energy on-the-go, ideal for camping and emergencies. They provide clean energy without noise, but ...

[Email Contact](#)



## [Fast Chargers vs. Regular Chargers: Is It Worth the Extra Cost?](#)

Sometimes older devices take just as long to power up as they do on the older plugs. As we said before, outdated cables or others that just don't support the necessary flow ...

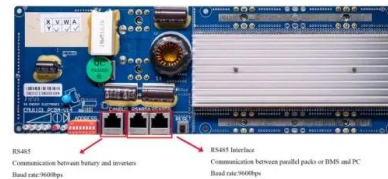
[Email Contact](#)



## [The Pros and Cons of Fast Charging: Everything You ...](#)

Discover the pros and cons of fast charging in 2025. Learn how it works, its benefits, and its impact on battery health, along with tips to ...

[Email Contact](#)



## [Pros And Cons of Portable Power Station , Must-Know Facts](#)

Portable power stations offer convenient energy on-the-go, ideal for camping and emergencies. They provide clean energy without noise, but limited capacity might not support ...

[Email Contact](#)

## [The Pros and Cons of Fast Charging: Everything You Need to Know](#)

Discover the pros and cons of fast charging in 2025. Learn how it works, its benefits, and its impact on battery health, along with tips to maximize efficiency.

[Email Contact](#)



## [Advantages and Disadvantages of Xiaomi Outdoor Power Supply](#)

How much power does the Mijia outdoor power supply 1000 Pro support? For example, according to the official data provided by the brand, the Mijia Outdoor Power Supply 1000 Pro supports ...

[Email Contact](#)





### [A Complete Guide to DC Fast/Rapid Charging](#)

Summary DC Rapid/Fast charging is the fastest method of charging an EV, providing the high power needed to quickly replenish batteries during short ...

[Email Contact](#)



Standard 20ft containers



Standard 40ft containers

### [Five solutions for outdoor power supply - ALLWEI](#)

Nowadays, people in cities can enjoy the convenience of urban power supply. But more and more people prefer outdoor sports and want to experience nature outdoors. But ...

[Email Contact](#)



### [Complete Guide To Portable Power Supply: Pros& Cons, How to ...](#)

A solar-powered portable power supply offers solar power solutions to homes. These are also used during blackouts, off-grid living, and outdoor adventures, ensuring ...

[Email Contact](#)



### [The advantages and disadvantages of fast charger ...](#)

Disadvantages of slow-charging charging posts: Charging time is long and often takes several hours to charge a lossy battery pack to a full ...

[Email Contact](#)





### What Are the Disadvantages of a Portable Power Station?

Limited Battery Capacity: Most portable power stations have a finite capacity, which can restrict their use for high-demand devices. Longer Charging Times: Many units take ...

[Email Contact](#)



### Slow vs. Fast Charging: Pros, Cons, and Insights

Fast charging offers quick power boosts for busy days, while slow charging provides a gentler approach for overnight use. Each method has its ...

[Email Contact](#)



### Considering Limitations: Exploring the Disadvantages of 300W ...

Limited Power Capacity: One of the primary disadvantages of 300W portable energy storage systems is their limited power capacity. While they are suitable for charging ...

[Email Contact](#)



18650 3.7V  
Li-ion  
RECHARGEABLE BATTERY  
2000mAh



### Mastering Public Charging and Fast Charging

Public Charging and Fast Charging Public charging plays a critical role in electric vehicle (EV) ownership, especially when you're on the go or ...

[Email Contact](#)



## Contact Us

---

For catalog requests, pricing, or partnerships, please visit:  
<https://www.ogrzewanie-jelenia.pl>