

Do 5G base stations have power at night





Overview

Do 5G base stations use more energy than 4G?

A recent white paper from telecom equipment maker Huawei illustrates the problem: 5G base stations use up to three-and-a-half times more energy than 4G infrastructure. Part of the problem is that this new generation of mobile connectivity requires more densely placed base stations.

Why are some cities putting their 5G base stations to sleep?

So as China has been rapidly rolling out new 5G base stations, reaching 410,000 nationwide in June, some cities are putting the ones they have to sleep to save energy because there aren't enough users yet.

Is 5G more energy efficient than 4G?

Although the absolute value of the power consumption of 5G base stations is increasing, their energy efficiency ratio is much lower than that of 4G stations. In other words, with the same power consumption, the network capacity of 5G will be as dozens of times larger than 4G, so the power consumption per bit is sharply reduced.

How much power does a 5G station use?

The power consumption of a single 5G station is 2.5 to 3.5 times higher than that of a single 4G station. The main factor behind this increase in 5G power consumption is the high power usage of the active antenna unit (AAU). Under a full workload, a single station uses nearly 3700W.

Does 5G have a sleep mode?

However, there is one particular feature that will make 5G networks less energy demanding: the base stations in 5G can be put into a "sleep mode" (referred to as "ultra-lean design") whenever there are no active users.

Will MIMO increase the energy consumption of 5G base stations?



As a result, there are many more hardware components per base station. Björnson believes this will probably increase the total energy consumption of 5G base stations compared to 4G. But as massive MIMO technology develops, its energy efficiency may also improve over time.



Do 5G base stations have power at night



Which RF Technologies Are Shaping 5G Base Stations?

5. Advanced Power Amplifiers Power amplifiers (PAs) in base stations play a vital role in boosting weak RF signals to transmission levels. In 5G, the demand for high-efficiency ...

[Email Contact](#)

5G base stations consume so much power that operators are ...

Information provided by Tower shows that the current average power consumption of a single tenant of a 5G outdoor base station is about 3.8KW, which is more than three times that of a ...

[Email Contact](#)



Why does 5g base station consume so much power and how to ...

During the night, 5G base stations do not open all functions on a daily basis, but only operate at the lowest threshold, and although 5G devices are sleeping, they can still ...

[Email Contact](#)

[Front Line Data Study about 5G Power Consumption](#)

The power consumption of a single 5G station is 2.5 to 3.5 times higher than that of a single 4G station. The main factor behind this increase in 5G power consumption is the high power ...



[Email Contact](#)

Home Energy Storage (Stackble system)



The 5G Dilemma: More Base Stations, More Antennas--Less Energy?

However, there is one particular feature that will make 5G networks less energy demanding: the base stations in 5G can be put into a "sleep mode" (referred to as "ultra-lean ...

[Email Contact](#)

Understanding 5G Micro Sleep and Power Amplifier ...

Energy Savings: Micro sleep modes contribute to significant energy savings in 5G networks by reducing the power consumption of base stations, which are ...

[Email Contact](#)



Understanding 5G Micro Sleep and Power Amplifier Efficiency

Energy Savings: Micro sleep modes contribute to significant energy savings in 5G networks by reducing the power consumption of base stations, which are major energy consumers.

[Email Contact](#)



Energy consumption optimization of 5G base stations considering

An energy consumption optimization strategy of 5G base stations (BSs) considering variable threshold sleep mechanism (ECOS-BS) is proposed, which includes the initial ...

[Email Contact](#)



5G Base Station Deployments; Open-RAN Competition & HUGE 5G BS Power

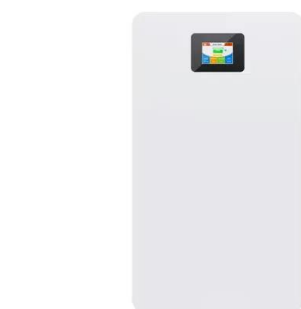
Selected 5G base stations in China are being powered off every day from 21:00 to next day 9:00 to reduce energy consumption and lower electricity bills. 5G base stations are ...

[Email Contact](#)

5G towers are consuming a lot of energy, so China Unicom is ...

At the beginning of August, a China Unicom branch announced that it would put some of its ZTE 5G base stations to sleep between 9pm and 9am to reduce electricity costs in ...

[Email Contact](#)



Are the three major operators shutting down 5G base stations to ...

Wang Xiaochu, chairman of China Unicom, recently stated that 5G base stations are smart base stations that will automatically shut down or reduce capacity at night when ...

[Email Contact](#)



Chinese carrier exec says no need to be surprised by nighttime 5G base

A recent move by a branch of China Unicom to put some of its 5G base stations to sleep at night in order to save power has attracted widespread attention. In response, the ...

[Email Contact](#)



Lithium Solar Generator: \$150



Optimal configuration of 5G base station energy storage ...

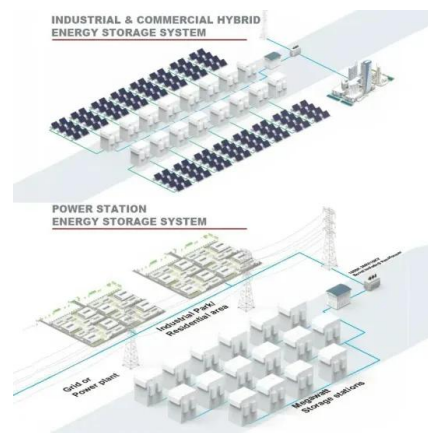
A multi-base station cooperative system composed of 5G acer stations was considered as the research object, and the outer goal was to maximize the net profit over the ...

[Email Contact](#)

Micro 5G base stations on street lamps key to

Source: Signify Street lamp poles with 5G micro base stations have been commercialized and are already shipping to markets in China. The ...

[Email Contact](#)



What is the Power Consumption of a 5G Base Station?

Network Sleep Modes: 5G base stations can power down partially during off-peak times. Unlike 4G, 5G stations can go into a deeper, longer-lasting sleep, saving energy when ...

[Email Contact](#)



Why does 5g base station consume so much power ...

During the night, 5G base stations do not open all functions on a daily basis, but only operate at the lowest threshold, and although 5G devices ...

[Email Contact](#)



Why Do AM Stations Power Down at Night? Understanding the ...

As night falls, many AM stations must adjust their operations. AM stations power down at night to prevent interference with other stations, adhering to Federal Communications ...

[Email Contact](#)

Front Line Data Study about 5G Power Consumption

The power consumption of a single 5G station is 2.5 to 3.5 times higher than that of a single 4G station. The main factor behind this increase in 5G power ...

[Email Contact](#)



Optimal configuration of 5G base station energy storage

Abstract: The high-energy consumption and high construction density of 5G base stations have greatly increased the demand for backup energy storage batteries. To maximize overall ...

[Email Contact](#)



5G

Verizon 5G base station utilizing Ericsson equipment in Springfield, Missouri, USA. 5G networks are cellular networks, [5] in which the service area is divided into small geographical areas ...

[Email Contact](#)



Can telecom lithium batteries be used in 5G telecom base stations?

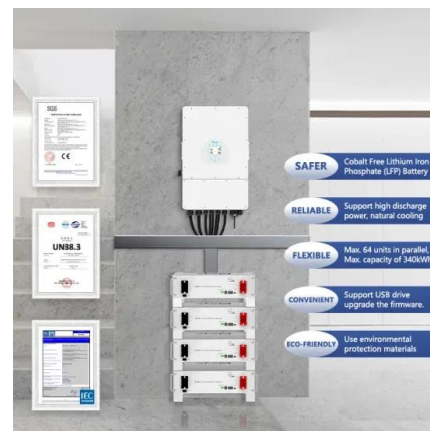
48V 51.2V 50Ah Floor Standing Backup Power: This floor - standing battery is suitable for smaller 5G base stations or those with limited space. It is easy to install and ...

[Email Contact](#)

5G towers are consuming a lot of energy, so China ...

At the beginning of August, a China Unicom branch announced that it would put some of its ZTE 5G base stations to sleep between 9pm and ...

[Email Contact](#)



5G towers: everything you need to know about 5G cell ...

Are 5G towers safe? Has Covid-19 stopped the roll-out of 5G? How do 5G cell towers operate? Here we demystify 5G's most controversial ...

[Email Contact](#)

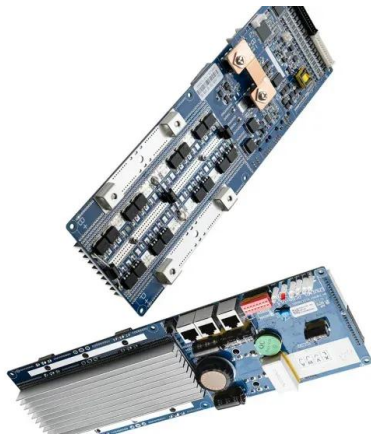
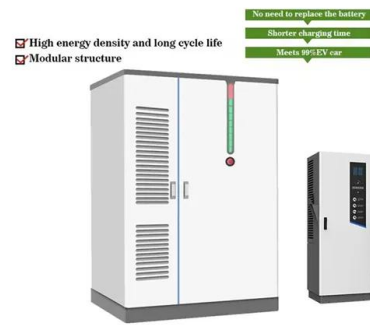




How much power does a 5G base station consume? It is rumored ...

The high power consumption of 5G base stations is also one of the reasons why 5G communication is difficult to spread widely. There are even rumors that 5G will be shut down ...

[Email Contact](#)



What is 5G Energy Consumption?

The 5G network is a dynamic system that consumes energy continually and responds to spikes in network activity. Over 70% of this energy is consumed by RAN antennas, radio units, and ...

[Email Contact](#)

Contact Us

For catalog requests, pricing, or partnerships, please visit:
<https://www.ogrzewanie-jelenia.pl>