

Double-glass modules requirements for solar panels





Overview

What is a double glass (Dual Glass) solar panel?

A double glass (Dual Glass) solar panel is a glass-glass module structure where a glass layer is used on the back of the modules instead of the traditional polymer backsheet. Double glass solar panels were originally heavy and expensive, but the lighter polymer backing panels gained most of the market share.

Can dual-glass solar panels increase solar energy production?

Installing dual-glass panels on a reflective surface, like a white rooftop, can increase solar energy production. That's because nowadays, dual-glass solar modules use bifacial cells throughout, and this power is generated from both sides of the panel instead of just one. The image shows the layers of the Vertex S+ dual glass modules.

Should you use dual-glass solar modules for rooftops?

Robustness and reliability are critical for solar professionals looking for resilience in solutions designed to provide a greener future. Thus, using dual-glass solar PV modules for rooftops offers the opportunity to increase the energy efficiency of commercial and residential buildings. What are dual-glass solar modules?

.

What are the benefits of double glazed solar panels?

Double-glazed solar panels, also known as dual glass solar panels, offer increased reliability, especially for large-scale photovoltaic projects. They provide better resistance to higher temperatures, humidity, and UV conditions and have better mechanical stability, which reduces the risk of microcracks during installation and operation.

Do dual-glass panels work for solar cell protection?



One of the reasons that dual-glass panels work well for solar cell protection is the degree of abrasion resistance. That makes dual-glass roof installations ideal for places that experience a lot of windy weather and other environmental impact.

Are bifacial solar panels PID-free?

A Double Glass (Dual Glass) Photovoltaic Solar Panel is PID-free as it does not allow the effect of the back foil on inductive degeneration. Most common configuration for Bifacial Solar Panels is double glass. Even when bifacial modules do not have Fire Class A, they are still much more fire-protective than standard back sheet modules.



Double-glass modules requirements for solar panels



[What Are The Requirements For Glass For Solar Panels](#)

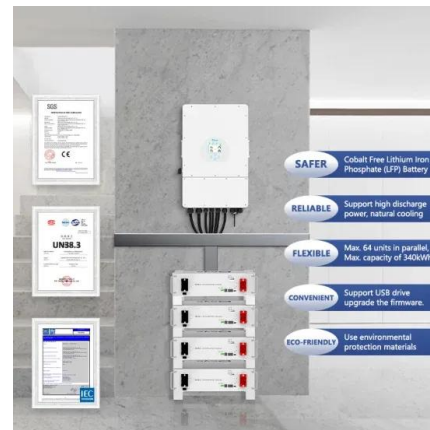
PV solar panel materials usually include glass, protective film, frame, and so on. Among them, tempered and non-tempered patterned glass and float glass will be used for glass. In terms of ...

[Email Contact](#)

[Why Dual-Glass is the best solar panel technology for ...](#)

Trina Solar double-glass solar panels come with a high fire protection rating compared to backsheet modules. That makes them suitable ...

[Email Contact](#)



[100MW Solar panel production line](#)

1. The assembly line is compatible with the production needs of double-glass and ordinary modules. It adopts a modular design. To facilitate installation and maintenance, each module ...

[Email Contact](#)



[What does double glass solar panel mean?., NenPower](#)

Double glass solar panels refer to a specific type of photovoltaic module designed with two layers of glass encasing the solar cells inside. 1. ...

[Email Contact](#)



[Why Dual-Glass is the best solar panel technology for ...](#)

Dual-glass structure has already become the standard for PV panels employed in ground-mounted, large-scale solar power plants. It's ...

[Email Contact](#)



[JA Solar PV Bifacial Double-glass Modules](#)

JA Solar modules can be mounted in landscape or portrait orientation. For the bifacial modules, in order to maintain the energy yield of module rear side, the distance between the bottom of ...

[Email Contact](#)



[The Bifaciality of Solar Panels: A Comprehensive ...](#)

Learn about bifacial solar panels and the concept of bifaciality, explore the different types of bifacial modules available in the market and their ...

[Email Contact](#)





[What are Double Glass Solar Panels?](#)

Double-glass solar modules are made up of two layers of tempered glass that cover both sides of the solar panel. As snow accumulates on a typical solar panel or people ...

[Email Contact](#)



[Why Dual-Glass is the best solar panel technology for rooftops](#)

Dual-glass structure has already become the standard for PV panels employed in ground-mounted, large-scale solar power plants. It's proven to provide the kind of reliability ...

[Email Contact](#)

[2025 Complete Guide to Glass-Glass Solar Panels: The Top ...](#)

Compared to traditional glass-backsheet modules, they offer greater durability and environmental resistance. The dual-glass structure provides enhanced protection for solar cells against ...

[Email Contact](#)



[Do BIPV solar panels support double-glass design?](#)

Building roofs in high-humidity areas (such as coastal cities): Double-glass structures provide higher sealing and corrosion resistance. Atrium corridors of schools or ...

[Email Contact](#)



[2025 Guide to Dual-Glass Solar Modules: When Premium Panels ...](#)

Complete guide to dual-glass solar panels: applications, benefits, costs & limitations. Learn when this premium technology provides genuine value vs conventional panels.

[Email Contact](#)



[What is the Double Glass \(Dual Glass\) Photovoltaic Solar Panel?](#)

What is the Double Glass Photovoltaic Solar Panel? Glass-glass module structures (Dual Glass or Double Glass) is a technology that uses a glass layer on the back of the ...

[Email Contact](#)

[2025 Complete Guide to Glass-Glass Solar Panels: ...](#)

Compared to traditional glass-backsheet modules, they offer greater durability and environmental resistance. The dual-glass structure provides enhanced ...

[Email Contact](#)



Double Glass Solar Panels

Double glass only allows them to receive light from the backside as well as the front side. There must be solar cells to convert the light received from the rear side.

[Email Contact](#)



[Installation_Manual_of_Bifacial_Module](#)

GENERAL INFORMATION This general manual provides important safety information relating to the installation, maintenance and handling of bifacial double glass solar modules (BiKu and ...

[Email Contact](#)



[Double the strengths, double the benefits](#)

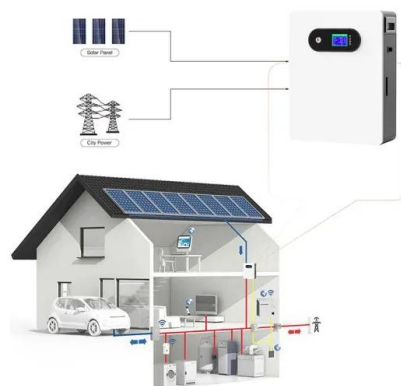
While double glass modules offer numerous benefits, it's essential to consider factors such as weight and installation requirements. Advancements in manufacturing have led ...

[Email Contact](#)

[Solar Panel in Dubai : Buy online solar panels at low price from](#)

Best solar panel in Dubai Powernsun is a global company serving as a hub for some of the reputed brands of solar panels across the world. We provide a full range of solar panels for ...

[Email Contact](#)



[What does double glass solar panel mean?_](#) [NenPower](#)

Traditional solar panels typically consist of a glass front coupled with a polymer back sheet, which offers some level of protection but is less ...

[Email Contact](#)



JINKOSOLAR PHOTOVOLTAIC MODULE

Front protective glass is utilized on the module. Broken solar module glass is an electrical safety hazard (may cause cannot be repaired and should be replaced immediately. To reduce the

...

[Email Contact](#)



[What is the Double Glass \(Dual Glass\) Photovoltaic ...](#)

What is the Double Glass Photovoltaic Solar Panel? Glass-glass module structures (Dual Glass or Double Glass) is a technology that uses a ...

[Email Contact](#)



[Do BIPV solar panels support double-glass design?](#)

BIPV is not just "power-generating glass" or "power-generating roof", it also represents an important trend in the development of green buildings, energy conservation and ...

[Email Contact](#)



[PV Without Surprises: Avoid Mistakes and Maximize Your ...](#)

The decision between double-glass and single-glass modules depends on multiple factors, including installation type, local climate conditions, and project goals.

[Email Contact](#)





[What does double glass solar panel mean?.](#) [NenPower](#)

Traditional solar panels typically consist of a glass front coupled with a polymer back sheet, which offers some level of protection but is less durable than glass. The dual-glass ...

[Email Contact](#)



[What are Double Glass Solar Panels?](#)

JA Solar modules can be mounted in landscape or portrait orientation. For the bifacial modules, in order to maintain the energy yield of module rear side, the distance between the bottom of ...

[Email Contact](#)

[Bifacial Mono PERC Double Glass Module: A Game-Changer for ...](#)

Conclusion The Bifacial Mono PERC Double Glass Module is not just a technological upgrade; it is the future of solar energy in India. With higher efficiency, durability, ...

[Email Contact](#)



[Double Glass Solar Panel Thickness Guide: Find Your Perfect ...](#)

Compare double glass solar panel thickness configurations for international projects. Includes custom small-format options under 200W for specialized global applications.

[Email Contact](#)



Contact Us

For catalog requests, pricing, or partnerships, please visit:
<https://www.ogrzewanie-jelenia.pl>