

Energy storage battery charging temperature range





Overview

There's no guesswork here — the recommended lithium-ion battery operating temperature range is -20°C to 60°C for discharge and 0°C to 45°C for charging, depending on the battery chemistry and quality.



Energy storage battery charging temperature range



[LiFePO4 Temperature Range: Discharging, Charging and Storage](#)

Learn the temperature range for LiFePO4 batteries during discharging, charging, and storage. Ensure optimal performance and longevity with our expert insights!

[Email Contact](#)

[Seasonal Strategy: Adjust SOC Charge Range for Heat and Cold](#)

4 days ago· Your energy storage system is a dynamic asset, and its performance is closely tied to the environment. A 'set it and forget it' approach to your battery's State of Charge (SOC)

...

[Email Contact](#)

Warranty
10 years

LiFePO₄

Intelligent BMS

Wide Temp:
-20°C to 55°C



[LiFePO4 Battery Temp Guide: Charge, Store, & Use](#)

Learn the ideal temperature for LiFePO4 battery charging, discharging, and storage. Help you avoid cold damage and heat aging, maximizing battery life.

[Email Contact](#)



[LiFePO4 Temperature Range -- Safe Operation from Charging to Storage](#)

In this article, we will explore what the LiFePO4 temperature range means, how temperature affects battery performance, and how to properly charge, discharge, and store the ...



[Email Contact](#)



[LiFePO4 Temperature Range -- Safe Operation from Charging ...](#)

In this article, we will explore what the LiFePO4 temperature range means, how temperature affects battery performance, and how to properly charge, discharge, and store the ...

[Email Contact](#)

[How Do Temperature Ranges Affect Charging and Discharging?](#)

Temperature ranges affect charging and discharging efficiency; extreme temperatures can lead to reduced performance or damage. Optimal charging typically occurs ...

[Email Contact](#)



[The Definitive Guide to Lithium Battery Temperature ...](#)

Operating within the recommended range of 15°C to 25°C (59°F to 77°F) ensures efficient energy storage and release. Following storage guidelines and ...

[Email Contact](#)

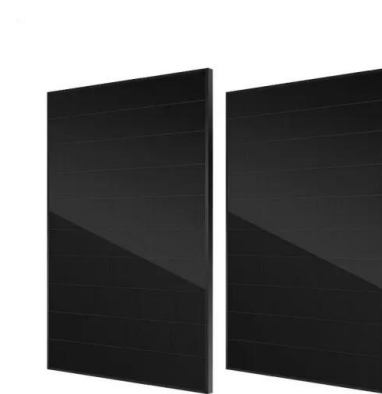




[What are the specific temperature ranges that most ...](#)

Maintaining battery temperature within roughly 15°C to 35°C is crucial for maximizing EV battery efficiency, charge speed, and longevity. ...

[Email Contact](#)



- ✓ LIQUID/AIR COOLING
- ✓ PROTECTION IP54/IP55
- ✓ PCS EMS
- ✓ BATTERY /6000 CYCLES

Charging Temperature

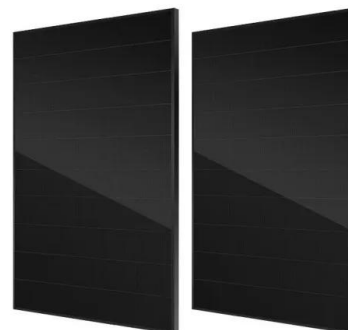
Charging temperature is defined as the required temperature level that facilitates the dissociation of the sorbent and sorbate during the charging process in energy storage systems, with ...

[Email Contact](#)

[Your Useful Guide to Li-ion Battery Operating ...](#)

Part 1. Ideal lithium-ion battery operating temperature range Li-ion batteries function optimally within a specific temperature range. The ideal ...

[Email Contact](#)



[All-temperature area battery application mechanism,...](#)

Further applications of electric vehicles (EVs) and energy storage stations are limited because of the thermal sensitivity, volatility, and poor durability of lithium-ion batteries ...

[Email Contact](#)



[Best Battery Temperature \[Updated On: September 2025\]](#)

11 hours ago· This range allows for efficient energy transfer and minimizes the risk of damage to the battery's components during the charging process. According to the Battery University, a ...

[Email Contact](#)



[High-power charging strategy within key SOC ranges based on ...](#)

The characteristic of this strategy is to segment and combine different high powers, and match Stage1 with higher charging power during the initial stage of low battery ...

[Email Contact](#)

[LiFePO4 Temperature Range: Discharging, Charging ...](#)

Learn the temperature range for LiFePO4 batteries during discharging, charging, and storage. Ensure optimal performance and longevity with our expert insights!

[Email Contact](#)

DETAILS AND PACKAGING



[Battery and Temperature: Factors Impacting Battery Life](#)

In conclusion, maintaining the battery temperature within the recommended range during charging is vital for optimal energy storage and longevity. By taking necessary ...

[Email Contact](#)





[Charging Temperature: Why Battery Datasheets Often Miss ...](#)

Charging temperature for batteries: When you read a lithium-ion cell datasheet, you'll usually find a line that states: "Operating Temperature: -20°C to 60°C." Most people take ...

[Email Contact](#)



[Lithium Battery Temperature Ranges: Operation & Storage](#)

Learn optimal lithium battery temperature ranges for use and storage. Understand effects on performance, efficiency, lifespan, and safety.

[Email Contact](#)



[A Comprehensive Guide on LifePo4 Battery Operation Temperature Range](#)

Optimal Temperature Range: The ideal working temperature range for a LiFePO4 battery is between 0°C and 45°C (32°F to 113°F). The batteries perform at peak efficiency ...

[Email Contact](#)



[A Comprehensive Guide on LifePo4 Battery Operation...](#)

Optimal Temperature Range: The ideal working temperature range for a LiFePO4 battery is between 0°C and 45°C (32°F to 113°F). The ...

[Email Contact](#)





Charging Temperature: Why Battery Datasheets Often Miss Critical Charge

Charging temperature for batteries: When you read a lithium-ion cell datasheet, you'll usually find a line that states: "Operating Temperature: -20°C to 60°C." Most people take ...

[Email Contact](#)

CE UN38.3 MSDS



[What is the charging temperature of the energy storage battery?](#)

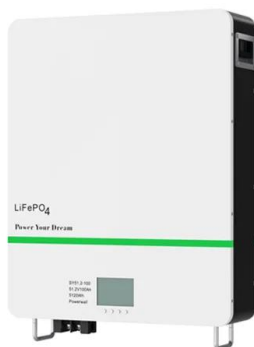
Culminating insights into the charging temperature of energy storage batteries highlight its paramount importance for both functionality and longevity. Energy storage ...

[Email Contact](#)

[What is the charging temperature of the energy ...](#)

Culminating insights into the charging temperature of energy storage batteries highlight its paramount importance for both functionality and ...

[Email Contact](#)



[Li-Ion Battery Safe Temperature: Everything You Should Know](#)

Discharging below -20°C or charging above 45°C can slash capacity and permanently damage cells. Most lithium-ion batteries operate safely between -30°C and 55°C, ...

[Email Contact](#)



[What Are the Optimal Temperature Ranges for Charging ...](#)

Storing LiFePO4 batteries between -10°C and 50°C (14°F to 122°F) preserves capacity and prevents degradation. Extreme storage temperatures can cause irreversible ...

[Email Contact](#)



[Get the Best Lifepo4 Battery Temperature Range for You](#)

In general, the best lifepo4 battery temperature range is -20?~60?, to optimize performance and maximize service life. Never charge ...

[Email Contact](#)



[The Definitive Guide to Lithium Battery Temperature Range](#)

Operating within the recommended range of 15°C to 25°C (59°F to 77°F) ensures efficient energy storage and release. Following storage guidelines and effective temperature management ...

[Email Contact](#)



[Battery Energy Storage: Optimizing Grid Efficiency](#)

Introduction Battery Energy Storage Systems (BESS) are a transformative technology that enhances the efficiency and reliability of energy grids by ...

[Email Contact](#)



Contact Us

For catalog requests, pricing, or partnerships, please visit:
<https://www.ogrzewanie-jelenia.pl>