

How big of an inverter should I use for a 60W





Overview

Before we go any further, we highly recommend that you choose a pure sine wave inverter. This type of inverter delivers high-quality electricity, similar to your utility company. This way, none of your appliances run the risk of being damaged. Now, when it comes to sizing your inverter, you always need to check.

We have summarized the appliances that inverters from 300W to 3000W can run depending on their rated maximum power. Note to our readers: Use the above formula to determine.

What size inverter do I Need?

Inverters come in different sizes starting from as little as 125 watts. The typical inverter sizes used for residential and commercial applications are between 1 and 10kW with 3 and 5kW sizes being the most common. With such an array of options, how do you find the right size for you?

An inverter works best when close to its capacity.

What are the different solar inverter sizes?

Solar generators range in size from small generators for short camping trips to large off-grid power systems for a boat or house. Consequently, inverter sizes vary greatly. During our research, we discovered that most inverters range in size from 300 watts up to over 3000 watts. In this article, we guide you through the different inverter sizes.

How to calculate inverter size?

Using the Inverter Size Calculator is quick and easy. You'll need three inputs: Total Wattage (W): This is the total power consumption of all the appliances or devices you plan to run through the inverter. Safety Factor: A multiplier to ensure some buffer above your actual power requirement. Typically ranges from 1.1 to 1.5.

How much power does an inverter need?



The continuous power requirement is actually 2250 but when sizing an inverter, you have to plan for the start up so the inverter can handle it. Third, you need to decide how long you want to run 2250 watts. Let's say you would like to power these items for an eight-hour period.

How to choose the right inverter power?

Avoids Overloading: By selecting the right inverter power with a safety margin, you prevent overtaxing the system and potential breakdowns. To guarantee a reliable power supply, it is essential to align the continuous output of the inverter with or surpass the total wattage requirements of all connected devices.

What size cable do I need for a 3500W inverter?

For inverters rated up to 3500W, the cable size should be 1/0 AWG, sufficient to handle the startup and continuous current required. Another consideration is the inline fuse, as this will protect both sides of the system in the event of a shortage in the system. To ascertain the fuse you need, divide the AC wattage by the DC Voltage.



How big of an inverter should I use for a 60W



[What Size Inverter You Need \(Calculations + Battery\)](#)

Choosing an inverter can be tricky when working out all the various factors involved in this calculation. You want to be sure you have enough ...

[Email Contact](#)

[What Size Inverter To Run A Fridge? \(1000 Watt.](#)

...

Refrigerator Surge wattage Inverter input voltage should match the battery volts What Size Inverter To Run A Fridge? in short, you would need ...



[Email Contact](#)



[What Size Inverter Do I Need for Camping? \(Including ...](#)

Discover the perfect inverter size for your next camping adventure. Learn how to calculate your power needs, choose between pure and modified sine wave ...

[Email Contact](#)

[What Size Solar Inverter Do I Need? Experts Break It Down](#)

Picking the right solar inverter isn't rocket science, but it's not a wild guess either. Match your inverter size to your solar panel output, leave a little headroom, and don't cheap ...



[Email Contact](#)



Deye Official Store

10 years
warranty

[Inverter Size Chat: What Size Inverter Do I Need?](#)

That's why I've put together a handy inverter size chart in order for you to quickly find out what size inverter is best for your needs. We'll start by going through the basic considerations, use ...

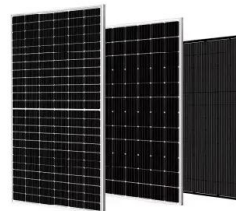
[Email Contact](#)



[What Size Power Inverter Is Needed for a House \[Full ...\]](#)

In general, a 3000W to 5000W inverter works well for most homes, but the exact size depends on factors like household appliances, total power ...

[Email Contact](#)



[What Size Power Inverter Is Needed for a House \[Full Guide\]](#)

In general, a 3000W to 5000W inverter works well for most homes, but the exact size depends on factors like household appliances, total power consumption, and battery ...

[Email Contact](#)



[How To Size an Inverter: Solar Inverter Sizing Explained](#)

When sizing an inverter, calculate the total wattage needed and understand surge vs. continuous power. Choose the right size with a 20% ...

[Email Contact](#)



[How To Size an Inverter: Solar Inverter Sizing Explained](#)

When sizing an inverter, calculate the total wattage needed and understand surge vs. continuous power. Choose the right size with a 20% safety margin. Factor in simultaneous ...

[Email Contact](#)



[What Size Inverter Do I Need for My RV or Camper?](#)

Visit The Inverter Store for all your informational needs on inverters, including how to calculate just what size inverter you need for your RV, camper or boat.

[Email Contact](#)



Commercial and Industrial ESS

Air Cooling / Liquid Cooling

- Budget Friendly Solution
- Renewable Energy Integration
- Modular Design for Flexible Expansion



[12 Volt Battery Run Time Calculator](#)

Do you have a 12v device you need to power but don't know what 12-volt battery you need? For those running a continuous 12-volt load, an adequately sized deep-cycle ...

[Email Contact](#)



[What Size Inverter Do You Need for a 200 Watt Solar ...](#)

Discover the optimal inverter size for your 200-watt solar panel system with our comprehensive guide, ensuring efficient energy conversion ...

[Email Contact](#)



[What size battery does a 1000 watt inverter need and ...](#)

According to statistics, the number of people using inverters is growing. Accordingly, in order to better choose and use them, we also need to ...

[Email Contact](#)

[How big an inverter should I use for a 300w solar panel](#)

Inverter Size Needed To Run A TV And Lights. Generally, a 300-watt inverter should be enough to run your TV and household lights. More specifically, a 300W inverter is big enough to run an ...

[Email Contact](#)



[What size inverter do I need for a refrigerator?](#)

Inverter Wattage ratings required to run a refrigerator based on its size (capacity). These estimates should give you a pretty good idea of the inverter size you need, but I still ...

[Email Contact](#)



[How To Size A Solar Inverter in 3 Easy Steps](#)

In this guide, we share 3 easy steps on how to size a solar inverter correctly. We explain the key concepts that determine solar inverter sizing including your power needs, the type and number ...

[Email Contact](#)



[How to Choose the Right Size Solar Inverter: Step-by-Step with ...](#)

This guide walks you through calculating inverter size based on panel capacity, power usage, and safety margins. We use real examples from installations in Texas and ...

[Email Contact](#)

[How Do I Calculate What Size Inverter I Need?](#)

Having the right size inverter is vital for operating your appliances and devices properly. An undersized inverter will overload and potentially fail ...

[Email Contact](#)



[Inverter Size Chat: What Size Inverter Do I Need?](#)

That's why I've put together a handy inverter size chart in order for you to quickly find out what size inverter is best for your needs. We'll start by going through ...

[Email Contact](#)



Inverter Size Calculator

Inverter Size (W) = (Total Wattage × Safety Factor) ÷ Inverter Efficiency. This ensures that the inverter can handle both the load and the efficiency losses. Let's walk through a simple ...

[Email Contact](#)



[What size inverter can you run off a car battery?](#)

A typical 12-volt car battery can safely support an inverter ranging from about 150 watts up to 600 watts for regular use without harming the battery. While it is technically ...

[Email Contact](#)

[How To Size A Solar Inverter in 3 Easy Steps](#)

Picking the right solar inverter isn't rocket science, but it's not a wild guess either. Match your inverter size to your solar panel output, leave a little ...

[Email Contact](#)



[How to Size an Inverter and UPS for Home Appliances?](#)

How Much Watts Inverter or UPS Do You Need for Home Appliances? Sizing a UPS. How to Calculate and Choose the Right Size of Inverter?

[Email Contact](#)



[What Size Inverter You Need \(Calculations + Battery\)](#)

Choosing an inverter can be tricky when working out all the various factors involved in this calculation. You want to be sure you have enough power to run all the different ...

[Email Contact](#)



[What size inverter do you need for a 100ah battery?](#)

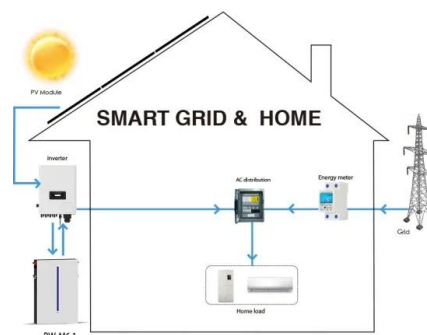
What size inverter for a 100Ah battery? For appliances that use a relatively low amount of power, such as laptops, lights, TVs, and small fridges, a 500W inverter will likely do ...

[Email Contact](#)

[How big an inverter should I use for a 120kw photovoltaic panel](#)

To calculate the ideal inverter size for your solar PV system, you should consider the total wattage of your solar panels and the specific conditions of your installation site. The ...

[Email Contact](#)



Contact Us

For catalog requests, pricing, or partnerships, please visit:
<https://www.ogrzewanie-jelenia.pl>