

# How many degrees of outdoor power supply is sufficient



## Efficient Higher Revenue

- Max. Efficiency 97.5%
- Max. PV Input Voltage 600V
- 150% Peak Output Power
- 2 MPP Trackers, 150% DC Input Oversizing
- Max. PV Input Current 16A, Compatible with High Power Modules



## Intelligent Simple O&M

- IP66 Protection Degree: support outdoor installation
- Smart I-V Curve Diagnosis Function: locate PV string faults accurately and automatically detect faults
- DC & AC Type II SPD: prevent lightning damage
- Battery Reverse Connection Protection



## Flexible Abundant Configuration

- Plug & Play, EPS Switching Under 10ms
- Compatible with Lead-acid and Lithium Batteries
- Max. 6 units Inverters Parallel
- AFCI Function (Optional): when an arc-fault is detected the inverter immediately stops operation



## Overview

---

Why should a power supply have a wide operating temperature range?

Depending on the application, a power supply with a wide operating temperature range may provide better reliability and a longer operating lifetime, prevent the need for a cooling fan or other special design consideration for thermal management, and reduce the overall cost of your system.

What temperature should a commercial power supply be rated?

Typical commercial power supplies are specified to support their full rated load over an ambient temperature range from zero or minus 25 degrees Celsius to around 50 degrees Celsius, and they may derate to 50% load at 70 degrees Celsius.

What does it mean if a power supply exceeds standard operating temperatures?

Exceeding standard operating temperatures means running your power supply when the ambient temperature falls outside the operating temperatures for which it is rated. Sometimes this happens — you can't predict every possible usage scenario, and you can't always guarantee a stable environment.

What is a good ambient temperature for a power supply?

Some applications may require ambient operating temperatures as low as -40 degrees Celsius and as high as +85 degrees Celsius, or an even wider range. A number of factors can influence the ambient temperature that a power supply is subjected to in a given application, including the following:

How do I choose a power supply?

When you're selecting a power supply for your system, you'll need to consider its ambient operating temperature range. Running your power supply within



its specified operating temperatures are essential for optimizing its performance, preventing overheating and breakdowns, and extending its lifespan.

Why is running a power supply at a specified temperature important?

Running your power supply within its specified operating temperatures is essential for optimizing its performance, preventing overheating and breakdowns, and extending its lifespan.



## How many degrees of outdoor power supply is sufficient

---



### [How to convert portable outdoor power supply](#)

Many people need to know how long it will last, and how much power can carry what devices, before buying an off-customer storage power supply. In order to ensure ...

[Email Contact](#)

### [Working Clearances, based on the 2020 NEC](#)

The working space must be of sufficient width, depth, and height to permit equipment doors to open at least 90 degrees. The height of the working space must be clear and extend from the ...

[Email Contact](#)



### [How much solar outdoor power supply is needed , NenPower](#)

To determine the necessary solar outdoor power supply, several factors must be evaluated, including 1. energy consumption requirements, 2. location and sun exposure, 3. ...

[Email Contact](#)



### [National Electrical Code \(NEC\) Rules for Outdoor Wiring](#)

How to choose an outdoor power supply? The only purpose of this article is to save your time with the data I have compiled and to provide you ...



[Email Contact](#)



### [How Cool Should the Air Be From a Heat Pump?](#)

Summer heat can be miserable in many parts of the world. When your heat pump works to cool your house down, it pushes out air about 15 to ...

[Email Contact](#)



### [Can an AC be designed to cool more than 20 degrees below](#)

i think there is a misunderstanding about the 20 degree idea. when an AC system is working at peak, it can lower the temperature of the incoming air (return air) 20 degrees. but that's ...

[Email Contact](#)



### [Maximizing Outdoor Power Supply How Many Degrees of...](#)

Ever wondered how much electricity your outdoor adventures really need? Whether you're camping off-grid or hosting an outdoor event, understanding your power requirements - often ...

[Email Contact](#)



### [Right Outdoor Power Configuration: Choose the Best Setup](#)

Find the right outdoor power configuration for your needs. Learn about amperage, voltage, and safety to ensure efficient power distribution.

[Email Contact](#)



### ["AC is designed to only keep it 20 degrees cooler then ...](#)

A properly sized, reasonably modern unit, intelligently installed in a reasonably insulated building should maintain a comfortable 72 to 75 degrees inside ...

[Email Contact](#)

### [How Many Degrees Can an AC Cool?](#)

An air conditioner can cool your indoor air from 15 to 35 degrees below the outside temperature. This is an average range. A few systems (if you live in Arizona or southern ...

[Email Contact](#)



### [What Is the Cooling Limit of My Air Conditioner?](#)

When the temperature soars in the summer, how much can your air conditioner cool? Your AC has limits. No matter where you set the thermostat, ...

[Email Contact](#)



## [How to use solar outdoor power supply . NenPower](#)

To effectively utilize a solar outdoor power supply, understanding its key aspects is essential. 1. Identify your power needs, 2. Choose an ...

[Email Contact](#)



## ["AC is designed to only keep it 20 degrees cooler then outside"](#)

A properly sized, reasonably modern unit, intelligently installed in a reasonably insulated building should maintain a comfortable 72 to 75 degrees inside during outdoor ...

[Email Contact](#)

## [National Electrical Code \(NEC\) Rules for Outdoor Wiring](#)

Homes must have at least one outdoor receptacle at the front and rear of the house. They must be readily accessible from the ground and positioned no more than 6 1/2 feet above ...

[Email Contact](#)



**Outdoor Cabinet BESS**  
50 kWh/ 500 kWh Battery Storage System  
Industrial and Commercial Energy Storage



- All in One**  
Integrating battery packs
- High-capacity**  
50-500kWh
- Degree of Protection**  
IP54
- Operating Temperature Range**  
-20~60°C(Derating above 50 °C)
- Intelligent Integration**  
Integrated photovoltaic storage cabinet
- Rated AC Power**  
50-100kW
- Altitude**  
3000m(>3000m derating)

## [Choosing the Right Cooling Capacity for your Air- Conditioner](#)

However, a smaller total cooling capacity may be sufficient if all the room units are not turned on at the same time. For a more detailed assessment of the cooling capacity required, please ...

[Email Contact](#)





### [Ultimate guide: heat pump temperature limits - how hot does it get?](#)

Heat pumps have emerged as energy-efficient heating and cooling solutions, but one question that often arises is: how hot does a heat pump get? Understanding the thermal ...

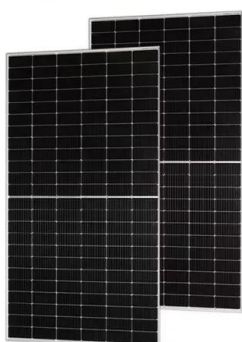
[Email Contact](#)



### [How to choose an outdoor power supply?](#)

How to choose an outdoor power supply? The only purpose of this article is to save your time with the data I have compiled and to provide you with a comprehensive ...

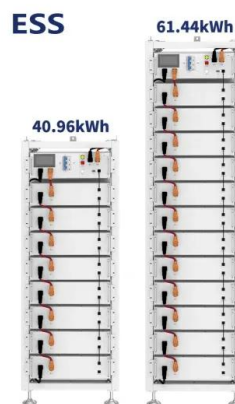
[Email Contact](#)



### [How to choose an outdoor power supply?](#)

To summarize briefly: 1, the power is relatively small outdoor power supply (300W or less), more to see mAh, because more care is: how many times can the power ...

[Email Contact](#)



### [The Benefits of Wide Operating Temperature Power Supplies](#)

Choosing a power supply with a wide operating temperature range can provide many advantages, especially for applications in demanding environments, such as outdoors, in sealed ...

[Email Contact](#)



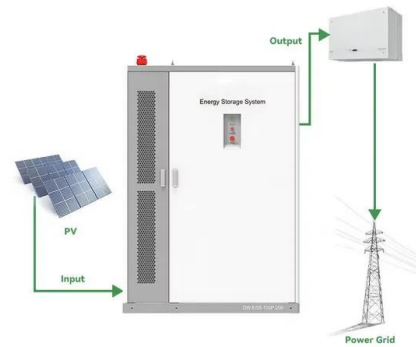




### [How to choose an outdoor power supply?](#)

The temperature control of the whole power supply is very good, and the AC output of 220V is also very stable, and it is a pure sine wave, so there is no need to worry about ...

[Email Contact](#)



### [65 degree rule for R-410A central AC units?](#)

I've been contacted by a Client about a home warranty claim on a central AC unit that did not start when they moved into a house I inspected this winter, and could not run it ...

[Email Contact](#)

### [The Benefits of Wide Operating Temperature Power ...](#)

Choosing a power supply with a wide operating temperature range can provide many advantages, especially for applications in demanding environments, ...

[Email Contact](#)



### [How Many BTUs Do I Need For My Patio Heater?](#)

How many BTUs do you need for your patio heater? If you answered 1,000, you are wrong! If you answered 2,000, you are wrong again! A patio heater should be sized ...

[Email Contact](#)



## Contact Us

---

For catalog requests, pricing, or partnerships, please visit:  
<https://www.ogrzewanie-jelenia.pl>