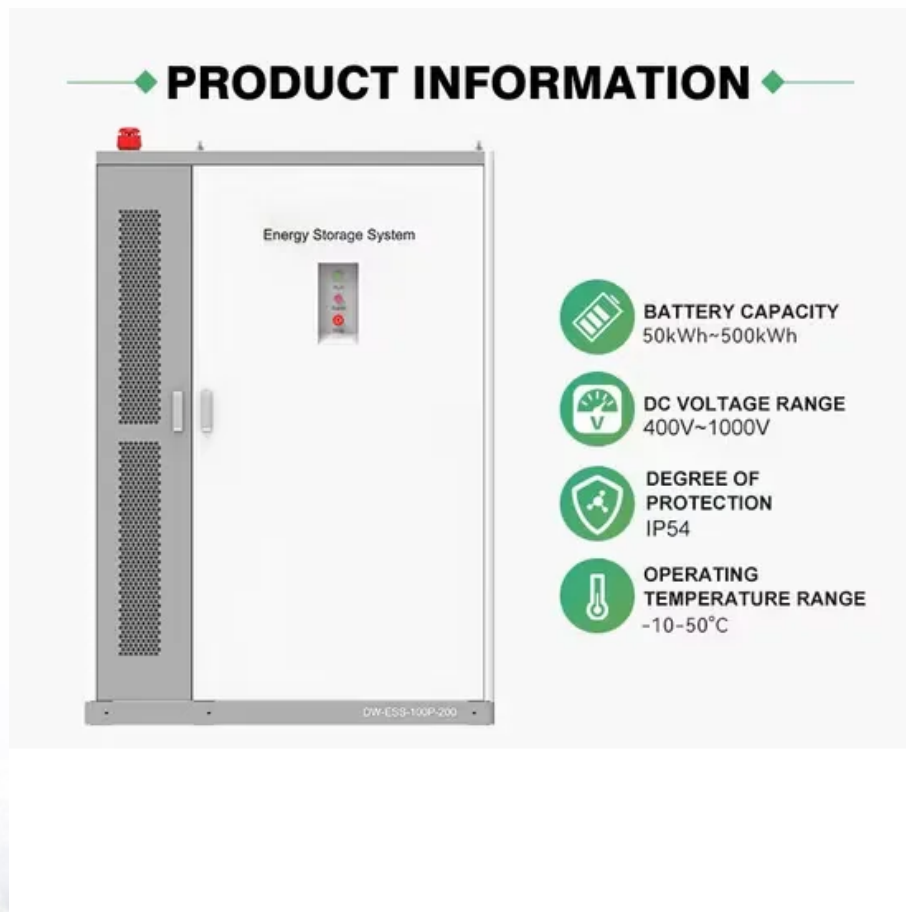


How many watts of solar energy can be installed in 30 square meters





Overview

Generally, an area of approximately 30 square meters could yield around 4,500 to 7,500 watts of electricity, subject to variations based on technology, location, and installation parameters. High-efficiency panels and installation in optimal sunlight environments can push these numbers even higher. What is solar panel watts per square meter (W/M)?

Solar panel watts per square meter (W/m) measures the power output of a solar panel based on its size. Compare solar panels to see which generates most electricity per square meter. A higher W/m value means a solar panel produces more power from a given area. This can help you determine how many solar panels you need for your energy needs.

How many watts per square meter is 20 solar panels?

For instance, if the combined size of the 20 panels is 30 square meters, the watts per square meter would be 200 (6,000 watts / 30 square meters). By calculating the watts per meter square, individuals can assess the efficiency of their domestic solar panel systems and compare it with the performance of other systems.

How many Watts Does a solar panel produce per sq ft?

In fact, by averaging different wattages and dimensions of solar panels, we can see that an average solar panel will produce 17.25 watts per sq ft of roof area. By understanding all these 3 key inputs, we can write the equation for theoretically maximum solar rooftop solar system size like this:.

What is watts per square meter?

Watts per square meter is a measurement that quantifies the power output of solar panels relative to their surface area. It indicates how much electricity a solar panel produces per space unit, allowing for comparisons between different panel types and sizes.

What is a solar power per square meter calculator?



It also includes wiring, inverter, charge controller, and battery bank (if used). A solar power per square meter calculator takes details regarding these factors and then gives the accurate output generated by the solar panel per square meter. After this, it's time to learn about solar panel output calculators.

How many solar panels do I Need?

If each of these viable square feet generates 17.25 watts of electricity, the combined 1500 sq ft will be able to generate more than 25kW per peak sun hour (25.875kW, to be exact). To construct such a system, you will have to either place 258 100-watt solar panels, 86 300-watt solar panels, or 64 400-watt solar panels on your roof.



How many watts of solar energy can be installed in 30 square meter



[Solar Panel Wattage Explained: How Many Watts Do You Need?](#)

On average, a solar panel produces around 150 to 200 watts per square meter. This can vary due to: Example: A 1.7 m² panel with 20% efficiency will produce about 340W in full ...

[Email Contact](#)

[Solar Panel Calculator: How Many Do You Need?](#)

We'll use your energy use in Watt-hours to determine how many Watts of solar panels you need. Here's the solar panel calculation: That is all it takes to determine how many ...

[Email Contact](#)



[How much solar power can my roof generate?](#)

First, you need to determine how many solar panels you can fit on your roof. Assuming all of the roof space you've got is usable for solar, that's 97 panels (1,700 square ...

[Email Contact](#)

[Solar Power per Square Meter Calculator](#)

A solar power per square meter calculator takes details regarding these factors and then gives the accurate output generated by the solar panel per square meter.

[Email Contact](#)



[How many watts can one square meter of solar energy produce?](#)

1. One square meter of solar energy can generate approximately 150 to 200 watts under ideal conditions, conditions that include optimal positioning relative to the sun, high ...

[Email Contact](#)



[Solar Power per Square Meter Calculator](#)

To measure this efficiency, use solar panel Watts per square meter (W/m). This metric shows how much power a solar panel produces per square meter of ...

[Email Contact](#)



[Calculate Rooftop Area for Solar Panel Installation](#)

Navitas Solar offers a guide on calculate rooftop area for solar panels, ensuring efficient space usage and optimal solar energy generation.

[Email Contact](#)

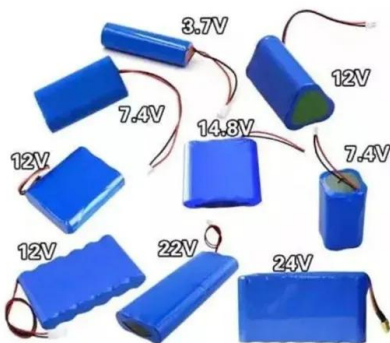
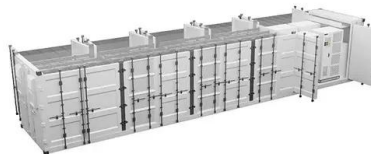




PVWatts Calculator

NREL's PVWatts ® Calculator Estimates the energy production of grid-connected photovoltaic (PV) energy systems throughout the world. It allows homeowners, small building owners, ...

[Email Contact](#)



[Total Area Required for Solar Panel Installation Calculator](#)

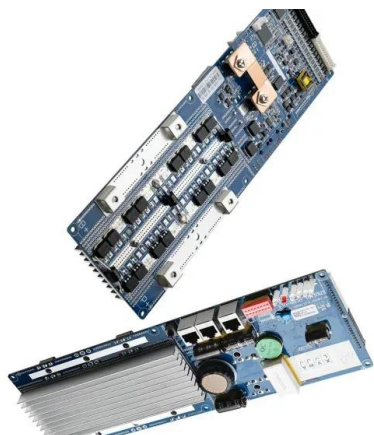
Calculate the total area needed for your solar panel installation quickly and accurately with our easy-to-use solar panel area calculator.

[Email Contact](#)

Solar Panel Calculator

It takes into account factors such as the daily energy needs of a household or business, the efficiency of the solar panels, the average peak sun hours per day in the location where the ...

[Email Contact](#)



[Solar Panel Wattage Explained: How Many Watts Do You Need?](#)

Confused about solar panel wattage? Learn how many watts you need, how solar output works, and how to calculate the right solar setup for your home, RV, or cabin.

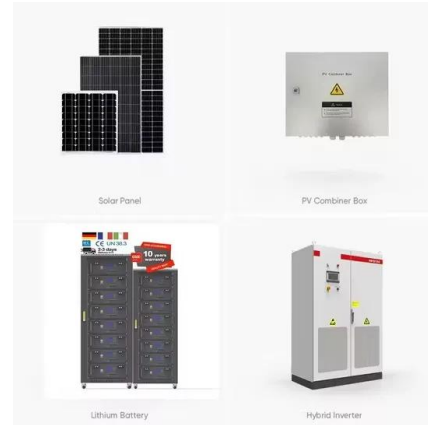
[Email Contact](#)



[How many watts are there for a 30-square-meter solar panel?](#)

A 30-square-meter solar panel generates approximately between 4,500 to 7,500 watts of electricity, depending on various factors, such as the solar panel's efficiency, the ...

[Email Contact](#)



[How to Understand Solar Panel Watts Per Square Meter](#)

Watts per square meter is a metric used to measure the power output of solar panels relative to their surface area. It represents a solar panel's electricity per square meter ...

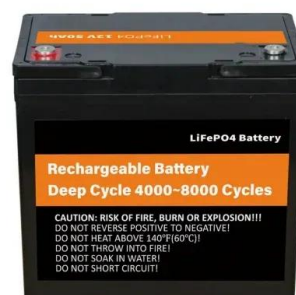
[Email Contact](#)



[How to Understand Solar Panel Watts Per Square Meter](#)

Watts per square meter is a metric used to measure the power output of solar panels relative to their surface area. It represents a solar ...

[Email Contact](#)



[Calculation of total area required for solar panel installation](#)

Panel Wattage (P_{panel}) Panel wattage is the power output capacity of a single solar panel under standard test conditions. It is specified by the manufacturer and can vary ...

[Email Contact](#)



[Solar Panel Calculator: How Many Do You Need?](#)

We'll use your energy use in Watt-hours to determine how many Watts of solar panels you need. Here's the solar panel calculation: That is all it ...

[Email Contact](#)



[How to Calculate the Surface Area Required by Solar ...](#)

Lets assume that you want to install 10 solar panels rated at 100 Watts each and having a conversion efficiency of 18%. The total power output ...

[Email Contact](#)



[Solar Panel Wattage Explained: How Many Watts Do ...](#)

On average, a solar panel produces around 150 to 200 watts per square meter. This can vary due to: Example: A 1.7 m² panel with 20% ...

[Email Contact](#)



[Solar Panel Sizes and Wattage: Everything You Need ...](#)

They are 30% larger than residential ones and normally measure around 2.1 meters tall and 1.1 meters wide, covering an area of about 2.3 ...

[Email Contact](#)



[Total Area Required for Solar Panel Installation ...](#)

Calculate the total area needed for your solar panel installation quickly and accurately with our easy-to-use solar panel area calculator.

[Email Contact](#)



- ☒ TELECOM CABINET
- ☒ BRAND NEW ORIGINAL
- ☒ HIGH-EFFICIENCY



[Solar Rooftop Calculator: How Many Solar Panels Can](#)

We have calculated how many of either 100-watt, 300-watt, or 400-watt solar panels you can put on roofs ranging from very little 300 sq ft roof to huge 5,000 sq ft roof, and summarized the ...

[Email Contact](#)

[Solar Rooftop Calculator: How Many Solar Panels ...](#)

We have calculated how many of either 100-watt, 300-watt, or 400-watt solar panels you can put on roofs ranging from very little 300 sq ft roof to huge ...

[Email Contact](#)



[Solar Panel Calculator , Lowe's](#)

Here's the formula for determining solar power. You can plug in your own numbers and use it as a solar power calculator. To calculate the number of solar panels your home ...

[Email Contact](#)



[Solar Panel Watts Per Square Meter Explained](#)

To measure this efficiency, use solar panel Watts per square meter (W/m). This metric shows how much power a solar panel produces per square meter of surface area under standard ...

[Email Contact](#)



Contact Us

For catalog requests, pricing, or partnerships, please visit:
<https://www.ogrzewanie-jelenia.pl>