

How to change the power supply of the base station module





Overview

What is a power supply module?

A Power Supply Module is used in a base station/repeater with a Power Amplifier Module (e.g. rated at 100 W output power). The model generates the +5.1 V, +14.2 V, and +28.6 V operating voltages for the base station/repeater modules. These modules have power factor correction and include a connection for battery backup.

What should I do if my Base Station is not connected to AC?

If you are seeing a "Power Outage" warning, you'll want to check if there is power at your location, and that the Base Station is properly connected to AC. But if you ever need to replace your Base Station's batteries, you can find a step-by-step guide [here](#).

How do you replace a battery in a base station?

To replace batteries in a SimpliSafe base station, rotate the base counterclockwise (CCW) to remove it, then remove the batteries and replace them while ensuring the (-) and (+) orientation. When disposing of NiMH batteries, they should be recycled.

What type of batteries are used in the base station?

Inside the bottom of the base station are QTY (4) AA nickel-metal hydride rechargeable batteries (abbreviated NiMH or Ni-MH). Note, being RECHARGEABLE, there is a good chance that if you just keep the power on for several hours, they will be recharged.

How do I unlock the base station?

To unlock the base station and access the batteries, first remove the power cord to reveal a single screw. Unscrew it, and the bottom of the base station will turn freely and unlock. You should see 4AA batteries.



What is the power source of the SimpliSafe base station?

The SimpliSafe base station is powered by batteries. The batteries supplied from SimpliSafe are rated at 1000mAh capacity.



How to change the power supply of the base station module



what kind of power supplies do you guys use for base station

13.8v and 30a is fairly standard for a shack. That radio should run from 11.73v to 15.87v but at 12v and 5 amps, you'll probably put too much demand on that little power supply. I use a switching ...

[Email Contact](#)

?Changing batteries in base station , SimpliSafe Support Home

We can replace those batteries with actual NiMH rechargeables at no cost! It's actually pretty simple. You have to remove the power cord which will reveal a single screw on ...

[Email Contact](#)



The power supply design considerations for 5G base stations

Infrastructure OEMs and their suppliers see "pulse power" as a potential solution. This technique reduces opex by putting a base station into a "sleep mode," with only the ...

[Email Contact](#)

Replacing My Base Station and Transfer Service to a New Base Station

There may be a point where you will need to transfer your system and service to a new or different Base Station, such as replacing a faulty Base Station or transferring to a new Base Station ...



[Email Contact](#)

GRADE A BATTERY

LiFePO4 battery will not burn when overcharged, over discharged, overcurrent or short circuit and can withstand high temperatures without decomposition.



Management and maintenance of base station switching power supply

This article focuses on the three parts of switching power supply: "types and usage scenarios, configuration principles and algorithms, and daily management and maintenance".

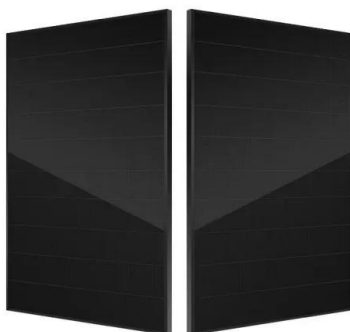
[Email Contact](#)



Telecommunication base station system working principle and ...

Operational principle The ESB-series outdoor base station system utilizes solar energy and diesel engines to achieve uninterrupted off grid power supply. Solar power ...

[Email Contact](#)



MTR3000 Base Station/Repeater and Satellite Receiver

The base station/repeater is equipped with a switching power supply, this assembly operates from 85 VAC to 264 VAC at 47 to 63 Hz AC input power. A standard 3-prong line cord is supplied to ...

[Email Contact](#)



How to Replace a Power Supply

Sometimes when you upgrade your PC, you will find that current power supply isn't powerful enough to support your new system. If you need to replace your power supply, here is how. Get a large surface to lay out all your parts and a cup to

[Email Contact](#)



[Management and maintenance of base station ...](#)

This article focuses on the three parts of switching power supply: "types and usage scenarios, configuration principles and algorithms, and daily ...

[Email Contact](#)

Power Supply Solutions for Wireless Base Stations Applications

Luckily, MORNSUN has a series of power solutions designed to provide state-of-the-art reliability while also curbing any unnecessary costs related to their installation, application, and ...

[Email Contact](#)



ESS



How To Power And Connect A CB Radio To a Home Base: Step ...

To power a CB radio at home, you'll need a power supply module that provides 12 to 14 volts of direct current (DC). This is because CB radio technology is designed for use in ...

[Email Contact](#)



[Configuring, Installing, and Using Base Stations](#)

Power the base stations by connecting the TVS module to the power supply. For more information, refer to the section, "Powering base stations" on page 3-27 in this guide.

[Email Contact](#)



[MM-015039-001, MASTR V Base Station](#)

The MASTR V Power Supply (PS) module EA-555011-001 (refer to Figure 4-9) is a continuous duty switching power supply. It operates from an input of 85 VAC to 265 VAC at 47 Hz to 63 ...

[Email Contact](#)



[Base Stations Options & Accessories](#)

The TB9400 base station is the second generation P25 base station with IP connectivity from Tait. It supports both modes of operation: Phase1 or Phase2. This possible Ph1 to Ph2 software ...

[Email Contact](#)



[INSTALLATION AND OPERATING INSTRUCTIONS](#)

The high voltage power supply module provides microprocessor controlled high voltage DC output to the static bar. The high voltage causes the ionizing pins on the static bar ...

[Email Contact](#)





[Power converter for base station](#)

A 30 amp power supply will run a 50 watt radio without any issues. A 30 amp power supply will handle two 50 watt radios transmitting at the same time as long as you are running ...

[Email Contact](#)



Murata-Base-station-app-guide

Moving up the mast In the era of 4G, network installations typically relied upon heavy duty infrastructure such as large power masts and passive cables and antennas, with much of the ...

[Email Contact](#)

what kind of power supplies do you guys use for base station

13.8v and 30a is fairly standard for a shack. That radio should run from 11.73v to 15.87v but at 12v and 5 amps, you'll probably put too much demand on that little power supply. ...

[Email Contact](#)



- ✓ 100KW/174KWh
- ✓ Parallel up-to 3sets
- ✓ IP Grade 54
- ✓ EMS AND BMS

Question about how much power to supply to your base teleporter

Just did the tutorial about having to build and power a teleporter at your first base. I powered it up for only a couple of minutes of run time. The next task was to fly into space and find the space ...

[Email Contact](#)



The power supply design considerations for 5G base ...

Infrastructure OEMs and their suppliers see "pulse power" as a potential solution. This technique reduces opex by putting a base station into a ...

[Email Contact](#)



TB8100 Specifications Manual

Dual Base Station Power and Current Consumption The performance figures given in these specifications are typical figures based on using the equipment listed below.

[Email Contact](#)

Contact Us

For catalog requests, pricing, or partnerships, please visit:
<https://www.ogrzewanie-jelenia.pl>