

How to choose a battery BMS





Overview

How do I choose a battery management system (BMS)?

Expert Support: Comprehensive support from conception through implementation and beyond, ensuring your systems perform optimally. Selecting the right Battery Management System (BMS) involves understanding your battery's needs and the specific features that a BMS can offer to meet those needs.

How do I choose the right battery management system?

Selecting the right Battery Management System (BMS) involves understanding your battery's needs and the specific features that a BMS can offer to meet those needs. By considering the factors outlined above, you can make an informed decision that enhances the performance and longevity of your battery systems.

How to choose a BMS for a lithium-ion battery?

The primary job of a BMS is to prevent overloading the battery cells. So, for this to be effective, the maximum rating on the BMS should be greater than the maximum amperage rating of the battery. When choosing a BMS for a lithium-ion battery, the most important aspect to consider is the maximum current rating of the BMS.

What are the components of a battery management system (BMS)?

One key component of a BMS is the protection circuitry. This circuitry includes voltage sensors, current sensors, temperature sensors, and balancing circuits. These sensors constantly monitor the state of each individual battery cell within a pack and relay important information back to the BMS.

How to choose a BMS?

Another vital aspect to keep in mind is the capacity or amp rating of your BMS. The amp rating determines how much current can flow through the



system without causing damage or overheating. It's crucial to choose a BMS that can handle the maximum current requirements of your application to prevent any safety risks.

How do I know if my BMS battery is compatible?

To ensure compatibility, verify that the BMS specifications match your battery's voltage, capacity, and chemistry. Check for specific features such as maximum current ratings and cell count support. Consulting manufacturer guidelines or technical documentation can also help confirm compatibility.



How to choose a battery BMS



Battery Management System

Choosing the right BMS can be daunting due to the variety of options available and the technical considerations involved. This guide aims to simplify the process, helping you ...

[Email Contact](#)

[Guide to Understanding Battery Management Systems](#)

Here, we'll shine a spotlight on how these battery management systems work and how to choose--and use--the right BMS for your battery. What is a Battery Management ...

[Email Contact](#)



[LiFePO4 BMS \(Understanding a battery management ...\)](#)

In this article we will introduce you to the LiFePO4 BMS, we'll discuss how they work and how to choose the right BMS for your battery.

[Email Contact](#)



[How Do I Choose the Right BMS? A Comprehensive Guide](#)

A BMS is an essential component of any battery system, as it helps to maintain the health and safety of your batteries. In this article, we will guide you through the different aspects of ...



[Email Contact](#)



[Decoding BMS: Your Guide to Choosing the Perfect ...](#)

Introduction: Choosing the right Battery Management System (BMS) is crucial for the optimal performance and safety of your lithium-ion battery pack. In this ...

[Email Contact](#)



[Best Battery Monitoring Systems: A Swift Power Guide](#)

Choosing a BMS that can scale with your system is crucial for long-term success. Consider the following: Modular Design: A BMS with a modular design allows ...

[Email Contact](#)



[How Do I Choose a BMS for a Lithium-Ion Battery?](#)

A BMS monitors and manages the various aspects of battery operation, including charging, discharging, and overall health. In this comprehensive guide, we will explore the key ...

[Email Contact](#)



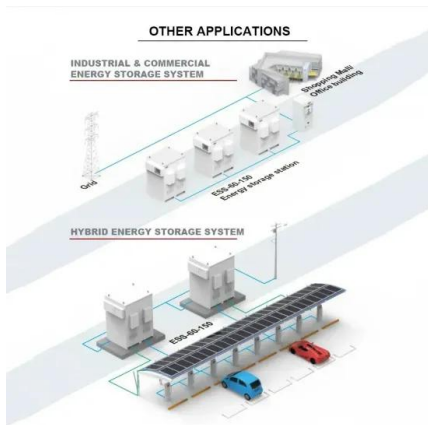


[Guide to Understanding Battery Management ...](#)

Here, we'll shine a spotlight on how these battery management systems work and how to choose--and use--the right BMS for your battery.

...

[Email Contact](#)



[Best Battery Monitoring Systems: A Swift Power Guide](#)

Choosing a BMS that can scale with your system is crucial for long-term success. Consider the following: Modular Design: A BMS with a modular design allows you to add or remove ...

[Email Contact](#)

[How to Choose a BMS for LiFePO4 Cells](#)

Choose a BMS that offers comprehensive safety features to protect your LiFePO4 cells from potential hazards. Ignoring Scalability: If you have plans to expand your LiFePO4 battery ...

[Email Contact](#)



[How to Choose the Best BMS for Your Battery Needs](#)

Learn key factors for selecting a Battery Management System (BMS), including compatibility, safety, and scalability, to ensure optimal battery performance.

[Email Contact](#)



[What Amp BMS Do I Need? Sizing Battery Management Systems](#)

Choosing the right Battery Management System (BMS) is crucial for ensuring optimal performance and safety of your battery system. A BMS acts as the brain behind managing ...

[Email Contact](#)



[How to Choose Between a Single-Cell and Multi-Cell Battery ...](#)

Understanding the differences between a Single Cell Battery Management System (BMS) and a Multi-Cell Battery Management System is essential for optimizing battery ...

[Email Contact](#)

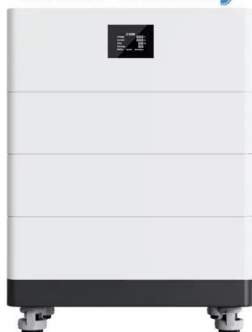
[How To Choose A BMS For Lithium Batteries](#)

Even though a BMS is not required for a battery to function, they are required for a lithium-ion battery to be safe. If you want to choose the right BMS, you need to consider things ...

[Email Contact](#)



[High Voltage Solar Battery](#)



[How to Choose the Right Battery Management System \(BMS\)](#)

Choosing the right BMS is a critical decision that can affect the performance, safety, and lifespan of your battery. In this article, we will discuss the factors you need to ...

[Email Contact](#)



[How Do I Choose the Right BMS? A Comprehensive Guide](#)

How do I choose the right BMS? A Comprehensive Guide If you are looking for a Battery Management System (BMS), you may be wondering how to choose the right one for your ...

[Email Contact](#)



[\[2025 Guide\] How to Choose LiFePO4 BMS - LiTime-AU](#)

Learn how to choose the right LiFePO4 BMS for your needs with practical tips, especially for a 200Ah lithium battery used in RVs, marine, and ...

[Email Contact](#)



[How to Choose a Battery Management System: A Guide](#)

To choose a Battery Management System (BMS), consider factors like compatibility with your battery type, capacity management features, temperature monitoring capabilities, ...

[Email Contact](#)



[How to Choose a BMS for LiFePO4 Cells: A Complete Guide](#)

EVE BMS for High - Capacity LiFePO4 Systems EVE is a leading manufacturer in the lithium - ion battery industry, and their BMS products are designed to manage high - ...

[Email Contact](#)





[Best Battery Management System For Lithium ion ...](#)

Find out how to choose the right battery management system for lithium ion batteries by analyzing key parameters like voltage, current, and ...

[Email Contact](#)



[how to choose BMS in a battery pack?](#)

I am looking for help to design a battery pack, or mainly some guidelines so i don't screw up instantly. I am going to start "easy" since there is a lot of them used out there, ...

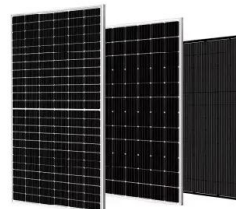
[Email Contact](#)



[how to choose a BMS for lifepo4 cells?](#)

1. How to choose BMS for lithium iron phosphate battery BMS is the abbreviation of battery management system, as the name suggests, this is a kind of electronic system that ...

[Email Contact](#)



[How To Choose A BMS For Lithium Batteries](#)

Choosing the right Battery Management System (BMS) is crucial for ensuring optimal performance and safety of your battery system. A BMS acts as the brain behind managing ...

[Email Contact](#)



Contact Us

For catalog requests, pricing, or partnerships, please visit:
<https://www.ogrzewanie-jelenia.pl>