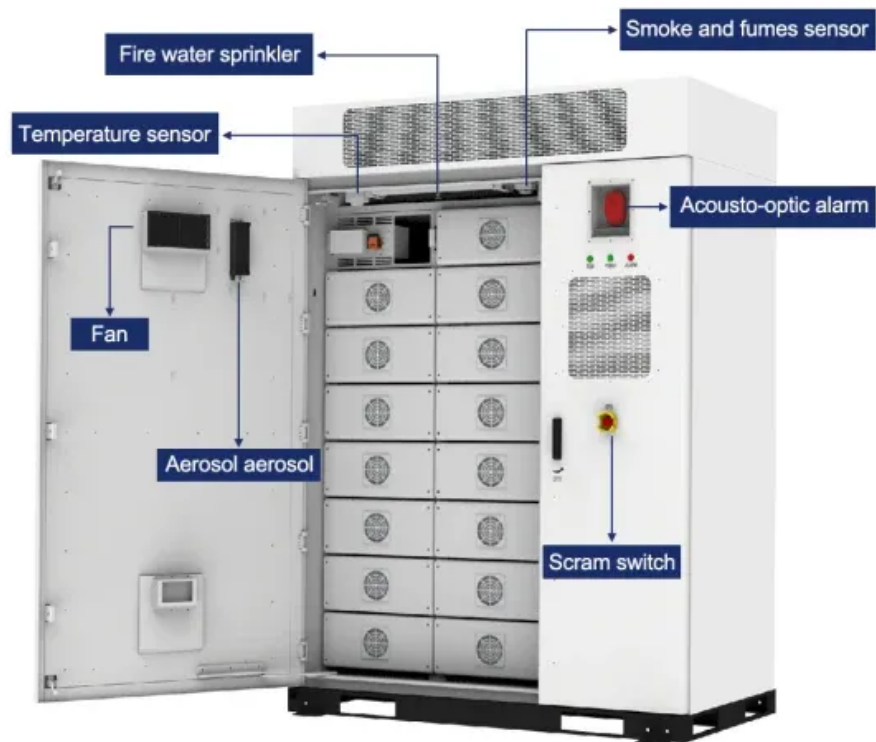


How to connect the battery cabinet to the DC power supply





Overview

How do I connect a battery cabinet to an ups?

Connect the DC+ and DC- cables to the DC+ and DC- terminals. Connect the power cables in the UPS. If more battery cabinets are part of the solution, connect all battery cabinets to the UPS according to the diagram below.

How do I connect a battery to a ups?

Connect main cables to the circuit breaker, when applicable, inside the cabinet from the UPS or charger source. All cables should be sized per NEC and any other local codes pertaining to this equipment. Refer to the UPS or charger manual for wiring external batteries.

How do I install a battery cabinet?

Install plastic covers onto batteries. Some covers may need to be notched for locations with bus bars and/or cables in upward orientation. Ground the battery cabinet to the main building ground. A ground stud inside the cabinet is provided for this. Refer to the UPS or charger manual for start up and operation of system.

How do you ground a battery cabinet?

Ground the battery cabinet to the main building ground. A ground stud inside the cabinet is provided for this. Refer to the UPS or charger manual for start up and operation of system. 8. SYSTEM MAINTENANCE.

How do I connect a DC+ & DC- cable?

Connect the DC+ and DC- cables to the DC+ and DC- terminals. Connect the PE cable to the PE terminal/Connect the EGC cable to the grounding terminal. For installations with two hole cable lugs only, temporarily remove the protection cover. NOTE: The protection cover must be reinstalled when the DC- cable has been connected.



How do I install a powerwarer 9315 cabinet?

Prepare the site for the cabinet installation. Inspect, unpack, and unload the cabinet. Create an installation plan for wiring the parallel cabinet to the corresponding UPS modules. Prepare for wiring. Complete the installation checklist from the PowerwareR 9315 Installation manual.



How to connect the battery cabinet to the DC power supply



Microsoft Word

Connect main cables to the circuit breaker, when applicable, inside the cabinet from the UPS or charger source. All cables should be sized per NEC and any other local codes pertaining to ...

[Email Contact](#)

[Can a DC Power Supply Be Hooked to a Battery?](#)

Proper connection between a DC power supply and battery requires methodical preparation and execution. Rushing this process can lead to catastrophic failures, while ...

[Email Contact](#)



[Applications of UPS \(Uninterruptible Power Supply\) in ...](#)

Due to this, good power supply quality is crucial to avoid downtime caused by disruptions or hardware damage. A 24V DC UPS can manage ...

[Email Contact](#)



[DC Terminal Block Power Supply: Step-by-Step Connection ...](#)

DC Terminal Block Power Supply: Step-by-Step Connection Guide Learning how to connect a power supply to a terminal block is a fundamental skill for DIY enthusiasts, electrical ...



[Email Contact](#)



[Simple installation manual of DC cabinet](#)

One end of the cable is connected with the total positive and total negative copper bar inside the DC cabinet, and the other end of the cable is connected with the battery end of HPS or PCS ...

[Email Contact](#)



51.2V 300AH

[Parallel Redundant Uninterruptible Power Supply](#)

This chapter describes the internal connections of the parallel cabinet to UPS modules utilizing separate battery cabinet(s) and a shared battery cabinet(s). Determine which battery ...

[Email Contact](#)



Battery Cabinet

This manual contains information on Atlantic Battery Systems battery cabinets. The information in this manual is intended for Qualified Installers, Equipment Engineers, and Field Support ...

[Email Contact](#)

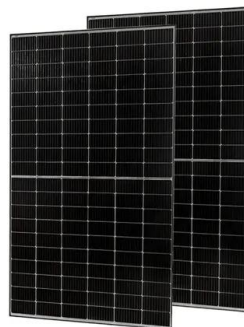


Connect the Power Cables

Connect the DC+ and DC- cables to the DC+ and DC- terminals. Connect the power cables in the UPS. If more battery cabinets are part of the solution, connect all battery cabinets to the UPS

...

[Email Contact](#)



[DC female Power Jack basic pinout and details](#)

The cabinet mount or Panel Mount DC Jack is widely used where you need to provide DC power supply to your circuit which is mounted inside a cabinet. ...

[Email Contact](#)

[How to Properly Connect an AC/DC Power Supply with 220Vac ...](#)

In this video, we're going to show you step-by-step how to connect your power supply to a 220 volt source.? We'll walk you through verifying the input voltage specs from the data sheet

[Email Contact](#)



[Substation DC Auxiliary Supply - Battery And Charger ...](#)

DC voltage 110 V or 220 V A power substation can have one or several DC systems. Factors affecting the number of systems are the need for

...

[Email Contact](#)



[FlexPower Generation 2 DC Power System Installation Manual](#)

Power Supply Quick Start This section gives a quick visual guide of installation connections and settings for installers already familiar with the FlexPower line of power supplies. For full ...

[Email Contact](#)



How to do UPS Battery Wiring?

Learn how to wire UPS batteries safely with our detailed step-by-step guide. From installation location to proper battery connection and wiring tips, ensure a ...

[Email Contact](#)

Routing DC Cables to the Inverter or DC Distributor in the Battery Cabinet

These DC cables can be shortened only at the inverter or at the DC distributor. Therefore, before connecting the inverter or DC distributor and the battery cabinet, route the DC cables required ...

[Email Contact](#)



Routing DC Cables to the Inverter or DC Distributor in the Battery ...

These DC cables can be shortened only at the inverter or at the DC distributor. Therefore, before connecting the inverter or DC distributor and the battery cabinet, route the DC cables required ...

[Email Contact](#)



[Generac PWRcell Outdoor Rated \(3R\) Battery Cabinet : Install ...](#)

Installing Generac PWRcell Battery Section 4:
Installing Generac PWRcell Battery Carton
Contents o Wall bracket o Chassis (gray),
including pre-installed electronics package and ...

[Email Contact](#)



 LFP 280Ah C&I

How to do UPS Battery Wiring?

Learn how to wire UPS batteries safely with our
detailed step-by-step guide. From installation
location to proper battery connection and wiring
tips, ensure a secure and efficient UPS setup ...

[Email Contact](#)

[-48 VDC Battery Cabinet Installation and User Manual...](#)

Connect the power system's battery cable
terminated in an Anderson connector to the first
battery cabinet's battery cable terminated in a
mating Anderson connector.

[Email Contact](#)



[Generac Power Systems PWRcell Series Installation...](#)

The battery can be used for grid- is directly
connected to PV Link (B) and PWRcell battery
connected solar applications such as self-supply,
rate (C) on ...

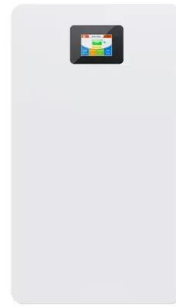
[Email Contact](#)



[Using External power supplies with Arduino explained!](#)

So, I'm back to another tutorial! Well, today I'll show how to correctly use external power supply with Arduino! Is Really simple, You will see: Power ...

[Email Contact](#)



[How to Connect Backup Battery to Power Supply? . Guide](#)

Connecting a backup battery to a power supply is a critical task that ensures your system remains operational during power outages. By understanding the types of backup batteries, gathering ...

[Email Contact](#)

[CCTV Camera Power Supply connection.](#)

This video shows;1. How to connect the main Electricity Power into the CCTV Power Supply unit.2. How to power up CCTV cameras by wiring them up into the CCTV

[Email Contact](#)



[UNDERSTANDING UPS SYSTEMS AND BATTERIES](#)

UNDERSTANDING UPS SYSTEMS AND BATTERIES Putting the 'U' in UPS When it comes to an uninterruptible power supply (UPS), the battery is one of the most important subsystems ...

[Email Contact](#)



Contact Us

For catalog requests, pricing, or partnerships, please visit:
<https://www.ogrzewanie-jelenia.pl>