

How to connect the power supply in series with the lithium battery station cabinet





Overview

How to wire lithium batteries in series?

Lithium batteries are part of our everyday gadgets like phones, laptops, and even electric cars, so knowing how to wire them in series is essential for any practical project. To wire lithium batteries in series to increase voltage, connect the positive terminal of one battery to the negative terminal of the next.

Why are lithium batteries connected in series?

Lithium batteries are connected in series when the goal is to increase the nominal voltage rating of one individual lithium battery - by connecting it in series strings with at least one more of the same type and specification - to meet the nominal operating voltage of the system the batteries are being installed to support.

Can lithium-ion batteries be connected in parallel or in series?

Connecting lithium-ion batteries in parallel or in series is not as straightforward as a simple series-parallel connection of circuits. To ensure the safety of both the batteries and the individual handling them, several important factors should be taken into consideration.

How many lithium batteries can be connected in series?

For instance, LiTime allows for a maximum of four 12V lithium batteries to be connected in series, resulting in a 48-volt system. It's always important to consult the battery manufacturer to ensure that you stay within their recommended limits for series connections.

When should a lithium battery be connected in series?

You should connect lithium batteries in series when your device requires a higher voltage than a single battery can provide. For example, if your device operates at 7.4V, connecting two 3.7V batteries in series would be



appropriate. This setup is commonly used in applications like electric scooters, drones, or other high-voltage devices.

How do you connect two batteries in a series?

Create Series Pairs: Connect two batteries in series by soldering the positive terminal of the first battery to the negative terminal of the second battery. Do the same for the other two batteries. Combine Series Pairs in Parallel: Solder the positive terminals of both series pairs together using a wire.



How to connect the power supply in series with the lithium battery



[Batteries in Parallel vs Series. All You Need to Know](#)

What Happens When Batteries Are Wired in Series? Wiring in series connects the positive terminal of one battery to the negative of the next, ...

[Email Contact](#)

[INSTALLATION, OPERATIONS and MAINTENANCE](#)

Operations Manual Product Introduction Narada MPL series of Lithium Iron Phosphate (LFP) 48V / 51.2V Batteries are a safe and reliable product for equipment site backup power systems, ...

[Email Contact](#)



[Powering Up Safely: How to Wire Batteries in Series](#)

In this guide, we'll walk you through the steps on how to wire batteries in series to safely create a higher voltage battery pack for your needs. Note that when connecting ...

[Email Contact](#)

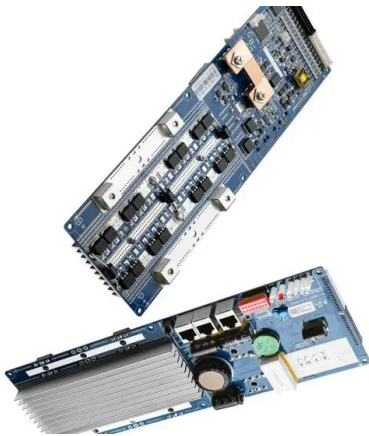


[How To Wire Lithium Batteries In Series to Increase Voltage](#)

In this article, we will explain why you would want to wire lithium-ion batteries in series, how you wire them in series and how to charge battery cells while in series.



[Email Contact](#)



[How to Connect 48V Batteries in Series: Comprehensive Guide](#)

Connecting 48V batteries in series increases system voltage by linking the positive terminal of one battery to the negative of the next. Proper series wiring ensures safe operation, ...

[Email Contact](#)

[How to Connect and Charge Lithium Batteries? - ECO-WORTHY](#)

A battery management system (BMS) is a system that manages and protect the battery from over-charging?over-discharging?over-current?over-voltage?over-temperature and short ...

[Email Contact](#)



[Ultimate Guide of LiFePO4 Lithium Batteries in Series & Parallel](#)

Connecting lithium-ion batteries in parallel or in series is not as straightforward as a simple series-parallel connection of circuits. To ensure the safety of both the batteries and the individual ...

[Email Contact](#)

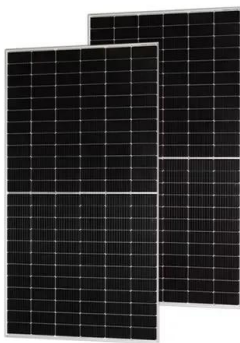




[Step-by-Step Guide: How to Safely Wire 12V LiFePO4 Batteries in Series](#)

Upgrading your power system to 24V or 36V doesn't require buying new equipment. By wiring 12V LiFePO4 batteries in series, you can achieve higher voltage for ...

[Email Contact](#)



[How to Wire 2 Batteries for a 24 Volt System](#)

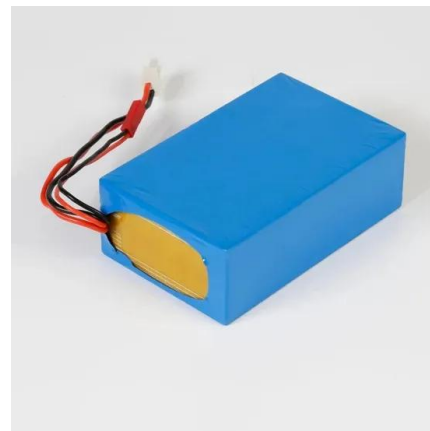
First and foremost, it's important to determine if your batteries are capable of being wired in series or parallel. Wiring in series involves connecting the ...

[Email Contact](#)

[Complete Guide to Wiring Batteries in Series - PowMr](#)

3 days ago · How to wire 12V batteries in series? This guide explains voltage, amp-hours, precautions, pros& cons, and steps for reliable series battery connections.

[Email Contact](#)



[How to Connect and Charge Lithium Batteries?](#)

Please check the positive and negative poles and make sure you connect the correct terminals. Then please use the wrench to tighten the screw, battery cable and spring gasket. If you want ...

[Email Contact](#)





[How To Wire Batteries In Series Vs Parallel?BSLBATT](#)

Learn how to wire batteries in series vs parallel to increase voltage or capacity. Understand key differences and choose the right setup for your ...

[Email Contact](#)



[All Things You Need to Know about Lithium Battery Series,...](#)

It is easily to answer" Why lithium cells need parallel and series?" As we have explained above, Due to the limited voltage and capacity of single cells, in order to meet the actual power supply ...

[Email Contact](#)

[How to Wiring Batteries in Series and Parallel with...](#)

Learn how to create custom power sources by connecting batteries in series and parallel configurations! ? This video tutorial will guide you ...

[Email Contact](#)



[How to Wire Batteries in Parallel or Series](#)

All of our batteries can be connected to produce more power to run bigger motors (voltage - v), or extra capacity (amp hours - Ah). This called wiring a battery in series or in ...

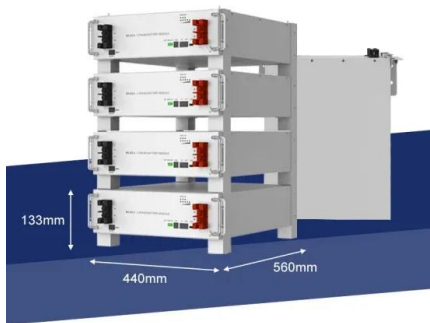
[Email Contact](#)



[How to Wire Batteries in Parallel or Series](#)

All of our batteries can be connected to produce more power to run bigger motors (voltage - v), or extra capacity (amp hours - Ah). This called ...

[Email Contact](#)



power supply

I've two identical 5V akku packs and need a 10V Power supply. So is it possible to connect these two akku packs in series to reach this or are there any critical issues, that can ...

[Email Contact](#)



[Ultimate Guide of LiFePO4 Lithium Batteries in Series ...](#)

Connecting lithium-ion batteries in parallel or in series is not as straightforward as a simple series-parallel connection of circuits. To ensure the safety of both the ...

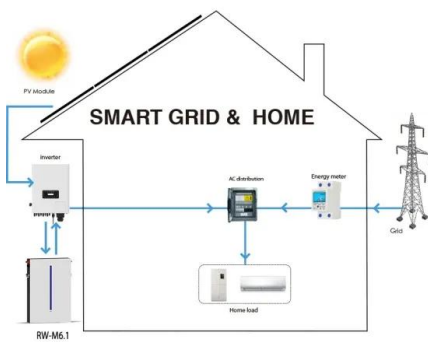
[Email Contact](#)



[How to Wiring Batteries in Series and Parallel with LiTime Power!](#)

Learn how to create custom power sources by connecting batteries in series and parallel configurations! ? This video tutorial will guide you through the pro

[Email Contact](#)



[A Complete Diagram: How to Connect 2 12 Volt ...](#)

Learn how to connect two 12 volt batteries in series with this detailed diagram. Increase your voltage output for a more powerful electrical system.

[Email Contact](#)

[How to Connect and Charge Lithium Batteries?](#)

Please check the positive and negative poles and make sure you connect the correct terminals. Then please use the wrench to tighten the screw, battery ...

[Email Contact](#)



[Wiring Two Batteries in Series: A Comprehensive Guide](#)

Maintenance Complexity: Monitoring each battery's state of charge becomes crucial for balanced discharge cycles; otherwise, performance can ...

[Email Contact](#)



[Connecting Lithium Batteries in Parallel and Series , Large Power](#)

How to Connect Lithium Batteries in Parallel and Series? Series connection increases battery voltage.Parallel connection increases battery capacity.

[Email Contact](#)

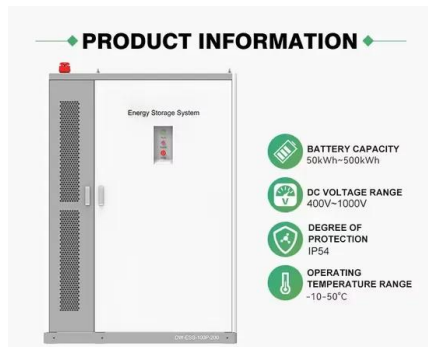
Energy storage(KWH)

102.4kWh

Nominal voltage(Vdc)

512V

Outdoor All-in-one ESS cabinet



[How to Connect Lithium Cells in Series and Parallel?](#)

Lithium batteries power a wide range of devices, from smartphones to electric vehicles. Knowing how to connect these batteries in series, parallel, ...

[Email Contact](#)

[Powering Up Safely: How to Wire Batteries in Series](#)

In this guide, we'll walk you through the steps on how to wire batteries in series to safely create a higher voltage battery pack for your ...

[Email Contact](#)



[Maximizing Power and Capacity: A Comprehensive Guide](#)

Maximizing power and capacity when connecting lithium-ion batteries involves understanding how to effectively wire them in series or parallel configurations, ensuring ...

[Email Contact](#)



[How to Connect Lithium Cells in Series and Parallel?](#)

In this article, we'll explore the basics and provide detailed, step-by-step instructions on how to connect lithium batteries in series, parallel, and ...

[Email Contact](#)



18650 3.7V
Li-ion
RECHARGEABLE BATTERY
2000mAh



[Lithium Series, Parallel and Series and Parallel](#)

3 days ago · How to wire 12V batteries in series? This guide explains voltage, amp-hours, precautions, pros& cons, and steps for reliable series battery connections.

[Email Contact](#)

[Maximizing Power and Capacity: A Comprehensive ...](#)

Maximizing power and capacity when connecting lithium-ion batteries involves understanding how to effectively wire them in series or ...

[Email Contact](#)



[How to Connect Lithium Cells in Series and Parallel?](#)

In this article, we'll explore the basics and provide detailed, step-by-step instructions on how to connect lithium batteries in series, parallel, and series-parallel configurations.

[Email Contact](#)



Contact Us

For catalog requests, pricing, or partnerships, please visit:
<https://www.ogrzewanie-jelenia.pl>