

# How to measure current in lithium battery station cabinet





## Overview

---

To measure current, first disconnect the battery from any load. Set your multimeter to DC current mode and select an appropriate range based on expected current draw. Connect the probes: red on the positive terminal and black on the negative terminal.



## How to measure current in lithium battery station cabinet

---



### [Fast Charging Electric Scooter Batteries Pros and Cons](#)

Battery Chemistry: Lithium-ion (Li-ion) and lithium-polymer (LiPo) batteries dominate e-scooters due to their high energy density. However, LiPo handles rapid charging ...

[Email Contact](#)

### [Choosing the Right Lithium Ion Battery Cabinet: A...](#)

Ensure maximum safety and efficiency with this in-depth guide on selecting a lithium ion battery cabinet. Learn key features, regulations, and ...

[Email Contact](#)



### [How Can You Measure Battery Current Using a Multimeter?](#)

You can measure battery current using a multimeter by setting it to the ammeter function and connecting it in series with the circuit. This allows you to accurately gauge how ...

[Email Contact](#)

### [How Can You Accurately Test Lithium Batteries Using a Multimeter?](#)

Understanding how to accurately measure a lithium battery's voltage and health can save you time, money, and prevent potential safety hazards. With just a simple tool like a multimeter, ...



[Email Contact](#)



### [How to Measure OCV of Battery: A Step-by-Step Guide](#)

Knowing how to measure OCV is crucial for various applications, from car batteries to rechargeable lithium-ion cells. Whether you're maintaining a vehicle, troubleshooting a solar ...

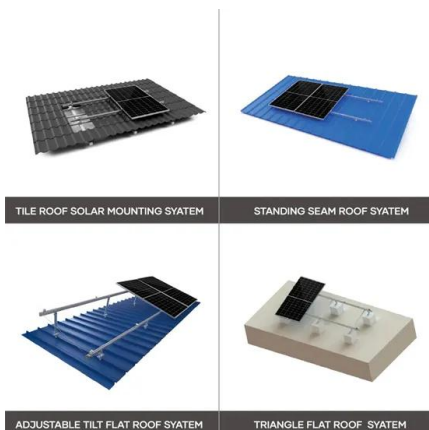
[Email Contact](#)



### [Lithium-ion Battery Cabinets - Storemasta](#)

A battery cabinet is a particular type of storage cabinet that reduces the risks associated with lithium-ion batteries. These innovative cabinets create a safer ...

[Email Contact](#)



### [How to measure current in lithium battery cabinet](#)

Use a multimeter to measure the voltage across the terminals for estimating the current state of charge in your 12V lithium battery. Tools for Charging Management: Employ a battery monitor ...

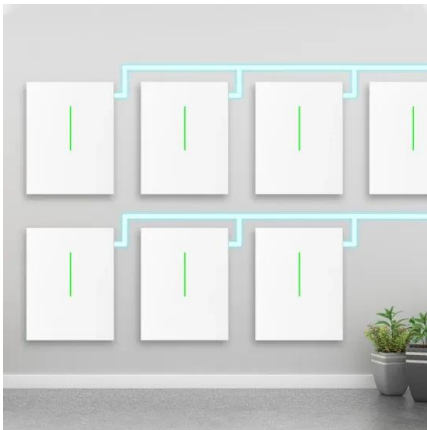
[Email Contact](#)



#### [4-station-lithium-ion-battery-cabinet](#)

The 4 Station Lithium-ion Battery Charging and Storage cabinet has 4 power sockets for you to plug in 4 lithium-ion battery chargers, that's four batteries ...

[Email Contact](#)



#### [How to Measure and Understand Lithium Battery Capacity](#)

Learn what lithium battery capacity is, why it matters, and how to measure it. Discover the factors affecting capacity and its impact on battery life.

[Email Contact](#)

#### [Calculating the LiFePO4 battery short circuit current](#)

I'm trying to understand how to calculate a LiFePO4 battery short circuit current. I have a 12V 100Ah LiFePO4 battery and the manual states an internal Impedance of 40m?. So ...

[Email Contact](#)



#### [How to Measure Current of a Battery Using Multimeter? A Simple ...](#)

This detailed guide will equip you with the knowledge and practical steps needed to accurately measure battery current using a multimeter, covering various scenarios, potential ...

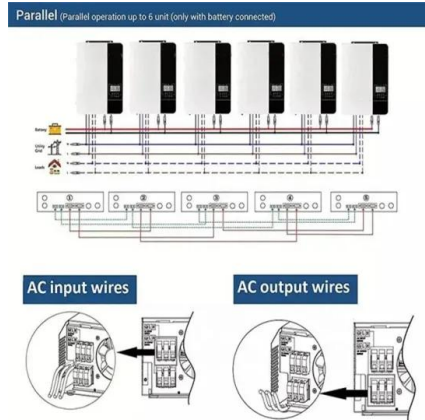
[Email Contact](#)



## [Choosing the Right Battery Storage Cabinet: A ...](#)

Discover essential considerations when selecting a battery storage cabinet for lithium-ion batteries. Learn about ventilation, fire safety, ...

[Email Contact](#)



### Lithium battery parameters



## [Electrical measurement of lithium-ion batteries](#)

Starting from this article, we will share a series of articles with you to systematically introduce the electrical measurement technology of lithium-ion batteries.

[Email Contact](#)

## [Electrical measurement of lithium-ion batteries](#)

Starting from this article, we will share a series of articles with you to systematically introduce the electrical measurement technology of lithium-ion ...

[Email Contact](#)



## [Lithium Ion Battery Charging Cabinets](#)

The number of batteries that can be safely stored and charged in the cabinet will vary based on the amount of energy within each battery. Use the chart below ...

[Email Contact](#)

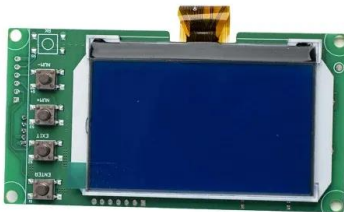




### [Lithium Battery Charging Cabinet: The Essential Guide to Safe ...](#)

The widespread use of lithium-ion batteries across various industries and applications--ranging from power tools to electric vehicles--has led to increasing concern ...

[Email Contact](#)



### [How to Measure Current of a Battery Using Multimeter? A Simple ...](#)

Conversely, underestimating the current needs of a device can result in poor performance or premature battery failure. This detailed guide will equip you with the ...

[Email Contact](#)

### [How to test the internal current of the battery cabinet](#)

The Hioki BT3562 battery tester is designed to measure internal resistance using an AC current at a measurement frequency of 1 kHz, letting you accurately capture the internal resistance of



[Email Contact](#)



### [Electrical Measurements of Lithium-Ion Batteries](#)

Typical measurement and test instrument includes charge/discharge systems, impedance meters, insulation testers, and high-precision voltmeters. HIOKI offers a variety of ...

[Email Contact](#)





### [Simplify Voltage and Current Measurement in Battery Test ...](#)

To charge the battery, the buck converter is enabled while the first-stage voltage Op Amps and current-sense INA are used to measure battery voltage and charging current of the battery cell ...

[Email Contact](#)

Modular design,  
unlimited combinations in parallel  
**BUILT-IN DUAL FIRE PROTECTION MODULE**



### [Amp Measurement Using a Multimeter for Lithium Ion Batteries](#)

To accurately measure current, follow specific steps that involve setting up your multimeter correctly and understanding how to interpret the readings. This guide will help you ...

[Email Contact](#)

### [How To Measure Internal Resistance With A Multimeter](#)

Discover a straightforward method to calculate the internal resistance of lithium-ion batteries using a multimeter. Learn how to assess ...

[Email Contact](#)



### [Simplify Voltage and Current Measurement in Battery Test ...](#)

Depending on the output current requirements, the buck-boost functions can be accomplished several ways; however, two approaches are the most common. For higher current ...

[Email Contact](#)







## Contact Us

---

For catalog requests, pricing, or partnerships, please visit:  
<https://www.ogrzewanie-jelenia.pl>