

# **How to use base station batteries**





## Overview

---

How do you replace a battery in a base station?

To replace batteries in a SimpliSafe base station, rotate the base counterclockwise (CCW) to remove it, then remove the batteries and replace them while ensuring the (-) and (+) orientation. When disposing of NiMH batteries, they should be recycled.

What is a base battery system?

The Base battery system is built for performance and reliability. It combines a high-capacity lithium iron battery with intelligent software to optimize energy use. The Base battery system has three main components: the battery pack, inverter, and hub. The long white unit is the battery pack. We mount the battery pack on the ground.

How does a base battery work?

This process is called grid-balancing. Base batteries deploy energy to the grid faster than any other service, which is how Base is able to recoup the cost of the battery equipment and keep prices low for homeowners. The charge level of your Base battery will naturally fluctuate over time, rising and falling throughout a multi-day cycle.

What type of batteries does the base station use?

Your SimpliSafe Base Station is fitted with NiMH rechargeable batteries, which are constantly recharging as long as the Base Station is plugged in. The base station model is SSBS3.

Which battery is best for telecom base station backup power?

Among various battery technologies, Lithium Iron Phosphate (LiFePO<sub>4</sub>) batteries stand out as the ideal choice for telecom base station backup power due to their high safety, long lifespan, and excellent thermal stability.



Can you put alkaline batteries in a base station?

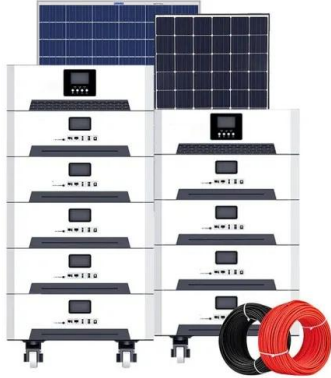
NEVER insert regular alkaline batteries into the Base Station as they may damage the device. Plug your Base Station back into power. Was this helpful?

Does your Keypad look like the one pictured to the left?



## How to use base station batteries

---



### [Base Station Battery Question : r/simplisafe](#)

The Base station uses rechargeable batteries, if you are worried about long power outages I would try to get a UPS or similar for your Base station rather than swapping batteries out as ...

### [Email Contact](#)

### Base Station Battery Failure , SimpliSafe Support Home

Your Base Station comes pre-installed with four (4) NiMH (nickel-metal hydride) rechargeable batteries, which are kept charged by your Base Stations. These ...

### [Email Contact](#)



### How do Battery Kits work? :: Stationeers General Discussions

I can't seem to get it to charge. My plan, electronics plan is to run the following: Producer Grid> Batteries > Main Grid >Individual Rooms (each room will have an APC) But I ...

### [Email Contact](#)

### How To Replace Base Station Batteries , SimpliSafe Support Home

You will likely never need to replace your Base Station's batteries as they are rechargeable and meant to last. The Base Station takes four (4) 1.2V, 1300mAh nickel-metal hydride (NiMH) ...



[Email Contact](#)



### Where is SimpliSafe Battery Located? (A Complete ...

Here's a Quick TLDR The SimpliSafe battery is located in the base station of the security system. To access the battery, you'll need to remove the screw at the ...

[Email Contact](#)

### Station Battery

Never shortcut any battery - no loops! To build a cascade of batteries (e.g. a stationary battery near solar panels and an APC at base power input), separate networks with ...

[Email Contact](#)



### Base batteries not charging , SimpliSafe Support Home

Could you please check what type of batteries are installed in your Base Station? If you see alkaline, that type of battery is not able to charge, which might be why you're seeing ...

[Email Contact](#)



## Base Station Battery Failure , SimpliSafe Support Home

Your Base Station comes pre-installed with four (4) NiMH (nickel-metal hydride) rechargeable batteries, which are kept charged by your Base Stations. These batteries should never be ...

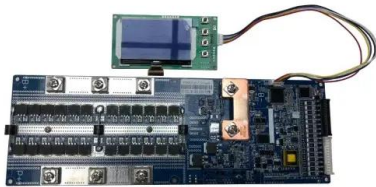
[Email Contact](#)



## SimpliSafe Battery Guide: Battery Life and Replacement Tips

Aside from the SimpliSafe base station and SimpliCam, SimpliSafe components require a periodic replacement of their batteries. In this article, you will learn more about ...

[Email Contact](#)



## External Battery for Trimble SPS855, R750, R9s Base ...

External power for your Trimble GPS / GNSS base station. This compact power pack from Grade Control Products is a simple way to power your base station ...

[Email Contact](#)



## Base batteries not charging , SimpliSafe Support Home

Could you please check what type of batteries are installed in your Base Station? If you see alkaline, that type of battery is not able to charge, ...

[Email Contact](#)



## How the Base battery works: A complete guide to grid ...

How does your Base battery work? How does it connect to the grid? What happens during an outage? This guide covers everything you need to know ...

[Email Contact](#)



## SimpliSafe Battery Guide: Battery Life and Replacement Tips

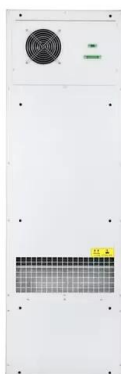
Never shortcut any battery - no loops! To build a cascade of batteries (e.g. a stationary battery near solar panels and an APC at base ...

[Email Contact](#)

## [SimpliSafe Batteries: Everything You Need to Know](#)

Always be on the lookout for low battery alerts, and remember to replace batteries as needed. By following the tips and guidelines outlined in ...

[Email Contact](#)



## How the Base battery works: A complete guide to grid ...

How does your Base battery work? How does it connect to the grid? What happens during an outage? This guide covers everything you need to know about how your Base battery ...

[Email Contact](#)





## How to Remove Battery from SimpliSafe Base Station

Learn the step-by-step process to safely remove the battery from your SimpliSafe Base Station. Ensure your security system stays functional and efficient.

[Email Contact](#)



## What do you use for a external battery on a R12 ...

Trimble makes a battery but I believe it is expensive. I use either a car or motorcycle battery with gator clips and a cord we got from trimble with a fuse.

[Email Contact](#)

## D-RTK 2 Mobile Station Setup

Insert battery into base station battery port If using power adapter remove adapter port plug and insert adapter Plug into power Press, release, press and hold ...

[Email Contact](#)



## Ring Alarm (2nd Gen)

Top Articles Setting Up and Registering Your Base Station in the Ring App Add your Ring Alarm Base Station to your Devices in the Ring app to begin setting up your Ring Alarm system.

[Email Contact](#)





## How about base station energy storage batteries , NenPower

One significant aspect of these batteries is their ability to improve grid resilience, which is crucial in areas prone to power interruptions. This detailed analysis provides an ...

[Email Contact](#)



## [SimpliSafe Batteries: Everything You Need to Know](#)

Always be on the lookout for low battery alerts, and remember to replace batteries as needed. By following the tips and guidelines outlined in this article, you'll be well-equipped ...

[Email Contact](#)

## [?Base Station , SimpliSafe Support Home](#)

How SimpliSafe® Products Communicate  
SimpliSafe® products use varying methods of communication to talk to the Base Station and even your network. Below is a breakdown of the ...

[Email Contact](#)



## **?Changing batteries in base station , SimpliSafe Support Home**

But if you ever need to replace your Base Station's batteries, you can find a step-by-step guide here. IMPORTANT: Please make sure that you use NiMH (nickel-metal hydride) ...

[Email Contact](#)





## Top Echo Dot Battery Base Options for Every Generation

Discover the best Echo Dot Battery Base for each generation. Make your Alexa portable and enjoy the freedom of a cord-free experience.

[Email Contact](#)



## [ZTE WIRELESS HOME PHONE BASE USER GUIDE](#)

We know you're excited to use your new ZTE Wireless Home Phone Base, and this user guide will help you get familiar with it, so you can start using it as soon as possible. Each section ...

[Email Contact](#)



## Telecom Base Station Backup Power Solution: Design ...

Designing a 48V 100Ah LiFePO4 battery pack for telecom base stations requires careful consideration of electrical performance, thermal ...

[Email Contact](#)



## [How about base station energy storage batteries](#)

One significant aspect of these batteries is their ability to improve grid resilience, which is crucial in areas prone to power interruptions. This ...

[Email Contact](#)





## Sudden Low Battery Warnings , SimpliSafe Support Home

Reassemble the Base Station by inserting the battery, cover, and the power cord When powered up after the reset, the Base Station will say "Welcome to SimpliSafe"

[Email Contact](#)



## Telecom Base Station Backup Power Solution: Design Guide for ...

Designing a 48V 100Ah LiFePO4 battery pack for telecom base stations requires careful consideration of electrical performance, thermal management, safety protections, and ...

[Email Contact](#)

## Getting the Most Out of Your Lithium-Ion Batteries for ...

Lithium-ion batteries are a crucial part of our business. They are just as important as the tools they power. Discovering that you have a ...

[Email Contact](#)



[?Base Station , SimpliSafe Support Home](#)

You will likely never need to replace your Base Station's batteries as they are rechargeable and meant to last. However, if you need to replace your Base Station batteries for any reason, ...

[Email Contact](#)



## Contact Us

---

For catalog requests, pricing, or partnerships, please visit:  
<https://www.ogrzewanie-jelenia.pl>