

# Is base station equipment a communication device





## Overview

---

In the area of wireless computer networking, a base station is a radio receiver/transmitter that serves as the hub of the local wireless network, and may also be the gateway between a wired network and the wireless network. It typically consists of a low-power transmitter and .

What is a base station in a telecommunications network?

A base station is a critical component in a telecommunications network. A fixed transceiver that acts as the central communication hub for one or more wireless mobile client devices. In the context of cellular networks, it facilitates wireless communication between mobile devices and the core network.

What does a base station do?

A base station is a fixed wireless device that serves as a hub for other wireless devices and provides a bridge to another network. In a computer networking context, a base station broadcasts a wireless signal that allows other devices to join a local network.

What is a wireless base station?

In a computer networking context, a base station broadcasts a wireless signal that allows other devices to join a local network. However, the term is also commonly used in the telecommunications industry to refer to cellular towers, wireless landline telephone docks, and other radio transceivers.

How does a base station communicate with a client device?

Generally, if client devices wanted to communicate to each other, they would communicate both directly with the base station and do so by routing all traffic through it for transmission to another device. Base stations in cellular telephone networks are more commonly referred to as cell towers.

Why are base stations important for modern telecommunications?

In summary, base stations are critical for modern telecommunications as they serve as the link between mobile devices and the extensive network



infrastructure that spans the globe. The strategic deployment and ongoing improvement of these stations are essential for maintaining global connectivity.

What equipment does a base station need?

**Control Equipment:** Base stations include control equipment that manages the communication protocols and coordinates the interaction between mobile devices and the network. This equipment ensures that data is routed correctly and efficiently. **Power Supply:** A reliable power supply is essential for the continuous operation of a base station.



## Is base station equipment a communication device

---



### [5G RAN Architecture: Nodes And Components](#)

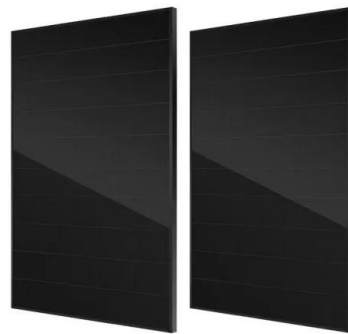
4. Base Station Base Station (BS) is a key component of the 5G Radio Access Network (RAN) architecture that serves as an access point for wireless connections between ...

[Email Contact](#)

### **Unraveling the Mysteries of Cell Towers and Base ...**

In the field of wireless computer networks, a base station is also known as a radio receiver or transmitter that serves the hub of the local wireless network. Also, ...

[Email Contact](#)



### **The Base Station in Wireless Communications: The Key to ...**

Equipped with an electromagnetic wave antenna, often placed on a tall mast, the base station enables communication between mobile terminals (such as mobile phones or ...

[Email Contact](#)

### [Understanding the Basics: What is a Base ...](#)

A base transceiver station (BTS) is designed with several key features that enable it to facilitate wireless communication between mobile ...

[Email Contact](#)



### What is a Base Station in Telecommunications?

Base stations are the backbone of modern telecommunications networks, providing the essential infrastructure for wireless communication. They enable mobile devices to connect to the ...

[Email Contact](#)



### **Types of radio communication equipment , AEROTHAI Business**

The Air-to Ground radio system consists of the following components: 1. The Air-to-ground Base Station (A/G base station) is used for air-to-ground communications within a radius of 200 ...

[Email Contact](#)



### **What is a base station?**

In telecommunications, a base station is a fixed transceiver that is the main communication point for one or more wireless mobile client devices. A base station serves as ...

[Email Contact](#)



## Base station

In the area of wireless computer networking, a base station is a radio receiver/transmitter that serves as the hub of the local wireless network, and may also be the gateway between a wired ...

[Email Contact](#)



## [What is a Base Station in Telecommunications?](#)

Base stations are the backbone of modern telecommunications networks, providing the essential infrastructure for wireless communication. They enable ...

[Email Contact](#)

## What Is A Base Station?

A base station is a piece of equipment that facilitates wireless communication between devices and a network. It contains the necessary hardware and software to transmit ...

[Email Contact](#)



## Base Stations and Cell Towers: The Pillars of Mobile Connectivity

Base stations and cell towers are critical components of cellular communication systems, serving as the infrastructure that supports seamless mobile connectivity. These ...

[Email Contact](#)



## Base Stations and Cell Towers: The Pillars of Mobile ...

Base stations and cell towers are critical components of cellular communication systems, serving as the infrastructure that supports seamless ...

[Email Contact](#)



## Unraveling the Mysteries of Cell Towers and Base Stations

In the field of wireless computer networks, a base station is also known as a radio receiver or transmitter that serves the hub of the local wireless network. Also, it can be a gateway ...

[Email Contact](#)



## The Base Station in Wireless Communications: The ...

Base station, also known as BTS (Base Transceiver Station), is a key device in wireless communication systems such as GSM. Equipped with ...

[Email Contact](#)



## Base station

OverviewComputer networkingLand surveyingWireless communicationsSee also

In the area of wireless computer networking, a base station is a radio receiver/transmitter that serves as the hub of the local wireless network, and may also be the gateway between a wired network and the wireless network. It typically consists of a low-power transmitter and wireless router.



[Email Contact](#)

### Cell Phone Towers -- EITC

- Cell Site (Cellular Base Station or Cell Tower) A cell site, cell tower, or cellular base station is a cellular-enabled mobile device site where antennae and electronic ...

[Email Contact](#)



### Base Station Definition

In a computer networking context, a base station broadcasts a wireless signal that allows other devices to join a local network. However, the term is also commonly used in the ...

[Email Contact](#)

[Digital forensics final exam Flashcards . Quizlet](#)

In a \_\_\_\_\_ hand-off, a cellular communication is conditionally handed off from one base station to another, and the mobile equipment is simultaneously communicating with multiple Base ...

[Email Contact](#)



Energy storage(KWH)

**102.4kWh**

Nominal voltage(Vdc)

**512V**

Outdoor All-in-one ESS cabinet



### Base Transceiver Stations (BTS)

A Base Transceiver Station, commonly known as BTS, is a critical piece of equipment in wireless communication networks. It serves as the primary point ...

[Email Contact](#)





### [Equipment for Your Ham Radio Station](#)

Essential Equipment for a Ham Radio Station  
Setting up a ham radio station requires a few essential pieces of equipment. In this section, we will discuss ...

[Email Contact](#)



### [Key Mobile Network Equipment and Functions](#)

Key Mobile Network Equipment 1. Base Transceiver Station (BTS) / Node B / eNodeB / gNodeB A Base Transceiver Station (BTS) is a critical piece of ...

[Email Contact](#)



### [Radio Base Stations for Secure Communication](#)

What is a Radio Base Station? A radio base station is a critical part of any wireless communication system. It serves as the central hub that connects multiple user devices (such ...

[Email Contact](#)



### **The Base Station in Wireless Communications: The ...**

Equipped with an electromagnetic wave antenna, often placed on a tall mast, the base station enables communication between mobile terminals ...

[Email Contact](#)



## Base Station's Role in Wireless Communication Networks

A base station is a critical component of wireless communication networks. It serves as the central point of a network that connects various devices, such as smartphones, tablets, and computers.

[Email Contact](#)



## Contact Us

---

For catalog requests, pricing, or partnerships, please visit:  
<https://www.ogrzewanie-jelenia.pl>