

# **Is it safe to install a communication base station inverter on the roof**





## Overview

---

Do rooftop antennas cause RF emissions?

When cellular and PCS antennas are mounted on rooftops, RF emissions could exceed higher than desirable guideline levels on the rooftop itself, even though rooftop antennas usually operate at lower power levels than free-standing power antennas. Such levels might become an issue for maintenance or other personnel working on the rooftop.

What if a rooftop transmitting site exceeds FCC limits?

FCC limits for human exposure are based on a safety factor of 10, so even if a rooftop transmitting site exceeds FCC limits, while this could represent a regulatory breach, it still may be safe for firefighters to operate (depending upon signal strength) and how long one is exposed. "Whip antennas."

What is a broadcasting tower?

Broadcasting towers. The larger, permanently mounted antennas are known as broadcasting towers (or masts) and can be found on some of the tallest buildings in North America. They are the most potentially hazardous. These transmit television and FM radio signals to surrounding communities for many, many miles (see photo 6).

What if I'm exposed to antennas over the guidelines?

Exposures exceeding the guidelines levels, however, are only likely to be encountered very close to, and directly in front of, the antennas. In such cases, precautions such as time limits can avoid exposure in excess of the guidelines. Individuals living or working within the building are not at risk.

What if a rooftop antenna is too high?

Such levels might become an issue for maintenance or other personnel working on the rooftop. Exposures exceeding the guidelines levels, however, are only likely to be encountered very close to, and directly in front of, the



antennas. In such cases, precautions such as time limits can avoid exposure in excess of the guidelines.

Should firefighters be aware of roof-mounted transmission devices?

Curtis S.D. Massey discusses the importance for all firefighters and chief officers to be aware of roof-mounted transmission devices and how they might affect their safety during any type of rooftop operation. An example of a properly designed restricted area near UHF antennas on a roof setback.



## Is it safe to install a communication base station inverter on the roof

---

### Utility-Scale ESS solutions



### Where to put a solar inverter

Solar inverters are integral parts of energy production, and understanding their forms is crucial to maximizing your solar installation's effectiveness. Importance of Inverter ...

[Email Contact](#)

### Worried about the cell tower on your building roof? Read this...

If you have a cell phone antenna on the roof of your apartment, you are not under direct threat. The microwave beams are looking outwards and you are most probably in the ...

[Email Contact](#)



### Mobile Phone Base Stations and RF Radiation , IMDA

With a nearer mobile phone base station, a mobile phone will operate at lower RF power when connecting to the mobile phone base station ...

[Email Contact](#)



### [Best Practices for Antenna Placement](#)

The following article features best practices for antenna placement of AES Subscribers, Hybrids, and IP-Links. Proper antenna placement is important to ensure the strength and speed of ...

[Email Contact](#)



### Communication base station

In many residential areas, as long as there is news of building a base station, no matter how the operator explains that the base station radiation meets safety standards, some ...

[Email Contact](#)



### My apartment rented our rooftop to a large mobile carrier who

Based on measurements I took when my cell carrier installed a site on the roof of a building I worked in I would not be concerned in the slightest. Even a couple of feet from the antennas ...

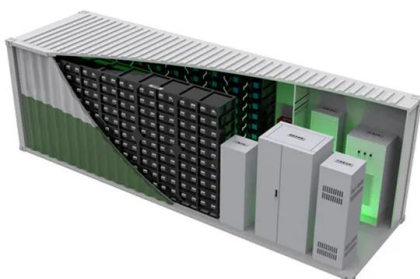
[Email Contact](#)



### The facts and dangers of rooftop transmitters on high-rise

Although Federal Communications Commission (FCC) regulations require roof signage warning of potential danger areas (see signs on page 76), the author has personally ...

[Email Contact](#)





## Human Exposure to Radio Frequency Fields: Guidelines for ...

Primary antennas for transmitting wireless telephone service, including cellular and Personal Communications Service (PCS), are usually located outdoors on towers, water tanks ...

[Email Contact](#)



## [Rules on new mobile phone base stations](#)

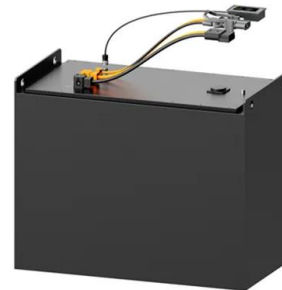
All mobile phone base stations must stay within the safe limits of electromagnetic energy (EME). Telcos can only install a mobile phone base station if they can show it will stay in the safe limits.

[Email Contact](#)

## Worried about the cell tower on your building roof?

If you have a cell phone antenna on the roof of your apartment, you are not under direct threat. The microwave beams are looking outwards ...

[Email Contact](#)



## Harmful Effects of Mobile Towers in Residential Areas

Mobile towers, also known as cell towers or base stations, are structures designed to facilitate wireless communication by transmitting and ...

[Email Contact](#)

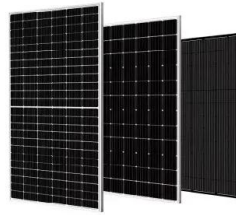




### [Best place for PV inverter and battery?](#)

I am planning on getting a small solar array 9 Trina 395KW panels, 3kw Solis inverter and a 5.2KW Giveenergy battery with AC3.0 charger. I don't have an adjoining garage ...

[Email Contact](#)



### **Inverter And Battery: Safe To Keep In Bedroom? , ShunShelter**

Inverters and batteries can generate heat during operation, and if they malfunction or overheat, there is a risk of fire. The risk of fire can be mitigated by using fire-resistant ...

[Email Contact](#)

### [The Facts and Dangers of Rooftop Transmitting](#) ...

The presence of these transmitters can alter the ways fire departments function on a roof. For instance, some departments automatically ...

[Email Contact](#)



### **tin roof & base antenna questions , WorldwideDX Radio Forum**

The practical aspects of mounting to that metal roof are probably more important that anything else, keeping the thing on there isn't always real simple. A nice firm 'footing'/mounting ...

[Email Contact](#)





### [How Roof Antennas May Be Dangerous.](#)

If a building owner/manager allows a worker to access a roof that has RF levels that exceed the allowable exposure limits, the station owners can be assessed significant fines ...

[Email Contact](#)



### **How to make wind solar hybrid systems for telecom ...**

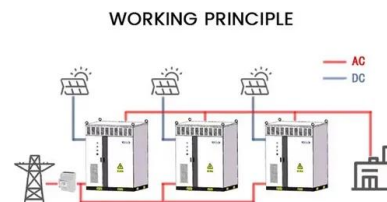
Wind solar hybrid systems can fully ensure power supply stability for remote telecom stations. Meet the growing demand for communication services.

[Email Contact](#)

### **solar power for Base station**

The solar power for base station solution provides an economical and efficient energy solution for communication base stations, reducing operating costs, emissions, and improving energy ...

[Email Contact](#)



### [Safe Operations Near Roof Cellular Base Stations](#)

This article will help you attain an increased awareness while operating in or around rooftop cellular base stations on two- or three-story multiple dwellings.

[Email Contact](#)

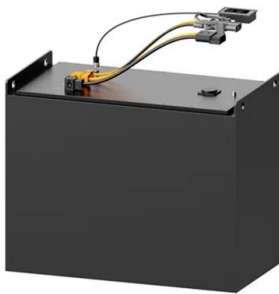




## My apartment rented our rooftop to a large mobile carrier who

Based on measurements I took when my cell carrier installed a site on the roof of a building I worked in I would not be concerned in the slightest. Even a couple of feet from the antennas ...

[Email Contact](#)



## Harmful Effects of Mobile Towers in Residential Areas

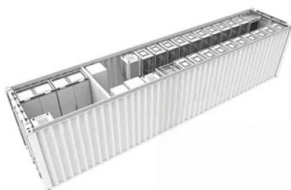
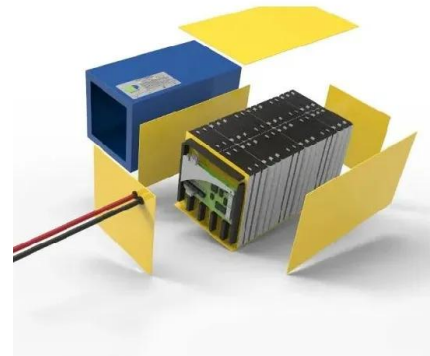
While the presence of mobile towers in residential neighborhoods ensures reliable connectivity for residents, concerns have been raised about potential health risks associated ...

[Email Contact](#)

## Harmful Effects of Mobile Towers in Residential Areas

While the presence of mobile towers in residential neighborhoods ensures reliable connectivity for residents, concerns have been raised about ...

[Email Contact](#)



## Enhancing Inverter Protection Best Practices for Outdoor ...

In some field installations, the communication line, AC line, ground cable and other cables have protective sleeves outside, one end of which extends to the inverter wiring bin, ...

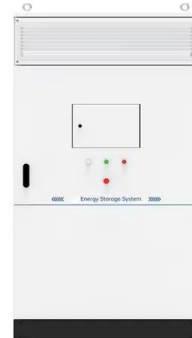
[Email Contact](#)



## The Facts and Dangers of Rooftop Transmitting Devices on

The presence of these transmitters can alter the ways fire departments function on a roof. For instance, some departments automatically send a team to the roof on any working ...

[Email Contact](#)



## The facts and dangers of rooftop transmitters on high ...

Although Federal Communications Commission (FCC) regulations require roof signage warning of potential danger areas (see signs on page 76), ...

[Email Contact](#)

## Contact Us

---

For catalog requests, pricing, or partnerships, please visit:  
<https://www.ogrzewanie-jelenia.pl>