

Lead-acid battery 12v inverter





Overview

How much current does a 12V inverter draw from a battery?

The current draw depends on the battery voltage. Most readers of my website will have a 12V battery, so we will use 12V as an example. $1,000W/12V = 83A$ The inverter will draw a current of 83A from the battery. If we repeat the same calculations for a 24V and 48V battery system: $1,000W/24V = 41A$
 $1,000W/48V = 20A$.

How do I choose the right inverter battery?

When it comes to choosing the right inverter battery for your needs, the decision usually boils down to two main types: lead acid batteries and lithium batteries which each have a system of pros, cons and cons. The point of this blog is to separate these differences and help you settle on education options on your specific prerequisites.

How many 12V 100Ah batteries do I Need?

Lead-acid According to the C-rate (step 2) of a single 12V 100Ah lead-acid battery, we can only draw 20A. To maximize the lead-acid battery life, we need four 12V 100Ah batteries.

How many 12V 100Ah batteries can be connected in parallel?

This is how: 12V 100Ah battery * 4 in parallel = 12V 400Ah battery 400Ah * 0.2C = 80A of current draw The current draw of 83 Amps matches the current draw of the C-rate. We will have to connect four 12V 100Ah lead-acid batteries in parallel. Lithium We can have a higher current with lithium because lithium batteries have low internal resistance.

How many amps does a 12V 100Ah battery draw?

According to the C-rate (step 2) of a single 12V 100Ah lead-acid battery, we can only draw 20A. To maximize the lead-acid battery life, we need four 12V 100Ah batteries. This is how: 12V 100Ah battery * 4 in parallel = 12V 400Ah



battery $400\text{Ah} * 0.2\text{C} = 80\text{A}$ of current draw The current draw of 83 Amps matches the current draw of the C-rate.

Are lithium batteries better than lead-acid batteries?

Maintenance Requirements: Lithium batteries are typically maintenance-free, unlike some lead-acid options, which might require regular water top-up. Cost-Effectiveness: For large-scale deployments, lead-acid batteries might be more financially viable especially when considering the lead-acid battery 12V options.



Lead-acid battery 12v inverter



[NPP NPD12-120Ah \(T16, 2 Pcs\) 12V 120Ah AGM Deep Cycle ...](#)

The NPD12-150Ah Sealed Lead Acid AGM Deep Cycle Battery is made with heavy duty lead calcium grids with 10+ years of floating design life. The NPD series is ideal for ...

[Email Contact](#)

[Which Battery is Best for Solar Inverter: A Comprehensive ...](#)

Looking to choose the best battery for your solar inverter? This comprehensive guide simplifies the selection process by comparing lead-acid and lithium-ion batteries while ...



[Email Contact](#)



[Delkor Royal 1150k 12V 105Ah Lead Acid Battery ...](#)

Delkor 1150K/31-800 Semi-Sealed, Lead Acid, Maintenance Free Standby Battery 12 Volts (12V) 105Ah / 102Ah Semi Sealed Maintenance Free PLEASE ...

[Email Contact](#)

[Why Should You Choose Lead Acid Batteries for Your ...](#)

Although the technology behind a lead-acid battery is about 160 years old, they are still so much in demand because they are reliable, robust, ...



[Email Contact](#)



[NPD 12V 200Ah Deep Cycle Battery with T16 Terminals, 12Volt ...](#)

Excellent Safty: NPP Lead-acid battery utilizes AGM technology, which is maintenance-free and leak-proof during use. The case is made of ABS material, offering ...

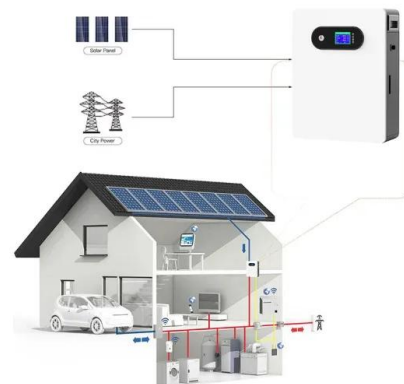
[Email Contact](#)



[Why Should You Choose Lead Acid Batteries for Your Inverters?](#)

Although the technology behind a lead-acid battery is about 160 years old, they are still so much in demand because they are reliable, robust, and affordable. Now, let's look at ...

[Email Contact](#)



[NPD 12V 200Ah Deep Cycle Battery with T16 Terminals, 12Volt ...](#)

About this item Excellent Safty: NPP Lead-acid battery utilizes AGM technology, which is maintenance-free and leak-proof during use. The case is made of ABS material, offering strong resistance to impact. Long Service Life: NPD 12V 200Ah SLA rechargeable Battery upto 1200 ...

[Email Contact](#)





[NPP NPD12-120Ah \(T16, 2 Pcs\) 12V 120Ah AGM Deep Cycle Sealed Lead Acid](#)

The NPD12-150Ah Sealed Lead Acid AGM Deep Cycle Battery is made with heavy duty lead calcium grids with 10+ years of floating design life. The NPD series is ideal for ...

[Email Contact](#)



Battery / Batteries Lead Acid, Deep Cycle, AGM, Lithium LiFePO4 12V ...

Our products include Valve Regulated Lead Acid (VRLA) with Absorbed Glass Mat (AGM) Technology Semi-Sealed Lead Acid, Maintenance Free Batteries Deep Cycle and Marine ...

[Email Contact](#)

[How Many Batteries For A 1000 Watt Inverter?? ± Diagrams](#)

Choosing the right battery for your battery inverter is critical for ensuring reliable backup power, whether for your home, business, or off-grid ...

[Email Contact](#)



[How Many Batteries For A 1000 Watt Inverter?? ± Diagrams](#)

You need one 12V 100Ah battery or four 12V 100Ah lead-acid batteries in parallel to run a 1,000W inverter. We have also calculated the runtime of the inverter with a fridge which ...

[Email Contact](#)



[Which Battery Is Best for an Inverter? - leaptrend](#)

Choosing the right battery for your battery inverter is critical for ensuring reliable backup power, whether for your home, business, or off-grid setup. The ideal battery must ...

[Email Contact](#)



[9 Best Off-grid Inverters \(Complete 2025 List\)](#)

Output AC power: 1.3kW continuous - 3kW peak
Max. inverter efficiency: 92% Max. PV input power: 700W Solar charge controller efficiency: 98% Battery Voltage: 12V ...

[Email Contact](#)

[NPP NPD12-120Ah \(T16, 2 Pcs\) 12V 120Ah AGM Deep Cycle Sealed Lead Acid](#)

Buy NPP NPD12-120Ah (T16, 2 Pcs) 12V 120Ah AGM Deep Cycle Sealed Lead Acid Rechargeable Battery for UPS,RV, Off-Grid Solar and Inverter, Marine,Pure Sine Wave ...

[Email Contact](#)



[12V 100Ah 1280Wh Lithium Battery - Small Inverters ...](#)

Our 12V 100Ah 1280Wh Lithium Battery is ideal for use as the energy storage battery for small to medium size inverters. Featuring an integrated battery ...

[Email Contact](#)

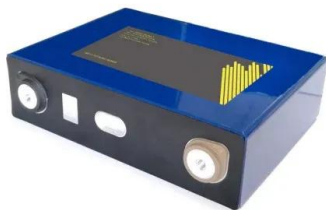




[NAKS 12V 14Ah Lead Acid Battery for EV, UPS ...](#)

NAKS 12V 14Ah Lead Acid Battery for EV, UPS, Inverter, Solar 14 Ah Battery for All Vehicles at best prices with FREE shipping & cash on delivery. Only ...

[Email Contact](#)



[lead acid battery Prices , Compare Prices & Shop Online](#)

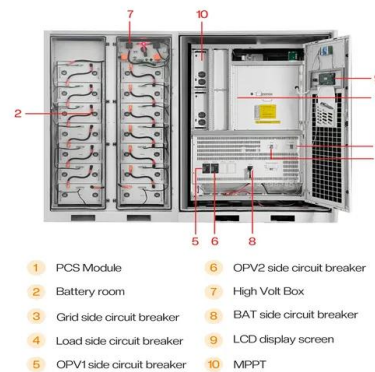
lead acid battery Prices , Compare Prices & Shop Online , PriceCheckScoop's 12V Sealed Acid Battery allows for back-up power in the case of loss of power to the client site or high ...

[Email Contact](#)

[Best Lead Acid Battery For Inverter \[Updated: August 2025\]](#)

The landscape for choosing the best lead acid battery for your inverter changed dramatically when advanced battery management tools entered the picture. Having tested ...

[Email Contact](#)



[Lead-Acid vs. Lithium Batteries: Choosing the Right Inverter Battery](#)

Delve into our blog to uncover the nuances between lead acid and lithium batteries for your inverter needs. Make an educated decision for your energy solution.

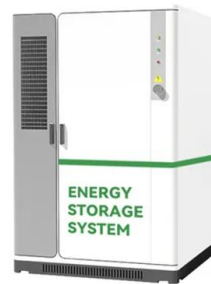
[Email Contact](#)



[Interfacing Lead Acid batteries with inverter](#)

Inverter should track amp hours in/out, also consider instantaneous voltage and current, to determine SoC. Accuracy of algorithms will vary. The inverter should have low ...

[Email Contact](#)



[How Long Will a Battery Last With an Inverter?](#)

The following table shows how long can a battery run a 2000-watt inverter at full load with 95% efficiency: Battery Capacity (Ah)Lead Acid ...

[Email Contact](#)

[What Is A 12V Inverter Battery?](#)

What defines a 12V inverter battery? A 12V inverter battery is characterized by deep-cycle design, enabling repetitive 50-80% DoD without damage. Unlike starter batteries, ...

[Email Contact](#)



[How Many Batteries For A 1000 Watt Inverter?? + Diagrams](#)

To maximize the lead-acid battery life, we need four 12V 100Ah batteries. This is how: 12V 100Ah battery * 4 in parallel = 12V 400Ah battery. 400Ah * 0.2C = 80A of current ...

[Email Contact](#)



[Lead-Acid vs. Lithium Batteries: Choosing the Right ...](#)

Delve into our blog to uncover the nuances between lead acid and lithium batteries for your inverter needs. Make an educated decision for your energy ...

[Email Contact](#)



[NPD 12V 200Ah Deep Cycle Battery with T16 Terminals, 12Volt ...](#)

Excellent Safty: NPP Lead-acid battery utilizes AGM technology, which is maintenance-free and leak-proof during use. The case is made of ABS material, offering strong resistance to impact. Long Service Life: NPD 12V 200Ah SLA rechargeable Battery upto 1200 cycles.

[Email Contact](#)

Contact Us

For catalog requests, pricing, or partnerships, please visit:
<https://www.ogrzewanie-jelenia.pl>