

Mobile base station equipment battery





Overview

Which battery is best for telecom base station backup power?

Among various battery technologies, Lithium Iron Phosphate (LiFePO₄) batteries stand out as the ideal choice for telecom base station backup power due to their high safety, long lifespan, and excellent thermal stability.

What is a mobile phone base station?

A mobile phone base station is a telecommunications infrastructure used to send and receive RF signals from mobile phones. The frequencies used typically range from 900 MHz to 2.45 GHz, with powers varying from 1 W for indoor antennas to 40 W for those at high elevations.

What makes a telecom battery pack compatible with a base station?

Compatibility and Installation Voltage Compatibility: 48V is the standard voltage for telecom base stations, so the battery pack's output voltage must align with base station equipment requirements. Modular Design: A modular structure simplifies installation, maintenance, and scalability.

How do you protect a telecom base station?

Backup power systems in telecom base stations often operate for extended periods, making thermal management critical. Key suggestions include:
Cooling System: Install fans or heat sinks inside the battery pack to ensure efficient heat dissipation.

What makes a good battery management system?

A well-designed BMS should include:
Voltage Monitoring: Real-time monitoring of each cell's voltage to prevent overcharging or over-discharging.
Temperature Management: Built-in temperature sensors to monitor the battery pack's temperature, preventing overheating or operation in extreme cold.



Mobile base station equipment battery

[Communication Base Station Backup Battery](#)



High-capacity energy storage solutions, specifically designed for communication base stations and weather stations, with strong weather resistance to ensure continuous operation of ...

[Email Contact](#)

[CTECHI 5G Telecom Base Station Battery 48V 50Ah ...](#)

CTECHI 5G Telecom Base Station Battery 48V 50Ah Power System Solution UPS Backup Battery
The CTECHI 50Ah 48V LiFePO4 Battery is a high ...

[Email Contact](#)



[CTECHI 5G Telecom Base Station Battery 48V 50Ah Power](#)

Key Features: Reliable Backup Power: Provides dependable power supply during outages, ensuring uninterrupted operation of 5G base stations and UPS systems. Long Lifespan: ...

[Email Contact](#)

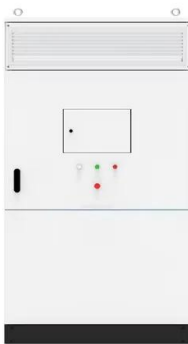
Microsoft Word

Second, the equipment used within a P25 base station now includes commercial-grade switches, routers, firewalls, trunking repeaters, Rx multi-couplers, and Tx combiners. Much of the P25 ...

[Email Contact](#)



FLEXIBLE SETTING OF MULTIPLE WORKING MODES



[The 7 Best Portable Power Stations of 2025](#)

Bring big backup power with you with these expert-recommended portable power stations, which can store enough power to charge electronics, appliances, and more.

[Email Contact](#)

[How to Select the Best ESTEL Battery Backup for Base Stations](#)

Choose the best telecom battery backup systems by evaluating capacity, battery type, environmental adaptability, maintenance, and scalability for base stations.

[Email Contact](#)



[TETRA MTS1 Base Station Specification Sheet](#)

A SMALL, RUGGED AND EASILY DEPLOYABLE SOLUTION The MTS1 TETRA base station is a small, rugged and easily deployable solution for indoor and outdoor coverage applications. ...

[Email Contact](#)



What to Know About OEM Rack-Mounted Lithium Batteries for Telecom Base

OEM rack-mounted lithium batteries are crucial for powering telecom base stations, providing reliable and efficient energy solutions.

[Email Contact](#)



[Communication Base Station Backup Battery](#)

Communication base station backup batteries are designed to provide a consistent and reliable power supply during electricity outages. This ensures uninterrupted communication services, ...

[Email Contact](#)



Mobile base station

A mobile base station, also called a base transceiver station (BTS), is a fixed radio transceiver in any mobile communication network or wide area network (WAN). The base station connects ...

[Email Contact](#)



[Telecom Base Station Backup Power Solution: Design Guide for ...](#)

Discover the 48V 100Ah LiFePO4 battery pack for telecom base stations: safe, long-lasting, and eco-friendly. Optimize reliability with our design guide.

[Email Contact](#)





[DIY Mobile Base Station Conversion Guide](#)

Disclaimer! The content of this document accurately represents how we have successfully approached increasing the portability of virtual fence base stations, but users should ...

[Email Contact](#)



[Choosing a 12V Battery for Your Mobile Base Station](#)

For most mobile base station applications, AGM or Gel batteries offer a good balance of performance, maintenance, and cost. Li-ion batteries are a premium option with superior ...

[Email Contact](#)

[External Trimble/Topcon Base Station 12V Brick Battery Kit](#)

Smaller, Lighter and Easier GPS Base Battery Options! External Trimble/Topcon Base Station 12V Brick Battery Kit - Car Battery Alternative!

[Email Contact](#)



[External Trimble/Topcon Base Station 12V Brick Battery Kit](#)

Smaller, Lighter and Easier GPS Base Battery Options! External Trimble/Topcon Base Station 12V Brick Battery Kit - Car Battery Alternative!

[Email Contact](#)



[CTECHI 5G Telecom Base Station Battery 48V 50Ah ...](#)

Key Features: Reliable Backup Power: Provides dependable power supply during outages, ensuring uninterrupted operation of 5G base stations and UPS ...

[Email Contact](#)



[Securing UAV Flying Base Station for Mobile ...](#)

More specifically, the flying base station's user-dependent positioning, its battery-constrained power, and the dynamic and distributed ...

[Email Contact](#)

[\(PDF\) Design of Solar System for LTE Networks](#)

Rapid growth in mobile networks and the increase of the number of cellular base stations requires more energy sources, but the traditional ...

[Email Contact](#)



[What to Know About OEM Rack-Mounted Lithium Batteries for ...](#)

OEM rack-mounted lithium batteries are crucial for powering telecom base stations, providing reliable and efficient energy solutions.

[Email Contact](#)





[Communication Base Station Backup Battery](#)

Communication base station backup batteries are designed to provide a consistent and reliable power supply during electricity outages. This ensures ...

[Email Contact](#)



[Optimum sizing and configuration of electrical system for](#)

The rising demand for cost effective, sustainable and reliable energy solutions for telecommunication base stations indicates the importance of integration and exploring the ...

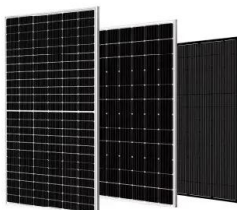
[Email Contact](#)

Military & Mobile Power

Our batteries provide a consistent and dependable power source for critical equipment, communication systems, and field operations, ensuring mission continuity in challenging ...

[Email Contact](#)

- LiFePO₄
- Wide temp: -20°C to 55°C
- Easy to expand
- Floor mount&wall mount
- Intelligent BMS
- Cycle Life:≥6000
- Warranty :10 years



[Telecom Base Station Backup Power Solution: Design...](#)

Discover the 48V 100Ah LiFePO₄ battery pack for telecom base stations: safe, long-lasting, and eco-friendly. Optimize reliability with our ...

[Email Contact](#)



Telecom Base Station Battery

Our Telecom Base Station Battery Solutions are designed to provide reliable power support for Telecommunications base stations, ensuring continuous operation and optimal performance.

[Email Contact](#)



Low cost solar base station

Low-cost solar base stations As Mobile Network Operators strive to increase their subscriber base, they need to address the "Bottom of the Pyramid" segment of ...

[Email Contact](#)

Contact Us

For catalog requests, pricing, or partnerships, please visit:
<https://www.ogrzewanie-jelenia.pl>