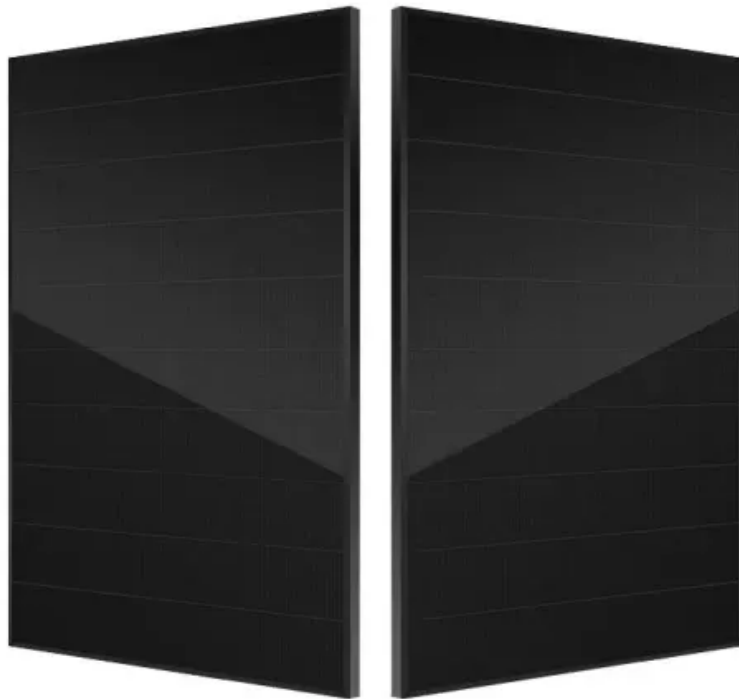


Network base station communication





Overview

In the area of wireless computer networking, a base station is a radio receiver/transmitter that serves as the hub of the local wireless network, and may also be the gateway between a wired network and the wireless network. It typically consists of a low-power transmitter and .

What is a base station in a telecommunications network?

A base station is a critical component in a telecommunications network. A fixed transceiver that acts as the central communication hub for one or more wireless mobile client devices. In the context of cellular networks, it facilitates wireless communication between mobile devices and the core network.

How does a wireless device communicate with a base station?

When a wireless device, such as a mobile phone, communicates with a base station, the device sends a signal to the base station, which converts the signal into digital form and sends it to the network. Similarly, when the network sends data to the device, the base station converts the digital data into a wireless signal that the device can receive.

What does a base station do?

Base stations are responsible for transmitting and receiving data to and from wireless devices, as well as managing network resources and ensuring reliable and efficient communication. The basic function of a base station is to convert wireless signals into digital signals that can be transmitted over a wired network infrastructure.

How does a base station communicate with a client device?

Generally, if client devices wanted to communicate to each other, they would communicate both directly with the base station and do so by routing all traffic through it for transmission to another device. Base stations in cellular telephone networks are more commonly referred to as cell towers.

Why are base stations important for modern telecommunications?



In summary, base stations are critical for modern telecommunications as they serve as the link between mobile devices and the extensive network infrastructure that spans the globe. The strategic deployment and ongoing improvement of these stations are essential for maintaining global connectivity.

What is a base station in a Wi-Fi network?

In Wi-Fi data networks, the client devices connect to a base station. These are generally referred to as wireless access points, access points or -- informally -- routers. The access point will then send the Wi-Fi radio transmission to a wired network. Two-way radio, also known as citizens band radio or ham radio, also use base stations.



Network base station communication



Base transceiver station

The network can be that of any of the wireless communication technologies like GSM, CDMA, wireless local loop, Wi-Fi, WiMAX or other wide area network (WAN) technology. BTS is a part ...

[Email Contact](#)

Base Station's Role in Wireless Communication Networks

The base station transmits and receives signals, ensuring seamless communication over radio frequencies. In essence, it acts as the intermediary between the user and the network, ...

[Email Contact](#)



Base Stations

Base stations form a key part of modern wireless communication networks because they offer some crucial advantages, such as wide coverage, continuous communications and ...

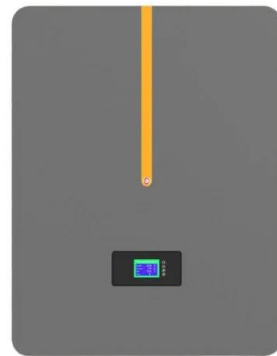
[Email Contact](#)



What is Base Station?

Nowadays, networking has become a crucial part of our daily lives. To implement network services for users, base station plays an essential role to constitute a ...

[Email Contact](#)



[IoT Glossary: Base Station Controller Explained](#)

Summary A base station is a radio receiver which may have one or multiple antenna. It was first used in mobile telecommunication networks. The base station is ...

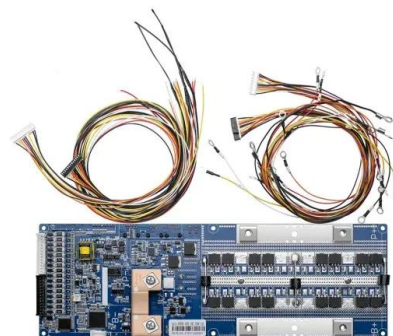
[Email Contact](#)



What is the function of the Base Transceiver Station ...

The Base Transceiver Station (BTS) is a critical component of the cellular network architecture, particularly in the GSM (Global System for ...

[Email Contact](#)



[What is a Base Station in Telecommunications?](#)

Discover the role and functionality of a base station in telecommunications networks. Learn how these critical components manage communication between mobile devices and the network, ...

[Email Contact](#)





What Is Base Station in Mobile Communication? - The Heart of Networks

At the heart of this system lies the base station, a crucial component that enables seamless communication between mobile devices and the network. In this blog post, we will ...

[Email Contact](#)



Traffic Prediction of Mobile Communication Base Station

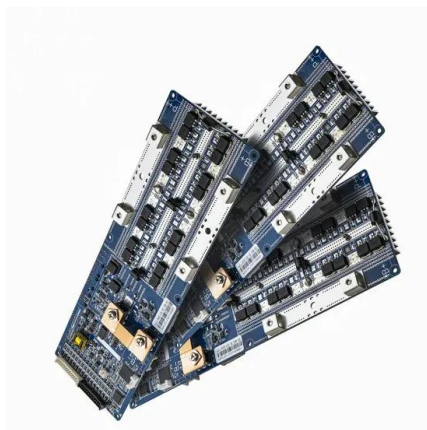
Simultaneously, in the age of big data information, it is possible to obtain real-time feedback of base station traffic data. By acquiring information about traffic changes in mobile ...

[Email Contact](#)

Cellular Networks: The Backbone of Wireless Communication

Cellular network is a wireless communication system that uses distributed base stations to provide connectivity to mobile devices within specific geographic areas.

[Email Contact](#)



Understanding the Base Station Subsystem: A Comprehensive ...

The Base Station Subsystem (BSS) manages communication between mobile devices and networks, ensuring efficient call control, data transmission, and seamless ...

[Email Contact](#)



[What Are Base Station Antennas? Complete Guide](#)

In modern telecommunications systems, the base station antenna stands out as an undeniable and crucial component to facilitate our daily ...

[Email Contact](#)



Base station

In the area of wireless computer networking, a base station is a radio receiver/transmitter that serves as the hub of the local wireless network, and may also be the gateway between a wired ...

[Email Contact](#)



What Is the Role of a Base Station in Wireless Communication?

Base stations are critical components in wireless communication networks, serving as the intermediary between mobile devices and the core network. They play a vital role in ...

[Email Contact](#)



Mobile base station

A mobile base station, also called a base transceiver station (BTS), is a fixed radio transceiver in any mobile communication network or wide area network (WAN). The base station connects ...

[Email Contact](#)





What Is A Base Station?

A base station is an integral component of wireless communication networks, serving as a central point that manages the transmission and reception of signals between ...

[Email Contact](#)



[What Are Base Station Antennas? Complete Guide](#)

In modern telecommunications systems, the base station antenna stands out as an undeniable and crucial component to facilitate our daily communication from voice calls to ...

[Email Contact](#)

Energy-Efficient Base Station Deployment in Heterogeneous Communication

With the advent of the 5G era, mobile users have higher requirements for network performance, and the expansion of network coverage has become an inevitable trend. Deploying micro base ...

[Email Contact](#)



What is the function of a Base Transceiver Station ...

A Base Transceiver Station (BTS) is a fundamental component in a GSM (Global System for Mobile Communications) network, serving as the ...

[Email Contact](#)



Base station

OverviewComputer networkingLand surveyingWireless communicationsSee also

In the area of wireless computer networking, a base station is a radio receiver/transmitter that serves as the hub of the local wireless network, and may also be the gateway between a wired network and the wireless network. It typically consists of a low-power transmitter and wireless router.

[Email Contact](#)



[What is a Base Station in Telecommunications?](#)

Discover the role and functionality of a base station in telecommunications networks. Learn how these critical components manage communication ...

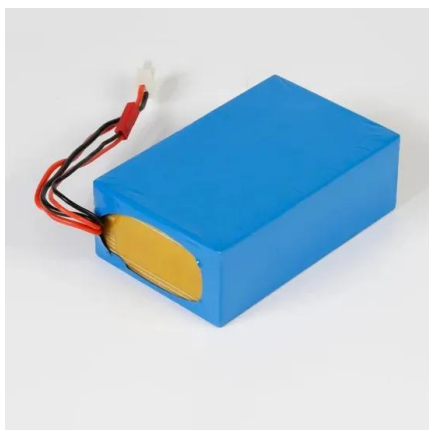
[Email Contact](#)



Satellite Communication Protocols and Ground Stations

In satellite communication networks, earth stations serve crucial roles such as telemetry, tracking, and command, gateway services, direct ...

[Email Contact](#)



What is a base station?

A base station serves as a central connection point for a wireless device to communicate. It further connects the device to other networks or devices, usually through ...

[Email Contact](#)



Contact Us

For catalog requests, pricing, or partnerships, please visit:
<https://www.ogrzewanie-jelenia.pl>