

New energy battery cabinet height from ground





Overview

How much space do you need for a battery system?

Spaces about battery systems shall comply with 110.26. Working space shall be measured from the edge of the battery cabinet, racks, or trays. For battery racks, there shall be a minimum clearance of 25 mm (1 in.) between a cell container and any wall or structure on the side not requiring access for maintenance.

What is the minimum clearance for a battery rack?

For battery racks, there shall be a minimum clearance of 25 mm (1 in.) between a cell container and any wall or structure on the side not requiring access for maintenance. Battery stands shall be permitted to contact adjacent walls or structures, provided that the battery shelf has a free air space for not less than 90 percent of its length.

What are the requirements for a battery location?

Battery locations shall conform to 480.9 (A), (B), and (C). (A) Ventilation. Provisions appropriate to the battery technology shall be made for sufficient diffusion and ventilation of gases from the battery, if present, to prevent the accumulation of an explosive mixture. (B) Live Parts. Guarding of live parts shall comply with 110.27.

What is the battery energy storage system guidebook?

NYSERDA published the Battery Energy Storage System Guidebook, most-recently updated in December 2020, which contains information and step-by-step instructions to support local governments in New York in managing the development of residential, commercial, and utility-scale BESS in their communities.

Are battery safety standards adequate?

However, the DNV GL report concluded that the most commonly relied-upon



standards for battery safety are insufficient to address the threat of thermal runaway (described herein) and explosion. The report recommends additional steps that should be taken, and these are included in the summary below.

Do top terminal batteries need ventilation?

Working space must be provided, based on NEC Table 110.34. Ventilation is always required for top terminal batteries. Ventilation is never required for top terminal batteries. Please register or sign in for electrical continuing education courses. Answered: None Yet!



New energy battery cabinet height from ground



New York Battery Energy

New York Battery Energy Storage System Guidebook In 2019, New York passed the nation-leading Climate Leadership and Community Protection Act (Climate Act), which codified ...

[Email Contact](#)

[What is the height of the energy storage battery compartment?](#)

The height of the energy storage battery compartment varies widely depending on several factors including the type of battery technology employed, the manufacturer's ...

[Email Contact](#)



[Utility-scale battery energy storage system \(BESS\)](#)

Introduction Reference Architecture for utility-scale battery energy storage system (BESS) This documentation provides a Reference Architecture for power distribution and conversion - and ...

[Email Contact](#)

[Tips for Designing Battery Cabinets/Enclosures.](#) [SBS Battery](#)

This is all necessary information for determining the minimum length, width and height of the enclosure. There may be multiple ways to configure the cabinet, so consider all possible options.





[Email Contact](#)



- ☒ IP65/IP55 OUTDOOR CABINET
- ☒ OUTDOOR MODULE CABINET
- ☒ OUTDOOR 5G BASE STATION CABINET
- ☒ WATERPROOF



[5 Steps to Design Your Outdoor Battery Cabinet](#)

Design your outdoor battery cabinet with these 5 steps: choose the right size, materials, cooling, safety features, and ensure easy maintenance.

[Email Contact](#)

[importance of earthing a rack battery and its cabinet](#)

I was thinking to connect each battery (ie its metal body) via the screw on the front face showing the earth logo, all to the rack cabinet earth ...

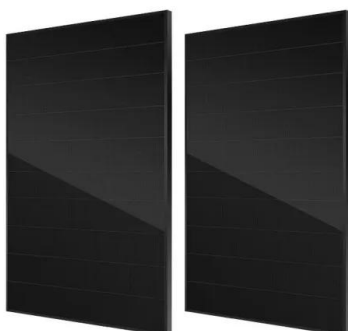
[Email Contact](#)



[Siting and Safety Best Practices for Battery Energy Storage ...](#)

Height: Any building height limits in applicable zoning regulations should be applied to the BESS. Fencing/enclosure: Unless secured within a dedicated-use building, all BESS components and ...

[Email Contact](#)





[What is the height of the energy storage battery](#)

...

The height of the energy storage battery compartment varies widely depending on several factors including the type of battery technology

...

[Email Contact](#)



[Where can the battery system be installed? What are the ...](#)

Spacing Requirements for Ground-Mounted Batteries: Each battery occupies a 3ft x 3ft area and is just over 36 inches tall, which is crucial for planning installation space appropriately. The ...

[Email Contact](#)

[Energy Storage Cabinets: Key Components. Types, ...](#)

Lithium-ion battery cabinets are popular for their high energy density, long cycle life, and efficiency, making them suitable for both ...

[Email Contact](#)



[Battery ground clearance \(inside garage\). Information by ...](#)

Some ESS (such as Enphase) have dimensions that allow for two rows of equipment on a wall but the height of a typical garage wall may be a constraint to where you ...

[Email Contact](#)



It is easy to install and stable in operation. Hot Tags : deye battery cabinet ess battery cabinet lithium battery cabinet lithium battery storage cabinet battery storage cabinet industrial ...

[Email Contact](#)



[To Reduce E-Battery Fires, NYC DOT Announces Property ...](#)

Additionally, each cabinet will need to comply with new size and installation requirements. NYC DOT published Sidewalk E-Bike Battery Swapping and Charging Cabinets ...

[Email Contact](#)

[importance of earthing a rack battery and its cabinet](#)

It's not likely, but in general all power metal enclosures should have one or more earth ground connection point, and they should all be ...

[Email Contact](#)



[New energy battery cabinet height from ground](#)

HIS-Energy's Premium Battery Cabinet Solution: Engineered for Both Outdoor (IP54 Rated) and Indoor Installations. From peak shaving and emergency power supply to powering EV ...

[Email Contact](#)



[Where should I install off grid solar battery systems?](#)

Off grid solar battery systems requires certain environmental conditions for optimal function and long service life. We give you tips for the best installation location.

[Email Contact](#)



480.9 Battery Locations.

Working space shall be measured from the edge of the battery cabinet, racks, or trays. For battery racks, there shall be a minimum clearance of 25 mm (1 in.) ...

[Email Contact](#)

[ELECTRIC METERING COMMERCIAL & INDUSTRIAL](#)

2.0 SCOPE This standard provides detailed information for installation of electrical metering (0-600 volts) in Commercial and Industrial (C/I) applications.

[Email Contact](#)



[Where should I install off grid solar battery systems?](#)

Off grid solar battery systems requires certain environmental conditions for optimal function and long service life. We give you tips for the best installation ...

[Email Contact](#)



[Best Practices and Considerations for Siting Battery Storage ...](#)

Will the battery storage system be protected from natural disasters and severe weather events (e.g. hurricanes, floods, hail)? o The site should confirm what the 500-year flood level is and ...

[Email Contact](#)



[importance of earthing a rack battery and its cabinet](#)

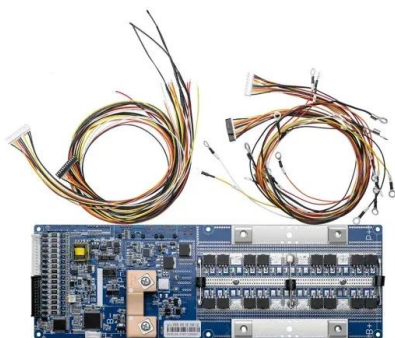
It's not likely, but in general all power metal enclosures should have one or more earth ground connection point, and they should all be connected to a nearby grounding rod. ...

[Email Contact](#)

[Server Rack Cabinets for Pylontech Batteries and ...](#)

Looking for a server rack cabinet for your 24V or 48V Pylontech US2500, 2000C, US3000C or US5000 lithium battery trays? Read our guide ...

[Email Contact](#)



[The BESS System: Construction, Commissioning, and ...](#)

A comprehensive guide on the construction, commissioning, and operation & maintenance of industrial and commercial energy storage systems.

[Email Contact](#)



480.9 Battery Locations.

Working space shall be measured from the edge of the battery cabinet, racks, or trays. For battery racks, there shall be a minimum clearance of 25 mm (1 in.) between a cell container and any ...

[Email Contact](#)



Contact Us

For catalog requests, pricing, or partnerships, please visit:
<https://www.ogrzewanie-jelenia.pl>