

Overseas 3G communication base station EMS





Overview

Do mobile phones need a base station?

Mobile phones and other mobile devices require a network of base stations in order to function. The base station antennas transmit and receive RF (radio frequency) signals, or radio waves, to and from mobile phones near the base station. Without these radio waves, mobile communications would not be possible.

How much exposure can a radio base station have?

On the ground, in houses, and other places where people reside, the exposure levels from radio base stations are normally below 1 percent of the limits. Only in the close vicinity of the antennas can the exposure limits sometimes be exceeded.

What is a mobile phone base station?

A mobile phone base station provides coverage to a geographic area known as a “cell”. Cells are aligned next to each other in a similar pattern to a honeycomb, and it is for this reason that mobile phone networks are sometimes referred to as “cellular” networks.

What is a base station in radio communications?

In radio communications, a base station is a wireless communications station installed at a fixed location and used to communicate as part of one of the following: a wireless telephone system such as cellular CDMA or GSM cell site. Base stations use RF power amplifiers (radio-frequency power amplifiers) to transmit and receive signals.

How does a mobile phone connect to a base station?

The first step in the process is for the phone to check that there is coverage in the area that the call is made. Once the phone has verified that there is sufficient signal strength to make the call, the phone establishes a connection



with a nearby mobile phone base station.

What happens if a phone is handed over to a base station?

There is usually a smooth transition or 'handover' from cell to cell. During the duration of a call, the phone may have handed over to and from a number of base stations. If there is no adjoining base station, such as on the fringes of the mobile phone network, the call will drop out.



Overseas 3G communication base station EMS



[5G, human exposure to electromagnetic fields \(EMF\) and health](#)

There is no evidence that electromagnetic fields from existing (2G, 3G and 4G) mobile networks pose any health risks, provided that administrations enforce the exposure limits established by ...

[Email Contact](#)

Base Station

A fixed station that uses radio waves to communicate with mobile devices. It serves as the link between the user's device and the carrier's network. Base stations range in size and area of

[Email Contact](#)



[EMS System Communications - georgiaemsacademy](#)

The base station radio generally sits on a desk and is programmed to transmit with increased power to overcome any obstacles or distance that could affect signal propagation.

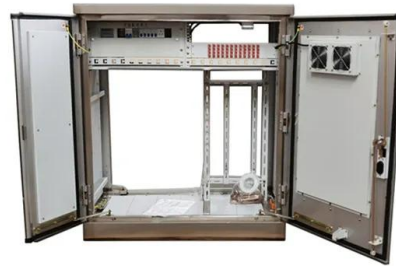
[Email Contact](#)

[Transportable base station for emergency ...](#)

ASTRI has succeeded in producing a mobile base station that allows for cost-efficient, low-latency, and stable mission-critical mobile broadband ...

[Email Contact](#)





Applications



[IFSTA Chapter 2: Communications Flashcards . Quizlet](#)

The federal agency that has jurisdiction over interstate and international telephone and telegraph services and satellite communications, all of which may involve EMS activity.

[Email Contact](#)

[Fourth International Conference on 3G Mobile Communication...](#)

Article item 2003 Fourth International Conference on 3G Mobile Communication Technologies A novel single base station mobile location algorithm: description and validation using a ...

[Email Contact](#)



EMSCOM

Provide a base station communications back-up for dispatching, direct phone line patching and coordinating EMS information in cases where local base station control fails or is not available.

[Email Contact](#)





Base station

In professional two-way radio systems, a base station is used to maintain contact with a dispatch fleet of hand-held or mobile radios, and/or to activate one-way paging receivers. The base ...

[Email Contact](#)



To Strive forward No Energy Waste



- ✓ All in one
- ✓ 100~215kWh High-capacity
- ✓ Intelligent Integration

[5G, human exposure to electromagnetic fields \(EMF\) ...](#)

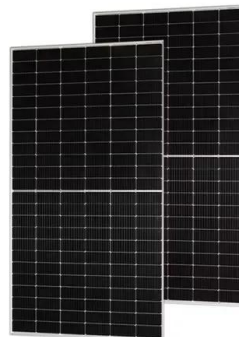
There is no evidence that electromagnetic fields from existing (2G, 3G and 4G) mobile networks pose any health risks, provided that administrations enforce ...

[Email Contact](#)

[Chapter 5: Communication Flashcards . Quizlet](#)

Study with Quizlet and memorize flashcards containing terms like base station, Where should base stations be located?, What are components of an Emergency ...

[Email Contact](#)



General Order Section 01

Base Station Facility - A MIEMSS designation that authorizes a healthcare facility to provide online medical direction to EMS providers using a Base Station Physician.

[Email Contact](#)





[Three Principles of Designing Base-Station Antennas](#)

This paper proposes a new design of a triple-band dual-polarized indoor base station antenna for mobile communication systems serving the ...

[Email Contact](#)



Base stations and networks

The intensity of the radio waves is drastically reduced as the distance increases from the base station antenna. On the ground, in houses, and other places where people reside, the ...

[Email Contact](#)

[Transportable base station for emergency communications](#)

ASTRI has succeeded in producing a mobile base station that allows for cost-efficient, low-latency, and stable mission-critical mobile broadband communications for emergency services.

[Email Contact](#)



[Mobile Phone Base Stations EMF / Health Fact Pack](#)

The higher data rate services provided by 3G also requires more base stations and the coverage area decreases as the traffic increases. Many 3G base stations will be able to share with ...

[Email Contact](#)



5G, human exposure to electromagnetic fields (EMF) and health

Together with the introduction of mobile communication technologies, there has been some public concern about the potential health risks associated with the use of mobile phones and living ...

[Email Contact](#)



EMT-B Chapter 4

Study with Quizlet and memorize flashcards containing terms like "hot line", A trusting relationship built with your patient, Communication through an interconnected series of repeater stations ...

[Email Contact](#)



EMF

A base station is made up of antennas connected by cable to electronic (radio) equipment usually housed in a room or 'shelter'. Some base stations have radio communications dishes (shaped ...

[Email Contact](#)



Movable Base Stations in Mobile Networks for Emergency ...

In this work, we present a quantitative network performance comparison between a fixed base station and a movable base station, when a group of first responders is moving in a ...

[Email Contact](#)





radio access network explained

To meet the growing demand for data, operators are deploying more base stations in densely populated areas, leading to better coverage and capacity. The Radio Access ...

[Email Contact](#)



Contact Us

For catalog requests, pricing, or partnerships, please visit:
<https://www.ogrzewanie-jelenia.pl>