

# **Photovoltaic communication if base station is disconnected**





## Overview

---

Do solar panels need to be disconnected?

Most solar panel installations are not disconnected once configured. There is no harm in unplugging the panels or turning it off, but it has few benefits. The purpose of a solar panel is provide energy to power appliances and devices. If you disconnect the modules, you have to wait for the panels to collect and convert energy before it can be used.

How does a solar panel integrate with a photovoltaic system?

The integration of a solar panel into a photovoltaic system is essential for using the produced electricity. A complete PV system consists of inverters, batteries, charge controllers, and electrical cables, allowing the harvested solar energy to power devices.

What should I do if my solar panel system is disconnected?

If you are considering disconnecting your solar panel system, seek guidance from a qualified solar installer or electrician. Additionally, install backup power solutions to ensure an interrupted power supply when your solar panels are disconnected and not generating electricity. This could include backup generators or UPS systems.

What happens if a solar panel is not connected to an inverter?

If a solar panel is not connected to an inverter, the produced DC (direct current) power from the solar panels cannot be converted into AC (alternating current) power. However, the detailed consequences of not connecting an inverter are given below: a. Incompatible with Electrical Devices.

What happens if a solar panel does not have a load connection?

Without a load connection, no electric current will flow across the circuit. Although the panel will still receive abundant sunlight, the produced electric energy will not be used effectively. b. Conversion to Heat Energy.



What happens if a solar panel does not have a charge controller?

If the solar panel system includes batteries, without a charge controller, the batteries are more likely to get overcharged. So, if your energy system does not have a charge controller, excessive voltage or current from the panels can damage the batteries. This could shorten their lifespan, or even cause them to fail. b.



## Photovoltaic communication if base station is disconnected

---



### ECOVACS US

Place the treasure in the base-in-app, wait for about 10 seconds until the treasure is in the charging state (the AUTO key light will flash), and the station and the treasure will be ...

[Email Contact](#)

### [What Happens if a Solar Panel is Not Connected to Anything?](#)

When sunlight strikes a solar cell, an electron gets released. The electron flows down the cables and turns on a TV, microwave or whatever you loaded onto the system. If there is no wiring for ...

[Email Contact](#)



### [How Solar Energy Systems are Revolutionizing Communication ...](#)

Various policies that governments have adopted, such as auctions, feed-in tariffs, net metering, and contracts for difference, promote solar adoption, which encourages the use ...

[Email Contact](#)



### [Outdoor rescue equipment and communication base stations.#Photovoltaic](#)

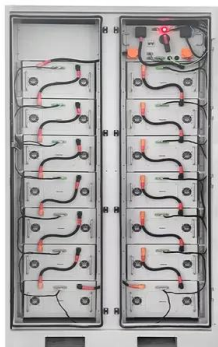
About Press Copyright Contact us Creators  
Advertise Developers Terms Privacy Policy &  
Safety How works Test new features NFL Sunday  
Ticket © 2025 Google LLC



[Email Contact](#)



To Strive forward No Energy Waste



- ✓ All in one
- ✓ 100~215kWh High-capacity
- ✓ Intelligent Integration

[Location of photovoltaic disconnecting means.. Information by](#)

Your AHJ may or may not be totally clear on this stuff, and might want to require you to have a disconnect where the conductors in question enter the building. But if it were ...

[Email Contact](#)

[Site Energy Revolution: How Solar Energy Systems Reshape Communication](#)

Discover how solar energy is reshaping communication base stations by reducing energy costs, improving reliability, and boosting sustainability. Explore Huijue's solar solutions ...

[Email Contact](#)



[Ipandee Green Solar Oil-to-photovoltaic conversion...](#)

In the future, Ipandee will continue to introduce more green design concepts and advanced technologies in the field of green communication base stations. ...

[Email Contact](#)





### [The FusionSolar Plant Status is Abnormal](#)

Plant offline: Generally, the communication device is disconnected from the management system. You need to check whether the local network environment is normal.

[Email Contact](#)



### [What Happens if a Solar Panel is Not Connected?](#)

Now, to understand if it is ok to leave a solar panel disconnected, let's discuss the effects of unconnected solar panels and the potential risks associated with their disconnection.

[Email Contact](#)

### [The photovoltaic inverter is not connected to the base station](#)

Grid-linked photovoltaic (PV) plant is a solar power system that is connected to the electrical grid 39,40. It consists of solar panels, an inverter, and a connection to the utility photovoltaic ...

[Email Contact](#)



### [The photovoltaic inverter is not connected to the base station](#)

The widespread installation of 5G base stations has caused a notable surge in energy consumption, and a situation that conflicts with the aim of attaining carbon neutrality.

[Email Contact](#)



### [What Happens If PV Modules Are Not Connected?](#)

But what happens if PV modules, or solar panels, are disconnected when not in use? Disconnection stops energy production, which means missing out on ...

[Email Contact](#)



### [Solar Powered Cellular Base Stations: Current ...](#)

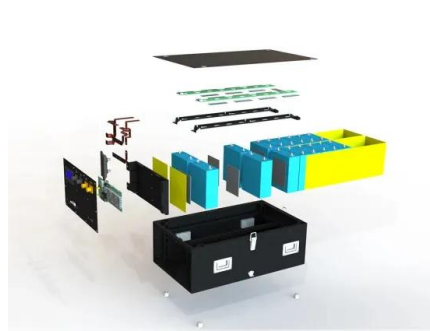
Cellular base stations powered by renewable energy sources such as solar power have emerged as one of the promising solutions to these issues.

[Email Contact](#)

### [Multi-objective interval planning for 5G base station virtual power](#)

Large-scale deployment of 5G base stations has brought severe challenges to the economic operation of the distribution network, furthermore, as a new type of adjustable load, ...

[Email Contact](#)



### [Base Station repeatedly disconnecting and ...](#)

Base Station repeatedly disconnecting and reconnecting from WiFi If you are subscribed to monitoring service, and if your Base Station is ...

[Email Contact](#)





### What Happens if a Solar Panel is Not Connected?

Now, to understand if it is ok to leave a solar panel disconnected, let's discuss the effects of unconnected solar panels and the potential risks

...

[Email Contact](#)



### Telecommunication base station system working principle and ...

The ESB-series outdoor base station system utilizes solar energy and diesel engines to achieve uninterrupted off grid power supply. Solar power generation is the use of ...

[Email Contact](#)

### **Energy Management Strategy for Distributed Photovoltaic 5G Base Station**

Therefore, aiming to optimize the energy utilization efficiency of 5G base stations, a novel distributed photovoltaic 5G base station DC microgrid structure and an energy ...

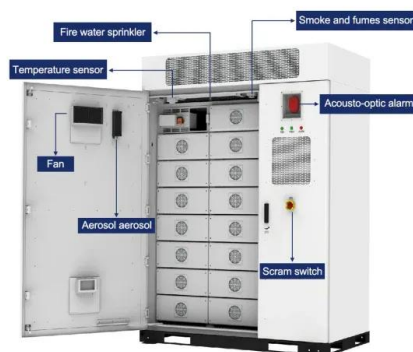
[Email Contact](#)



### What if the solar panel is disconnected? .. NenPower

When a solar panel is disconnected, whether accidentally or intentionally, several crucial aspects require consideration. This disconnection could be part of scheduled ...

[Email Contact](#)



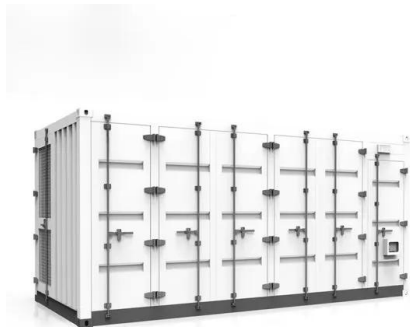




### What Happens if a Solar Panel is Not Connected to Anything?

Your AHJ may or may not be totally clear on this stuff, and might want to require you to have a disconnect where the conductors in question enter the building. But if it were ...

[Email Contact](#)



### **How Solar Energy Systems are Revolutionizing Communication Base Stations?**

Various policies that governments have adopted, such as auctions, feed-in tariffs, net metering, and contracts for difference, promote solar adoption, which encourages the use ...

[Email Contact](#)

### **CN106602541A**

The invention relates to a wind-photovoltaic-diesel-battery independent power supply coordinated control system for communication base stations. The system comprises a wind-driven ...

[Email Contact](#)



### Photovoltaic Energy Storage for Communication Base Stations A

Summary: This article explores how integrating photovoltaic (PV) systems with energy storage can revolutionize power supply for communication base stations. Learn about cost savings, ...

[Email Contact](#)



### [How to choose commercial photovoltaic power station communication?](#)

An appropriate communication solution often determines the convenience and response speed of post-construction operation and maintenance for photovoltaic power plants. ...

[Email Contact](#)



### [What Happens If PV Modules Are Not Connected? Let's Find Out](#)

But what happens if PV modules, or solar panels, are disconnected when not in use? Disconnection stops energy production, which means missing out on generating electricity that ...

[Email Contact](#)

## Contact Us

---

For catalog requests, pricing, or partnerships, please visit:  
<https://www.ogrzewanie-jelenia.pl>