

Power consumption of the Netherlands integrated 5G base station





Overview

To understand this, we need to look closer at the base station power consumption characteristics (Figure 3). The model shows that there is significant energy consumption in the base station.

Do 5G base stations consume a lot of energy?

The energy consumption of the fifth generation (5G) of mobile networks is one of the major concerns of the telecom industry. However, there is not currently an accurate and tractable approach to evaluate 5G base stations' (BSs') power consumption.

Should power consumption models be used in 5G networks?

This restricts the potential use of the power models, as their validity and accuracy remain unclear. Future work includes the further development of the power consumption models to form a unified evaluation framework that enables the quantification and optimization of energy consumption and energy efficiency of 5G networks.

Does a balanced dataset improve energy prediction of 5G base stations?

For energy prediction of 5G base stations, this thesis finds that using a more balanced dataset, in terms of the number of samples for each product, has a positive impact for the ANN and the Gradient Boosted Trees model while the linear regression performs worse.

Is 5G base station power consumption accurate?

esan@huawei.com Abstract—The energy consumption of the fifth generation (5G) of mobile networks is one of the major concerns of the telecom industry. However, there is not currently an accurate and tractable approach to evaluate 5G base stations (BSs) power consumption. In this article, we pr.

Can machine learning predict energy consumption for 5g/4g radio base stations?

To further develop energy modelling methodology and attempt to answer the



questions presented in the previous section, different machine learning algorithm's ability to predict energy consumption is investigated for 5G/4G radio base stations.

Can a power consumption model drive the optimisation of greener 5G?

curacy of our proposed model indicates that it may be a more viable tool to drive the optimisation of greener 5G (and beyond) network s.VI.

CONCLUSIONSIn this paper, we presented a novel power consumption model for realistic 5G AAUs, which builds on



Power consumption of the Netherlands integrated 5G base station



[Power Consumption Modeling of 5G Multi-Carrier Base Stations: ...](#)

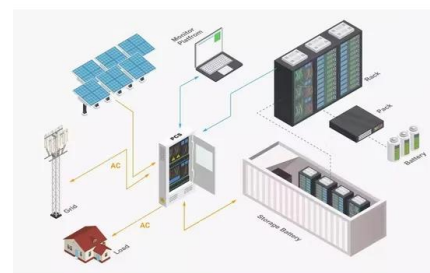
However, there is still a need to understand the power consumption behavior of state-of-the-art base station architectures, such as multi-carrier active antenna units (AAUs), as ...

[Email Contact](#)

[Machine Learning and Analytical Power Consumption Models for ...](#)

In this article, we propose a novel model for a realistic characterization of the power consumption of 5G multi-carrier BSs, which builds on a large data collection campaign.

[Email Contact](#)



[Small Cells, Big Impact: Designing Power Solutions for 5G ...](#)

Small cells are smaller and cheaper than a cell tower and can be installed in a variety of areas, bringing more base stations closer to users. A large number of base stations increases the ...

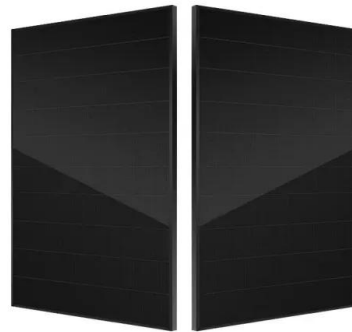
[Email Contact](#)

[What is the Power Consumption of a 5G Base Station?](#)

These 5G base stations consume about three times the power of the 4G stations. The main reason for this spike in power consumption is the addition of massive MIMO and ...



[Email Contact](#)



[Final draft of deliverable D.WG3-02-Smart Energy Saving of ...](#)

Smart Energy Saving of 5G Base Station: Based on AI and other emerging technologies to forecast and optimize the management of 5G wireless network energy consumption

[Email Contact](#)



[Comparison of Power Consumption Models for 5G Cellular ...](#)

A new power model structure is proposed in order to assess the power consumption of traditional base stations, their extensions, and alternative architectures such as large-scale ...

[Email Contact](#)



[5G base stations and the challenge of thermal ...](#)

Phase change 5G materials enhance the transfer of heat to heat sinks, which allows the component to run at a lower temperature, minimizing ...

[Email Contact](#)





[Modelling the 5G Energy Consumption using Real-world ...](#)

This paper proposes a novel 5G base stations energy consumption modelling method by learning from a real-world dataset used in the ITU 5G Base Station Energy Consumption Modelling ...

[Email Contact](#)



[Modelling the 5G Energy Consumption using Real-world Data: ...](#)

To improve the energy efficiency of 5G networks, it is imperative to develop sophisticated models that accurately reflect the influence of base station (BS) attributes and operational conditions ...

[Email Contact](#)



[Comparison of Power Consumption Models for 5G Cellular Network Base ...](#)

Power consumption models for base stations are briefly discussed as part of the development of a model for life cycle assessment. An overview of relevant base station power ...

[Email Contact](#)



[Machine Learning and Analytical Power Consumption ...](#)

When symbol shutdown is activated, the AAU switches off the MCPAs, and its power consumption is reduced to the sum of the baseline power consumption, P_0 , the baseband ...

[Email Contact](#)





5G Energy Efficiency Overview

Figure 2 illustrate the trend of energy consumptions. 5G macro base stations may require several new, power-hungry components, including microwave or millimeter-wave transceivers, field ...

[Email Contact](#)



[Final draft of deliverable D.WG3-02-Smart Energy Saving of ...](#)

Change Log This document contains Version 1.0 of the ITU-T Technical Report on "Smart Energy Saving of 5G Base Station: Based on AI and other emerging technologies to forecast and ...

[Email Contact](#)

[Comparison of Power Consumption Models for 5G Cellular Network Base](#)

A new power model structure is proposed in order to assess the power consumption of traditional base stations, their extensions, and alternative architectures such as large-scale ...

[Email Contact](#)



Unity(TM) Outdoor Integrated Base Station 2W_Unity(TM) 5G Outdoor Integrated

SageRAN Unity(TM) 5G Integrated Base Station leverages the NXP LX2160A platform, featuring low power consumption, easy customization, and high integration capabilities. It is ideal for ...

[Email Contact](#)

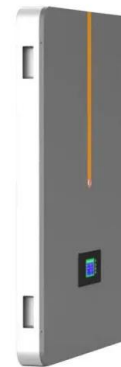




Aggregated regulation and coordinated scheduling of PV-storage

Photovoltaic (PV)-storage integrated 5G base station (BS) can participate in demand response on a large scale, conduct electricity transaction and provide auxiliary ...

[Email Contact](#)



Improved Model of Base Station Power System for the ...

The widespread installation of 5G base stations has caused a notable surge in energy consumption, and a situation that conflicts with the ...

[Email Contact](#)



Strategy of 5G Base Station Energy Storage Participating in the Power

The proportion of traditional frequency regulation units decreases as renewable energy increases, posing new challenges to the frequency stability of the power system. The ...

[Email Contact](#)



A technical look at 5G energy consumption and performance

To understand this, we need to look closer at the base station power consumption characteristics (Figure 3). The model shows that there is significant energy consumption in the ...

[Email Contact](#)





[5G Base Stations: The Energy Consumption Challenge](#)

Although the energy consumption of 5G base stations is higher than any previous generations, technology and strategy innovations mentioned above would help MNOs stabilize or even ...

[Email Contact](#)



[Comparison of Power Consumption Models for 5G Cellular ...](#)

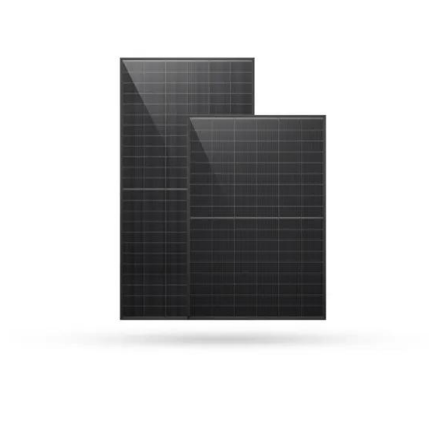
Power consumption models for base stations are briefly discussed as part of the development of a model for life cycle assessment. An overview of relevant base station power ...

[Email Contact](#)

[Multi-objective interval planning for 5G base station virtual power](#)

Large-scale deployment of 5G base stations has brought severe challenges to the economic operation of the distribution network, furthermore, as a new type of adjustable load, ...

[Email Contact](#)



[Energy Consumption Modelling for 5G Radio Base Stations ...](#)

In this thesis linear regression is compared with the gradient boosted trees method and a neural network to see how well they are able to predict energy consumption from field data of 5G ...

[Email Contact](#)



[Machine Learning and Analytical Power Consumption Models for 5G Base](#)

In this article, we propose a novel model for a realistic characterization of the power consumption of 5G multi-carrier BSs, which builds on a large data collection campaign.

[Email Contact](#)



[The power supply design considerations for 5G base ...](#)

An integrated architecture reduces power consumption, which MTN Consulting estimates currently is about 5% to 6 % of opex. This percentage ...

[Email Contact](#)

[Hierarchical regulation strategy based on dynamic clustering for](#)

The accuracy of regulation and utilization of the regulable potential are ensured by the dynamic clustering. Abstract Utilizing the backup energy storage potential of 5G base ...

[Email Contact](#)



Contact Us

For catalog requests, pricing, or partnerships, please visit:
<https://www.ogrzewanie-jelenia.pl>