

Singapore double-glass photovoltaic modules





Overview

What is a double glass (Dual Glass) solar panel?

A double glass (Dual Glass) solar panel is a glass-glass module structure where a glass layer is used on the back of the modules instead of the traditional polymer backsheet. Double glass solar panels were originally heavy and expensive, but the lighter polymer backing panels gained most of the market share.

Are frameless double-glass PV modules a good choice?

Although the initial module efficiency is slightly lower (due to the extra optical loss), the lifetime electricity generation of frameless double-glass PV modules is considerably higher due to their excellent reliability (i.e. a longer life expectancy and lower annual degradation rate).

What is a glass-embedded photovoltaic system?

As the photovoltaic cells are integrated with the glass, it negates the need to have separate conventional solar panels installed on the rooftop. SunEwat is AGC's glass-embedded photovoltaic solution, offering architects an efficient and aesthetically pleasing solution for energy-generating glass facades.

What is glass integrated photovoltaic (gipv)?

It is a Glass Integrated Photovoltaic (GIPV) product comprising of laminated safety glass with embedded solar cells. It is manufactured with heat-strengthened glass on both front and back surfaces. The shape and size of each module can be customized to match creative architectural designs.

What are the benefits of double glazed solar panels?

Double-glazed solar panels, also known as dual glass solar panels, offer increased reliability, especially for large-scale photovoltaic projects. They provide better resistance to higher temperatures, humidity, and UV conditions and have better mechanical stability, which reduces the risk of microcracks



during installation and operation.

Is Photovoltaic Glass still used?

The use of photovoltaic glass still remains in the domain of commercial use due to its high cost of installation and upkeep but if cheaper materials were to be used, regular people could have a bigger share of this planet saving invention. Looking for Photovoltaic (PV) Glass Solutions in Singapore?

Tap into the vast power of unlimited solar energy.



Singapore double-glass photovoltaic modules



[What advantages does double glass solar photovoltaic panels ...](#)

Compared with traditional monocrystalline silicon photovoltaic modules, double-glass double-sided modules have the advantages of a long life cycle, low attenuation rate, weather ...

[Email Contact](#)

[Glass-Glass Solar Panel Technology](#)

Double Glass is especially important in photovoltaic facilities such as solar power plants and with the expected long service life of modules such as AKCOME, ...

[Email Contact](#)



[What is the Double Glass \(Dual Glass\) Photovoltaic Solar Panel?](#)

Glass-glass module structures (Dual Glass or Double Glass) is a technology that uses a glass layer on the back of the modules instead of the traditional polymer backsheet.

[Email Contact](#)



[What is the Double Glass \(Dual Glass\) Photovoltaic ...](#)

Glass-glass module structures (Dual Glass or Double Glass) is a technology that uses a glass layer on the back of the modules instead of the ...

...



[Email Contact](#)



[Sembcorp Tengeh Floating Solar Farm](#)

Every component of the system was carefully designed and selected based on Singapore's climate conditions. These include double-glass PV modules instead of the single-glass variant ...

[Email Contact](#)



[What is the Double Glass Photovoltaic Solar Panel?](#)

Glass-glass module structures (Dual Glass or Double Glass) is a technology that uses a glass layer on the back of the modules instead of the traditional ...

[Email Contact](#)



[High performance double-glass bifacial PV modules through...](#)

Significant amount of near infrared light passes through bifacial cells. Double-glass structure shows a loss of ~ 1.30% compare to the glass/backsheet structure under STC measurements.

[Email Contact](#)



[Singapore Double Glass Solar Panels Market Key Highlights](#)

Key growth factors, obstacles, and new possibilities are highlighted in the Singapore Double Glass Solar Panels Market's Regional Trends and Forecasts, which offer a ...

[Email Contact](#)



Energy Generating Glass (BIPV)

Covering a total floor area of 1,435 square metres, the front part of the two-storey building uses AGC glass materials that combine the use of high-heat insulating effects and photovoltaic ...

[Email Contact](#)



[NSR , National Solar Repository of Singapore](#)

SunEwat Building Integrated Photovoltaic (BIPV) Solution empowers glass applications. It is a Glass Integrated Photovoltaic (GIPV) product comprising of ...

[Email Contact](#)



[A comparative life-cycle assessment of photovoltaic electricity](#)

Although the initial module efficiency is slightly lower (due to the extra optical loss), the lifetime electricity generation of frameless double-glass PV modules is considerably higher ...

[Email Contact](#)



[Photovoltaic Glass Singapore , High Quality Pv Glass Panel](#)

Looking for Photovoltaic (PV) Glass Solutions in Singapore? Tap into the vast power of unlimited solar energy. For more information, call us at (65) 9068 6289.

[Email Contact](#)



[Flexible vs. Rigid Double-Glass Solar Panels: Which One is Your ...](#)

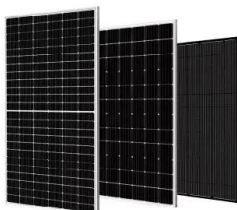
Compare flexible and rigid double-glass solar panels in terms of features, performance, and applications to find the best solution for your needs.

[Email Contact](#)

[What are the advantages of dual-glass Dualsun modules?](#)

Two types of photovoltaic module structures coexist: Glass-polymer film (also called glass-backsheet) type modules. They are made of glass on the front side and polymer film on the ...

[Email Contact](#)



[INSTRUCTIONS FOR PREPARATION OF PAPERS](#)

ABSTRACT: Double-glass modules provide a heavy-duty solution for harsh environments with high temperature, high humidity or high UV conditions that usually impact the reliability of ...

[Email Contact](#)



[The Difference Between Double-glass and Single ...](#)

The main difference between double-glass photovoltaic modules and single-sided glass solar panels lies in their construction and design, which ...

[Email Contact](#)



[Singapore's 60 MW floating PV array up and running](#)

The Public Utilities Board said in an earlier statement that it was seeking double-glass PV modules like those supplied by Trina Solar, because ...

[Email Contact](#)

Bi-facial Double Glass

Among our product portfolio is the High-Power Density low-glare module (GMD series), 3-in-1 Building-Integrated solar roof materials (BiPV series), Bi-Facial double glass Fire Test Class A ...

[Email Contact](#)



[Bifacial Double-Glass PV Module](#)

Using 144 half-cut high-efficiency mono-Si solar cells from research collaboration partner REC, SERIS' PV Module Development Lab fabricates a bifacial double-glass PV module prototype ...

[Email Contact](#)

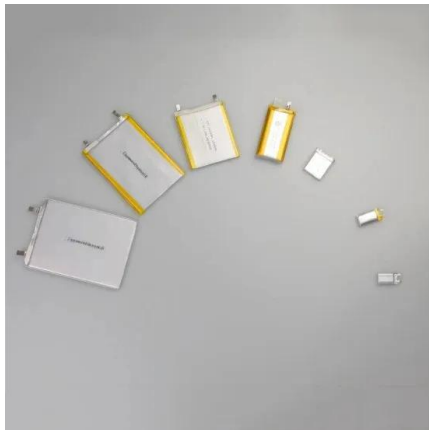




[Photovoltaic Glass Singapore , High Quality Pv Glass ...](#)

Looking for Photovoltaic (PV) Glass Solutions in Singapore? Tap into the vast power of unlimited solar energy. For more information, call us at (65) 9068 6289.

[Email Contact](#)



Energy Generating Glass (BIPV)

Covering a total floor area of 1,435 square metres, the front part of the two-storey building uses AGC glass materials that combine the use of high-heat ...

[Email Contact](#)

[AGC Building-Integrated Photovoltaics \(BIPV\) Vision Square](#)

Utilizing AGC's coated glass technology, SunEwat BIPV is now available with Low-E coating and can be laminated or double glazed, offering energy-efficient glass modules that can harvest ...

[Email Contact](#)



[What is photovoltaic double glass panel technology](#)

What is photovoltaic double glass panel technology Glass-glass module structures (Glass Glass or Double Glass) is a technology that uses a glass layer on the back of the modules instead of ...

[Email Contact](#)





[A comparative life-cycle assessment of photovoltaic electricity](#)

Finally, our study also demonstrates that long-term PV module reliability has great impacts on the environmental performance of PV technologies. The environmental benefits (in terms of EPBT ...

[Email Contact](#)



Contact Us

For catalog requests, pricing, or partnerships, please visit:
<https://www.ogrzewanie-jelenia.pl>