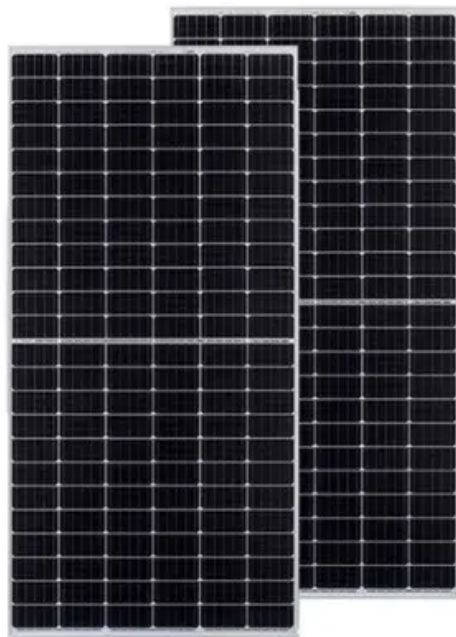


Solar PV panel size





Overview

How big are solar panels?

This is the typical classification of solar panel sizes (based on the solar cell size). It's a bit theoretical and quite useless for most calculations. The only useful thing that we get from this is depth or height (panel thickness): Most solar panels are about 1.5 inches thick.

How many Watts Does a solar panel have?

Residential solar panels typically possess between 250W to 450W depending on how efficient they are in converting sunlight into energy and the solar panel sizes. Solar panels are available in a wide range of sizes, types, and total wattage. The standard solar panel size measures an average of 5.4 by 3.25 feet or 65 by 39 inches.

What are the dimensions of portable solar panels?

Note: Portable solar panels may have flexible designs with different dimensions. Physical Size: 165-200 cm long, 99-102 cm wide (typical range) Best Applications: Note: Dimensions vary by manufacturer. Consult specific product specifications for exact measurements. Physical Size: 200-213 cm long, 99-109 cm wide (typical range) Best Applications:.

How big is A 72-cell solar panel?

The average 72-cell solar panel size measures 3.25 feet by 6.42 feet and is laid out as a 6 x 12 grid, making them almost a foot taller than the 60-cell standard size panels. Given their large physical size, 72-cell solar panels may be awkward to carry, which is why two people are often required for installation.

What is the standard size of a solar PV cell?

Depending on manufacturer and type, these dimensions are usually available in millimetres which can be easily converted to centimetres or meters. For



example, a standard PV cell's dimensions in length and breadth are 156 mm respectively = $156/10 = 15.6$ cm. Thus, the standard size of a solar PV cell is approximately 15.6 cm by 15.6 cm.

How much does a commercial solar panel weigh?

These panels cover an area of 17.62 square feet and weigh around 40 pounds, excluding the weight of frames and mounting equipment. On the other hand, commercial solar panels typically feature 72 cells, with dimensions of approximately 3.25 feet by 6.5 feet. These panels cover an area of 21.13 square feet and weigh about 50 pounds.



Solar PV panel size



[Solar Panel Dimensions: What You Need to Know ...](#)

Discover the ideal solar panel sizes for your installation. Learn about common dimensions, types of panels, and space requirements for ...

[Email Contact](#)

[Solar Panel Sizes: Choosing the Right Dimensions for Any Project](#)

Our guide helps you pick the perfect solar panel size for any project: residential, commercial, or industrial. No more guesswork, just maximum savings.

[Email Contact](#)



[Solar Panel Sizes and Wattage Explained](#)

Their tool estimates the size and cost of a PV system based on your home energy needs. Enter your yearly kWh usage, solar hours per day, and the percentage of your ...

[Email Contact](#)

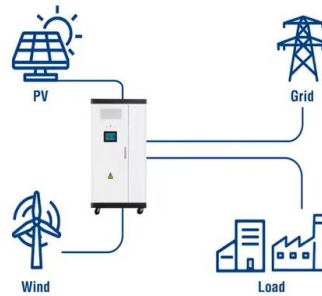
[Solar panel size: choosing the right dimensions](#)

Solar panel size affects energy production and installation space. Explore standard sizes and find the perfect fit for your solar project.

[Email Contact](#)



Utility-Scale ESS solutions



[Solar Panel Sizes \(Energy Use & Dimensions Guide\)](#)

Solar panels are available in a wide range of sizes, types, and total wattage. The standard solar panel size measures an average of 5.4 by 3.25 ...

[Email Contact](#)

[Standard Solar Panel Sizes And Wattages \(100W-500W ...](#)

To bridge that gap of very useful knowledge needed, we have compared and averaged the sizes of 100-watt to 500-watt solar panels available on the market. The goal here is to get to the ...

[Email Contact](#)



[Solar panel sizes and dimensions explained . FMB](#)

Solar panel size captures both a panel's power and its physical dimensions. Find out what size of solar panel system you need with our guide.

[Email Contact](#)

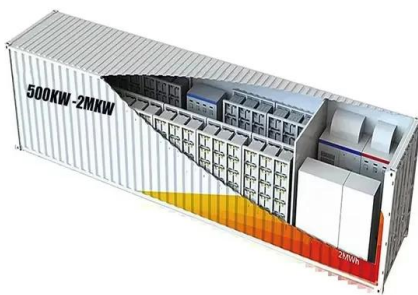




[Solar Panel Size and Weight Explained: How Big Are ...](#)

What is the best size of solar panels? The best-sized solar panel is one that fits your home's needs. Most of the time, a 60 to 72-cell solar panel is ...

[Email Contact](#)



[Solar Panel Size And Weight: A Comprehensive Guide](#)

When considering residential solar panels, typical configurations consist of 60 cells measuring approximately 3.25 feet by 5.5 feet. These panels cover an area of 17.62 square ...

[Email Contact](#)

[What Size Are Solar PV Panels? A Guide to Dimensions and Uses](#)

Discover what size solar PV panels are, their impact on energy production, and how to choose the right dimensions for your needs.

[Email Contact](#)



[Guide to solar panel sizes in the UK . Hive Home](#)

Solar panel sizes in the UK If you're thinking about getting solar panels for your home, understanding solar panel sizes and wattage is an important first step. ...

[Email Contact](#)



[What Are the Common Solar Panel Sizes?](#)

Still, most 60-cell solar panels have a size of 39" X 66" and most 72-cell solar panels have sizes of around 39" X 77". However, panels with cell counts of 96, 120, and 144 ...

[Email Contact](#)



[Solar Panels Size & Weight \(Including Commercial Dimensions\)](#)

Individual PV solar cells are thin slices of silicon that typically measure 6 inches long by 6 inches wide. Multiple solar cells are assembled together to form a rectangular ...

[Email Contact](#)

[Solar panel size and weight: everything you need to ...](#)

Learn everything about solar system size, solar panel dimensions, and how much solar panels weigh in this complete guide for residential ...

[Email Contact](#)



[Solar Panels Size & Weight \(Including Commercial...](#)

Individual PV solar cells are thin slices of silicon that typically measure 6 inches long by 6 inches wide. Multiple solar cells are assembled ...

[Email Contact](#)



[Solar Panel Sizes: Choosing the Right Dimensions for ...](#)

Our guide helps you pick the perfect solar panel size for any project: residential, commercial, or industrial. No more guesswork, just ...

[Email Contact](#)



[Solar Panel Dimensions and Sizes: Complete Guide](#)

There are three main sizes of solar panels to know: 60-cell, 72-cell, and 96-cell. For commercial and residential solar panels, the 60-cell and 72-cell solar ...

[Email Contact](#)

[The best solar panel size guide every homeowner needs](#)

Learn how to choose the ideal solar panel size for your home with charts, standard dimensions, and tips to calculate size per kW in this complete ...

[Email Contact](#)



[Solar Photovoltaic Sizing Calculator Online](#)

The Solar Photovoltaic Sizing Calculator is a valuable resource that assists in determining the required PV system capacity based on specific ...

[Email Contact](#)





[Discover the Best Solar Panel Size for Your Needs--Easy Guide](#)

Ready to pick the right solar panel size? Read our guide for tips on choosing the perfect fit, understanding different sizes, and boosting energy efficiency!

[Email Contact](#)



[Solar panel size and weight: everything you need to know](#)

Learn everything about solar system size, solar panel dimensions, and how much solar panels weigh in this complete guide for residential photovoltaic installations.

[Email Contact](#)

[Solar Panel Size And Weight: A Comprehensive Guide](#)

Their tool estimates the size and cost of a PV system based on your home energy needs. Enter your yearly kWh usage, solar hours per day, ...

[Email Contact](#)



[Standard Solar Panel Sizes And Wattages \(100W ...](#)

To bridge that gap of very useful knowledge needed, we have compared and averaged the sizes of 100-watt to 500-watt solar panels available on the ...

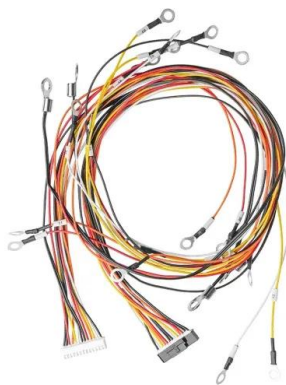
[Email Contact](#)



[Solar Panel Sizes \(Energy Use & Dimensions Guide\)](#)

Solar panels are available in a wide range of sizes, types, and total wattage. The standard solar panel size measures an average of 5.4 by 3.25 feet or 65 by 39 inches. This ...

[Email Contact](#)



[Solar Panel Sizes, Dimensions & Weight , Solar Choice](#)

Standard residential solar panels contain 60 solar cells (or 120 half-cut solar cells) and typically generate anywhere from 350W to 500W of electricity. The size of these panels ...

[Email Contact](#)

[Solar Panel Dimensions Sizes and Wattage](#)

The size of solar panels is an essential criterion to consider when planning a photovoltaic solar installation. By choosing the right panel size, you ...

[Email Contact](#)



[Solar Panel Dimensions and Sizes: Complete Guide](#)

There are three main sizes of solar panels to know: 60-cell, 72-cell, and 96-cell. For commercial and residential solar panels, the 60-cell and 72-cell solar panels size are most commonly used ...

[Email Contact](#)



Contact Us

For catalog requests, pricing, or partnerships, please visit:
<https://www.ogrzewanie-jelenia.pl>