

The voltage of one group of lithium iron phosphate battery pack is too low





Overview

The best way to check the remaining battery capacity of a LiFePO₄ battery is to use a battery monitor. A battery monitor is a device that calculates the remaining capacity of the battery using a shunt. The shunt i.

What is lithium iron phosphate (LiFePO₄) battery?

Lithium Iron Phosphate (LiFePO₄) batteries are renowned for their stability, safety, and long cycle life. Understanding the voltage characteristics of these batteries is essential for maximizing their performance and longevity.

What is the low voltage cutoff for LiFePO₄ batteries?

The low voltage cutoff for LiFePO₄ batteries is the predetermined voltage threshold below which the battery should not discharge. Typically, for LiFePO₄ batteries, this cutoff is around 2.5V per cell. 3. What voltage should LiFePO₄ bulk absorb?

The recommended bulk/absorb voltage for LiFePO₄ batteries typically ranges between 14.2 and 14.6 volts.

What is the nominal voltage of a LiFePO₄ battery?

The nominal voltage of a LiFePO₄ cell is 3.2V. These cells are considered fully discharged at 2.5V and fully charged at 3.65V. Note that these values may vary based on the specific cell specifications. What is the minimum voltage that can damage a LiFePO₄ battery?

The minimum voltage threshold for 12V LiFePO₄ batteries is around 10V.

What is a 12 volt LiFePO₄ battery pack?

For example, a 12-volt LiFePO₄ battery pack consists of four individual cells, each with a nominal voltage of 3.2 volts. Understanding the nominal voltage helps select the appropriate battery pack for your application.

What is the critical voltage threshold for a LiFePO₄ battery?



For 12V LiFePO₄ batteries, the critical voltage threshold is approximately 10V. Falling below this level during discharge can cause irreversible damage to the battery. Consulting the LiFePO₄ battery voltage chart and following recommended charging practices are crucial for preserving battery health. 2.

What makes LiFePO₄ batteries different from other lithium ion chemistries?

LiFePO₄ batteries exhibit a relatively flat voltage profile during charging, leading to stable voltage levels throughout the process. This characteristic sets them apart from other lithium-ion chemistries, which may experience more pronounced voltage fluctuations during charging.



The voltage of one group of lithium iron phosphate battery pack is t



[LiFePO4 cell to cell voltage difference allowable](#)

I just checked the individual cell voltages on my LiFePO4 battery (36v 16Ah). It has 40 cells and is comprised of paralleled groups or 4 cells per group connected in series. The ...

[Email Contact](#)

[Ultimate Guide to LiFePO4 Voltage Chart](#)

The voltage drops in relation to battery capacity are shown in the 12V LiFePO4 battery voltage chart below. Either buy two identical 12V LiFePO4 batteries ...

[Email Contact](#)



[The Comprehensive Guide to LiFePO4 Voltage Chart](#)

In this comprehensive guide, we'll delve into the specifics of LiFePO4 lithium battery voltage, providing you with a clear understanding of how to interpret and utilize a LiFePO4 lithium ...

[Email Contact](#)



[The LiFePO4 \(LFP\) Battery: An Essential Guide](#)

What LiFePO4 Batteries Offer That Other Batteries Don't We keep calling this battery LiFePO4, but what does that mean? LiFePO4 is short for ...

[Email Contact](#)



[LiFePO4 Battery Voltage Chart: Your Ultimate Guide](#)

When a LiFePO4 battery reaches full charge, its voltage typically reaches around 3.6 to 3.7 volts per cell. Remember that exceeding this voltage can lead to overcharging and ...

[Email Contact](#)



[Ultimate Guide to LiFePO4 Voltage Chart](#)

The voltage drops in relation to battery capacity are shown in the 12V LiFePO4 battery voltage chart below. Either buy two identical 12V LiFePO4 batteries and link them in series, or buy a ...

[Email Contact](#)



[LiFePO4 Battery Voltage Chart: Your Ultimate Guide](#)

LiFePO4, which stands for Lithium Iron Phosphate, is a type of lithium-ion battery chemistry known for its stability, high energy density, and ...

[Email Contact](#)





[LFP Battery Health Degrades At Full Charge. Study ...](#)

Lithium iron phosphate (LFP) batteries are cheaper to produce and more stable than traditional nickel-based chemistries. A new study from a Tesla-funded lab ...

[Email Contact](#)



[Understanding LiFePO4 Low Voltage Cutoff for Extended Battery ...](#)

Deep discharge, where a battery's voltage drops significantly below the low voltage cutoff, can lead to irreversible damage. It's crucial to avoid this state to prolong battery life.

[Email Contact](#)

[What is the Lowest Voltage for a Lithium Iron Phosphate Battery?](#)

Therefore, for a standard LiFePO4 battery pack with multiple cells in series, the minimum voltage can vary based on the configuration. For example, a 12V LiFePO4 battery ...

[Email Contact](#)



114KWh ESS



Lithium-ion battery

A lithium-ion battery, or Li-ion battery, is a type of rechargeable battery that uses the reversible intercalation of Li + ions into electronically conducting solids to ...

[Email Contact](#)



[LiFePO4 Rules: 5 Common Causes of Failure and General ...](#)

Lithium Iron Phosphate (LiFePO4) batteries have earned a right as one of the safest, most efficient, and long-lasting batteries for energy storage. These batteries, from renewable energy ...



2MW / 5MWh
Customizable

[Email Contact](#)



[Understanding LiFePO4 Voltage: A Complete Guide ...](#)

Understanding the state of charge (SoC) in relation to voltage is crucial for effective battery management. Below is a detailed voltage chart that ...

[Email Contact](#)

LiFePO4 Battery Voltage Chart

LiFePO4 battery voltage varies depending on charge level, temperature, and load conditions. Understanding its voltage chart is crucial for maintaining efficiency, safety, and ...

[Email Contact](#)



[LiFePO4 VS. Li-ion VS. Li-Po Battery Complete Guide](#)

Overview of Lithium Iron Phosphate, Lithium Ion and Lithium Polymer Batteries Among the many battery options on the market today, three stand out: lithium iron phosphate ...

[Email Contact](#)





[LiFePO4 Battery Voltage Chart: Your Ultimate Guide](#)

When a LiFePO4 battery reaches full charge, its voltage typically reaches around 3.6 to 3.7 volts per cell. Remember that exceeding this ...

[Email Contact](#)



[The Ultimate Guide to LiFePO4 Lithium Battery ...](#)

Renowned for their stability, safety, and extended cycle life, LiFePO4 batteries typically have a nominal cell voltage of 3.2 volts. In comparison, conventional ...

[Email Contact](#)



[Optimal Lithium Battery Charging: A Definitive Guide](#)

Unlock the secrets of charging lithium battery packs correctly for optimal performance and longevity. Expert tips and techniques revealed in our ...

[Email Contact](#)



BYD Battery-Box

One Battery-Box Premium LVS is a lithium iron phosphate (LFP) battery pack for use with an external inverter. A Battery-Box Premium LVS contains between 1 to 6 battery modules LVS ...

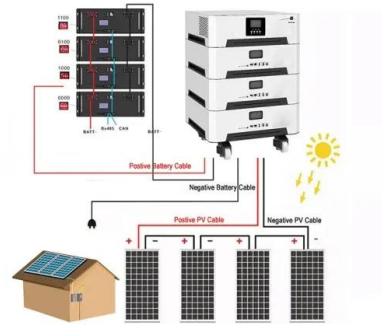
[Email Contact](#)



[The Definitive Guide to LiFePO4 Lithium Battery ...](#)

LiFePO4 batteries typically have a nominal cell voltage of 3.2 volts. This is in contrast to conventional lithium-ion batteries, which generally ...

[Email Contact](#)



[The Ultimate Guide to LiFePO4 Lithium Battery ...](#)

Part 2. LiFePO4 Voltage Chart The LiFePO4 Voltage Chart is an essential tool for monitoring the charge levels and overall health of Lithium Iron Phosphate ...

[Email Contact](#)



[Understanding LiFePO4 Low Voltage Cutoff for ...](#)

Deep discharge, where a battery's voltage drops significantly below the low voltage cutoff, can lead to irreversible damage. It's crucial to avoid this ...

[Email Contact](#)



[LiFePO4 Battery Life: How Long Can You Really ...](#)

LiFePO4 battery life is a key factor that affects both performance and reliability. As a popular choice for trolling motors, golf carts, RVs, and solar energy ...

[Email Contact](#)

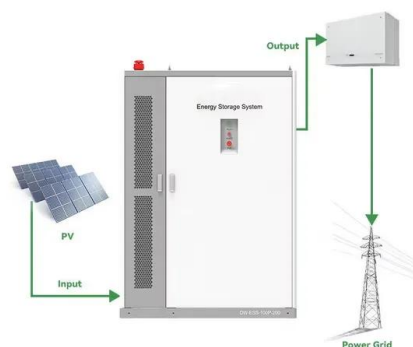




[Understanding LiFePO4 Battery the Chemistry and Applications](#)

What is a LiFePO4 Battery pack? A LiFePO4 battery, short for Lithium Iron Phosphate battery, is a rechargeable battery that utilizes a specific chemistry to provide high ...

[Email Contact](#)



[Understanding LiFePO4 Voltage: A Complete Guide and Chart](#)

Understanding the state of charge (SoC) in relation to voltage is crucial for effective battery management. Below is a detailed voltage chart that illustrates the relationship between ...

[Email Contact](#)

[LiFePO4 Voltage Charts \(1 Cell, 12V, 24V, 48V\)](#)

Explore the LiFePO4 voltage chart to understand the state of charge for 1 cell, 12V, 24V, and 48V batteries, as well as 3.2V LiFePO4 cells.

[Email Contact](#)



[The Ultimate Guide to LiFePO4 Lithium Battery Voltage Charts](#)

Renowned for their stability, safety, and extended cycle life, LiFePO4 batteries typically have a nominal cell voltage of 3.2 volts. In comparison, conventional lithium-ion batteries generally ...

[Email Contact](#)



[How to discharge and charging lithium iron phosphate ...](#)

Choosing a charger specifically designed for lithium iron phosphate batteries is crucial. The charging algorithm required for lifepo4 ...

[Email Contact](#)



12V 10AH



[The Definitive Guide to LiFePO4 Lithium Battery Voltage Charts](#)

LiFePO4 batteries typically have a nominal cell voltage of 3.2 volts. This is in contrast to conventional lithium-ion batteries, which generally have a nominal voltage of 3.6 to ...

[Email Contact](#)

Contact Us

For catalog requests, pricing, or partnerships, please visit:
<https://www.ogrzewanie-jelenia.pl>