

# Thickness of double-sided double-glass modules



**European  
Warehouse**



**7-15 days**  
Delivery

**ONE-STOP SOLUTION**

**65kWh 30kW**

**130kWh 30kW**

**130kWh 60kW**





## Overview

---

Dual-glass type modules (also called double glass or glass-glass) are made up of two glass surfaces, on the front and on the rear with a thickness of 2.0 mm each. What is the thickness of a glass module?

The thickness of the front glass generally used for this type of structure is 3.2 mm. Dual-glass type modules (also called double glass or glass-glass) are made up of two glass surfaces, on the front and on the rear with a thickness of 2.0 mm each.

What is a double glass module?

The double glass module design offers not only much higher reliability and longer durability but also significant Balance of System cost savings by eliminating the aluminum frame of conventional modules and frame-grounding requirements. The application of double-glass modules covers multiple markets including utility, residential and commercial.

Why are double glass modules symmetrical?

Mechanical constraints on cells: the fact that the structure of the double glass modules is symmetrical implies that the cells are located on a so-called neutral line, the upper part of the module being in compression during a downward mechanical load and the lower glass surface being in tension.

What is a dual-glass module?

Dual-glass type modules (also called double glass or glass-glass) are made up of two glass surfaces, on the front and on the rear with a thickness of 2.0 mm each. Some manufacturers, in order to reduce the weight of the modules, have opted for a thickness of 1.6 mm. DualSun has chosen to stay with a thickness of 2.0 mm for reasons explained below.

What is double glass encapsulation?

Hermetic encapsulation: the double glass modules offer a hermetic structure,



resistant to aggressive weather conditions, the main one being moisture penetration highlighted during tests so-called Damp Heat, according to standard IEC 61215-2: 2021 (clause MQT13).

What is the thickness of a dualsun module?

Some manufacturers, in order to reduce the weight of the modules, have opted for a thickness of 1.6 mm. DualSun has chosen to stay with a thickness of 2.0 mm for reasons explained below. In both configurations, the photovoltaic cells are laminated between the front and rear sides of the module using an encapsulation material.



## Thickness of double-sided double-glass modules

---



Nominal Capacity  
**280Ah**  
Nominal Energy  
**50kW/100kWh**  
IP Grade  
**IP54**

### [What are Double Glass Solar Panels?](#)

With double-glass modules, the glass sheets at the front and back have the same thickness, and the neutral layer, which is in the middle, is not under any compressive or tensile ...

[Email Contact](#)

### [INSTRUCTIONS FOR PREPARATION OF PAPERS](#)

By choosing heat strengthened glass panels on both sides, we have been able to use a thickness of 2.5mm and to demonstrate an excellent module resistance to all standard mechanical tests ...

[Email Contact](#)



Energy storage(KWH)  
**102.4kWh**  
Nominal voltage(Vdc)  
**512V**  
Outdoor All-in-one ESS cabinet



### [PV CELLS & MODULES , Translucent Energy](#)

High double-sided rate [Email Contact](#)

### Double Glass Solar Panel Thickness Guide: Find Your Perfect ...

According to the Solar Energy Industries Association, properly installed double glass panels with 3.2mm thickness on both sides have survived Category 4 hurricanes with ...



[Email Contact](#)



### [Photovoltaic module double-sided glass](#)

Recently several double-glass (also called glass-glass or dual-glass modules) c-Si PV modules have been launched on the market, many of them by major PV manufacturers. These modules ...

[Email Contact](#)



### [Double-sided double-glass module structure](#)

The thickness of the front glass generally used for this type of structure is 3.2 mm. Dual-glass type modules (also called double glass or glass-glass) are made up of two glass surfaces, on the ...

[Email Contact](#)



### [Double the strengths. double the benefits](#)

Generally, the front and back glass layers in these modules have the same thickness, contributing to their balanced structural integrity. This design not only enhances the ...

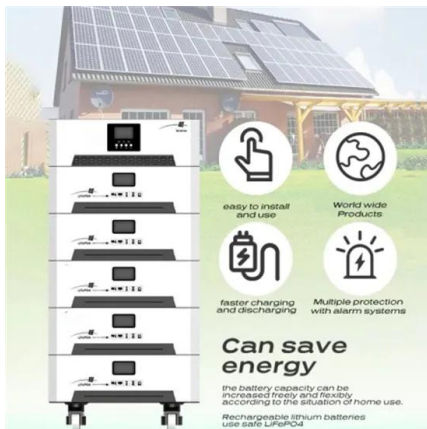
[Email Contact](#)



### 72 Pcs Bifacial Double Glass Module

Module efficiency leading in industry, up to 21.7%  
Double Sided power generation: Double-sided rate up to 70%, additional power generation of modules is up to 25% higher than conventional ...

[Email Contact](#)



### **BIPV-DOUBLE GLASS**

Double glass modules use double sided low iron tempered glass with solar cells laminated in between. Double glass modules are ideal for roofs, skylights and/or facades. Double glass ...

[Email Contact](#)

### **Thickness of double-sided glass of photovoltaic panels**

**ABSTRACT:** Double-glass modules provide a heavy-duty solution for harsh environments with high temperature, high humidity or high UV conditions that usually impact the reliability of ...

[Email Contact](#)



### **The weekend read: Double glass can spell double trouble**

Glass-glass modules are built to survive the toughest conditions and can deliver module lifetimes far exceeding the 20-30 years expected of glass-foil. The module concept is ...

[Email Contact](#)



### **Double-sided tape, transparent type, no substrate , NITTO ...**

Features A tape based on polyester film. Volatile gas content is ultra trace. Usage For laminating glass. For fixing the liquid crystal module material. For fixing electronic components. ...

[Email Contact](#)



### **Analysis of the Impact Resistance of Photovoltaic Panels ...**

Based on the status of the research results discussed above, this paper uses the effective thickness as an index to explore the impact resistance of a double-glass photovoltaic module ...

[Email Contact](#)

### **What are the advantages of dual-glass Dualsun modules?**

Dual-glass type modules (also called double glass or glass-glass) are made up of two glass surfaces, on the front and on the rear with a thickness of 2.0 mm each.

[Email Contact](#)



### **[Double the strengths. double the benefits](#)**

Generally, the front and back glass layers in these modules have the same thickness, contributing to their balanced structural integrity. This ...

[Email Contact](#)





### [Double-glass solar module laminating process](#)

The invention provides a double-glass solar module laminating process, which has the beneficial effects that: the thickness of the traditional adhesive tape is 0.06mm, and the thickness of the ...

[Email Contact](#)



### [D-Matrix Bifacial Double Glass Module](#)

Double glass solar panels have longer average lives and are essentially PID-immune. D-Matrix Bifacial module is one of the examples from Das Solar.

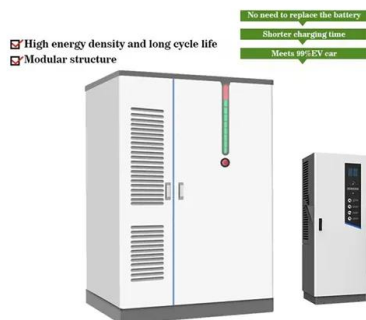
[Email Contact](#)



### **Double Glass Solar Panel Thickness Guide: Find Your ...**

According to the Solar Energy Industries Association, properly installed double glass panels with 3.2mm thickness on both sides have ...

[Email Contact](#)



### [Double Glass, Glass On Glass, and Bifacial Panels](#)

Conventional panels have a single glass sheet face, but some manufacturers also make glass-on-glass and bifacial solar panels. Are they ...

[Email Contact](#)





## Contact Us

---

For catalog requests, pricing, or partnerships, please visit:  
<https://www.ogrzewanie-jelenia.pl>