

# **What electricity price will be applied to 5G base stations**





## Overview

---

How much power does a 5G station use?

The power consumption of a single 5G station is 2.5 to 3.5 times higher than that of a single 4G station. The main factor behind this increase in 5G power consumption is the high power usage of the active antenna unit (AAU). Under a full workload, a single station uses nearly 3700W.

How much does a 5G base station cost?

[Click Here To Download It For Free!](#) Setting up a 5G base station is expensive, with costs ranging from \$100,000 to \$200,000 per site. This price includes hardware, installation, site rental, and maintenance. Urban areas often have higher costs due to land prices and infrastructure challenges.

Are 5G base stations causing more energy consumption?

However, Li says 5G base stations are carrying five times the traffic as when equipped with only 4G, pushing up power consumption. The carrier is seeking subsidies from the Chinese government to help with the increased energy usage.

Why does 5G use more power than 4G?

The data here all comes from operators on the front lines, and we can draw the following valuable conclusions: The power consumption of a single 5G station is 2.5 to 3.5 times higher than that of a single 4G station. The main factor behind this increase in 5G power consumption is the high power usage of the active antenna unit (AAU).

Does China Mobile have a 5G base station?

China Mobile has tried using lower cost deployments of MIMO antennas, specifically 32T32R and sometimes 8T8R rather than 64T64R, according to MTN. However, Li says 5G base stations are carrying five times the traffic as when equipped with only 4G, pushing up power consumption.



Will 5G cost more than 4G?

Estimates suggest that operating expenses (Opex) for 5G will be 30-50% higher than for 4G. This increase is due to higher energy consumption, increased site maintenance, and the complexity of managing a dense network of small cells and new frequency bands.



## What electricity price will be applied to 5G base stations

---



### [Modelling the 5G Energy Consumption using Real-world ...](#)

This paper proposes a novel 5G base stations energy consumption modelling method by learning from a real-world dataset used in the ITU 5G Base Station Energy Consumption Modelling ...

### [Email Contact](#)

### [\(PDF\) A Game Theoretic Analysis for Power Management and ...](#)

We propose a pricing model for suppliers to charge the BSs for electricity consumption when the renewable power supply cannot meet their total energy requirements.

### [Email Contact](#)



### [5G Infrastructure Costs: What Telcos Are Paying . PatentPC](#)

Setting up a 5G base station is expensive, with costs ranging from \$100,000 to \$200,000 per site. This price includes hardware, installation, site rental, and maintenance.

### [Email Contact](#)

### [Towards Integrated Energy-Communication-Transportation Hub: A Base](#)

Abstract The rise of 5G communication has transformed the telecom industry for critical applications. With the widespread deployment of 5G base stations comes a significant ...



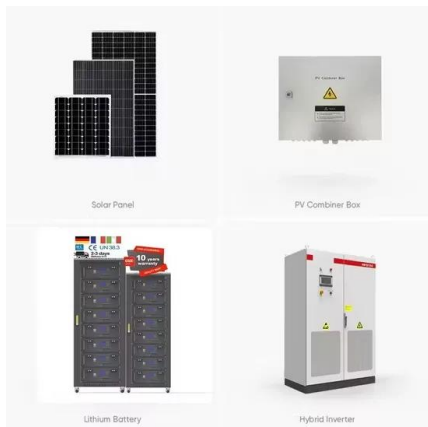
[Email Contact](#)



#### **fenrg-2022-943189 1..4**

Taking 100 renewables-assisted 5G base stations evenly distributed in an area of  $6 \times 6$  km, including three functional sub-areas as an example, the base stations are all 600 m apart, and ...

[Email Contact](#)



#### Massive 5G Electricity Costs are in Focus Ahead of ...

But there is some good news: once standalone, continuous 5G coverage is in place, and 5G devices are ubiquitous, the 2, 3, and 4G ...

[Email Contact](#)



#### Coordinated scheduling of 5G base station energy ...

With the rapid development of 5G base station construction, significant energy storage is installed to ensure stable communication. ...

[Email Contact](#)



48V 100Ah



### [5G Power: Creating a green grid that slashes costs, emissions & energy](#)

A joint innovation between China Tower and Huawei, 5G Power is a key advancement that will promote the maturity of the 5G power industry by introducing a new approach to the power ...

[Email Contact](#)



### [5G base stations use a lot more energy than 4G base stations: MTN](#)

A typical 5G base station consumes up to twice or more the power of a 4G base station, writes MTN Consulting Chief Analyst Matt Walker in a new report entitled " Operators ...

[Email Contact](#)

### [The power supply design considerations for 5G base stations](#)

This percentage will increase significantly with 5G because a gNodeB uses at least twice as much electricity as a 4G base station. The more operators spend on electricity, the ...

[Email Contact](#)



### [What is the Power Consumption of a 5G Base Station?](#)

Compared to its predecessor, 4G, the energy demand from 5G base stations has massively grown owing to new technical requirements needed to support higher data rates ...

[Email Contact](#)



### [Exploring power system flexibility regulation potential ...](#)

5G base stations (BSs) are potential flexible resources for power systems due to their dynamic adjustable power consumption. However, the ...

[Email Contact](#)



### [Cooperative Planning of Distributed Renewable Energy Assisted 5G Base](#)

emissions of 5G base stations (BSs). Meanwhile, battery swap ping (BSW) service for Electric two-wheelers (E2Ws) is a burgeoning method to address the issue of E2Ws ...

[Email Contact](#)

### [Multi-objective interval planning for 5G base station virtual power](#)

Large-scale deployment of 5G base stations has brought severe challenges to the economic operation of the distribution network, furthermore, as a new type of adjustable load, ...

[Email Contact](#)



### [Massive 5G Electricity Costs are in Focus Ahead of the Global ...](#)

But there is some good news: once standalone, continuous 5G coverage is in place, and 5G devices are ubiquitous, the 2, 3, and 4G equipment can be retired with a ...

[Email Contact](#)



### [Front Line Data Study about 5G Power Consumption](#)

The power consumption of a single 5G station is 2.5 to 3.5 times higher than that of a single 4G station. The main factor behind this increase in 5G power consumption is the high power ...

[Email Contact](#)



### **fenrg-2022-943189 1..4**

The power consumption of a 5G base station (BS) at full load is close to 4 kW, about three times that of a 4G BS (Han et al., 2021), which increases the pressure on electricity expenditure ...

[Email Contact](#)

### [The power supply design considerations for 5G base ...](#)

This percentage will increase significantly with 5G because a gNodeB uses at least twice as much electricity as a 4G base station. The ...

[Email Contact](#)



### [Optimal configuration of 5G base station energy storage ...](#)

To maximize overall benefits for the investors and operators of base station energy storage, we proposed a bi-level optimization model for the operation of the energy storage, ...

[Email Contact](#)





### [5G Infrastructure Costs: What Telcos Are Paying... PatentPC](#)

Setting up a 5G base station is expensive, with costs ranging from \$100,000 to \$200,000 per site. This price includes hardware, installation, site rental, and maintenance. ...

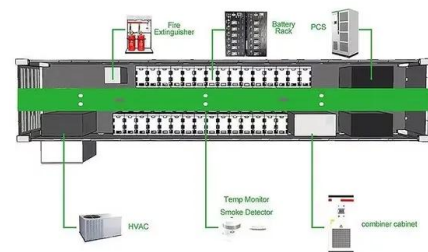
[Email Contact](#)



### [5G Base Stations: The Energy Consumption Challenge](#)

Early deployments indicate that 5G base stations require 2.5-3.5 times more power compared to a 4G one. Moreover, C-band, i.e., 3.4 GHz to 4.2 GHz, is deemed as the most popular 5G ...

[Email Contact](#)



### [Optimal Scheduling of 5G Base Station Energy Storage ...](#)

This article aims to reduce the electricity cost of 5G base stations, and optimizes the energy storage of 5G base stations connected to wind turbines and photovoltaics. Firstly, established ...

[Email Contact](#)



### [5G base stations use a lot more energy than 4G base ...](#)

A typical 5G base station consumes up to twice or more the power of a 4G base station, writes MTN Consulting Chief Analyst Matt Walker in a ...

[Email Contact](#)





### [5G Power: Creating a green grid that slashes costs, emissions](#)

This paper proposes a price-guided orientable inner approximation (OIA) method to solve the frequency-constrained unit commitment (FC-UC) with massive 5G base station ...

[Email Contact](#)

### Lithium battery parameters

Product capacity: 100Ah

Product size: 135\*197\*35mm

Product weight: 1.82kg

Product voltage: 3.2V

internal resistance: within 0.5



### [Energy-efficiency schemes for base stations in 5G heterogeneous](#)

In today's 5G era, the energy efficiency (EE) of cellular base stations is crucial for sustainable communication. Recognizing this, Mobile Network Operators are actively prioritizing EE for ...

[Email Contact](#)

### [Temporal and Spatial Optimization for 5G Base Station...](#)

Through direct load control based on incentive or guiding signal based on electricity price, the distributed energy resources participate in the energy interaction with the power grid.

[Email Contact](#)



### Applied Energy

Sketches of 4G and 5G macro base stations are shown in Fig. 5(a) and (b), re-spectively [91]. The number of antennas in 4G communication equipment is generally 8, while the number of ...

[Email Contact](#)





### [Aggregation and scheduling of massive 5G base station backup ...](#)

This paper proposes a price-guided orientable inner approximation (OIA) method to solve the frequency-constrained unit commitment (FC-UC) with massive 5G base station ...

[Email Contact](#)



## Contact Us

---

For catalog requests, pricing, or partnerships, please visit:  
<https://www.ogrzewanie-jelenia.pl>