

**What is the maximum volt that
a 60v lithium battery pack can
be charged to**





Overview

Charging elevates 60V battery voltage through CC-CV stages, peaking at 72V–74.4V. Lead-acid chargers apply 73.6V (2.45V/cell), while lithium systems demand precise $73.5V \pm 0.5\%$ to avoid overcharge. Pro Tip: Use temperature-compensated chargers—hot batteries require 0.3V/cell reductions. What voltage does a 60V lithium ion battery need?

For 60V lithium-ion batteries, the standard charging voltage is typically set between 54V and 58V. This range accounts for the battery's cell voltage characteristics and ensures that each cell in the battery pack is charged to its optimal level without exceeding its maximum voltage rating.

What voltage is a lithium ion battery?

A lithium-ion battery's nominal or standard voltage is nearly 3.60V per cell. Some battery manufacturers mark lithium-ion batteries as 3.70V per cell or higher. What voltage is overcharged on a lithium battery?

Overcharging means charging the lithium-ion battery beyond its fully charged voltage.

What is a safe voltage for a lithium ion battery?

Lithium-ion batteries function within a certain range at which their voltage operates optimally and safely. The highest range where the fully charged voltage of a lithium-ion battery is approximately 4.2V per cell. The lowest range which is the minimum safe voltage for lithium-ion batteries is approximately 3.0V per cell.

What is the nominal voltage of a battery pack?

This value is commonly used to specify battery packs and serves as a general reference for comparing different battery chemistries. For a 3S Li-ion battery pack (three cells in series), the nominal voltage would be 10.8V ($3.6V \times 3$). 2. Charged Voltage: The Maximum Voltage When Fully Charged What Is Charged Voltage?



What is the nominal voltage for a 3s Li-ion battery pack?

For a 3S Li-ion battery pack (three cells in series), the nominal voltage would be 10.8V ($3.6\text{V} \times 3$). 2. Charged Voltage: The Maximum Voltage When Fully Charged What Is Charged Voltage?

Charged voltage (also called full-charge voltage) is the highest voltage a cell reaches when fully charged.

How do I choose a lithium-ion battery pack?

When selecting a lithium-ion battery pack, understanding its voltage characteristics is crucial for ensuring optimal performance and longevity. Three key voltage terms define a battery's operation: Nominal Voltage, Charged Voltage, and Cut-Off Voltage.



What is the maximum volt that a 60v lithium battery pack can be ch



[Understanding the Charging Voltage of a 60V Battery](#)

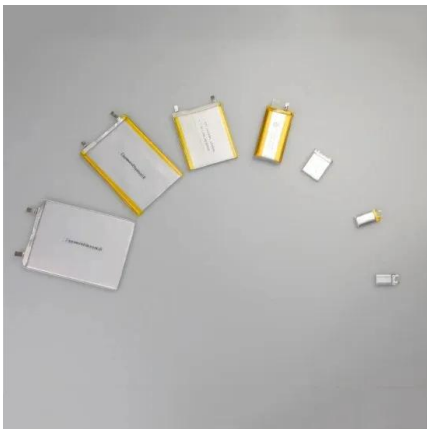
A 60V lithium-ion battery is typically charged to a voltage slightly higher than its nominal voltage, which can be around 67.2V when fully charged. However, the charging ...

[Email Contact](#)

[Battery pack voltage comparison chart](#)

There's a lot more overlap than other pack voltages. Note that not all pack ranges go to 100% because their peak voltage falls into a "gap" in the increments. I'm using ...

[Email Contact](#)



[How to Charge Lithium Batteries: Best Practices for Longevity and](#)

Charging lithium batteries correctly is crucial for maximizing their lifespan and ensuring safety. Following best practices can help prevent damage, enhance performance, ...

[Email Contact](#)

[A Guide to Understanding Battery Specifications](#)

Battery Basics Cell, modules, and packs - Hybrid and electric vehicles have a high voltage battery pack that consists of individual modules and cells organized in series and parallel. A cell is the ...

[Email Contact](#)



[60V 45Ah Li-Ion Battery Pack For E-Bikes, Scooters, ...](#)

60V 45Ah Li-Ion Battery Pack For E-Bikes, Scooters And Tricycles, Swappable Battery For Scooters, 60V Motorcycle Lithium Battery, OEM, ODM Enhance ...

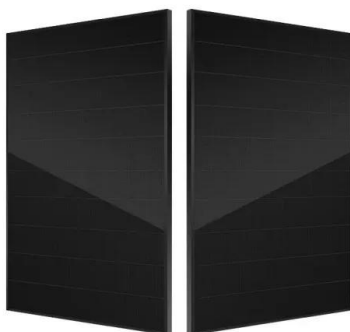
[Email Contact](#)



[Typical Charging Time for a 60V Lithium Ion Battery](#)

A 60V lithium ion battery typically consists of 16 lithium-ion cells connected in series. Each cell contributes about 3.7V nominal voltage, making up a combined 59.2V ...

[Email Contact](#)



[What Is A 60V Lithium Battery Voltage Chart?](#)

A 60V lithium battery voltage chart outlines state-of-charge (SoC) against voltage levels for lithium-ion (Li-ion) or lithium iron phosphate (LiFePO4) systems. At full charge, a 60V ...

[Email Contact](#)



[How to Use a 60V Lithium Battery Voltage Chart](#)

Using a 60V lithium battery voltage chart is essential for understanding your battery's performance, ensuring optimal usage, and prolonging its lifespan by monitoring ...

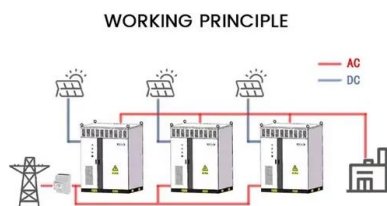
[Email Contact](#)



[Understanding the Best Way to Use a 60V Lithium...](#)

In this guide, we will reveal the battery voltage charts of different popular batteries, including lead-acid, deep cycle, LiFePO4, and AGM.

[Email Contact](#)



[20V/60V MAX* FLEXVOLT® 9Ah Battery](#)

Disclaimer (s) * Maximum initial battery voltage (measured without a workload) is 20, 60, and 120 volts. Nominal voltage is 18, 54, and 108. 120V MAX is based ...

[Email Contact](#)



[Battery pack voltage comparison chart](#)

There's a lot more overlap than other pack voltages. Note that not all pack ranges go to 100% because their peak voltage falls into a "gap" in the increments. I'm using XLOOKUP with the ...

[Email Contact](#)





[The Comprehensive Guide to LiFePO4 Voltage Chart](#)

By referencing a LiFePO4 lithium battery voltage chart, you can make informed decisions regarding charging, discharging, and overall battery management, ...

[Email Contact](#)



[Dewalt Battery Charge Time Chart \(An Ultimate Guide\)](#)

Dewalt Battery Charge Time Chart Removing the battery from the charger once it has been fully charged is essential. Leaving the battery in may result in overcharging, which ...

[Email Contact](#)

[What Is The 60V Battery Voltage Chart?](#)

A 60V battery voltage chart details the voltage ranges for charge/discharge states, typically spanning 52.5V (empty) to 72V (fully charged), varying by chemistry.

[Email Contact](#)



[The Ultimate Guide to Lithium-Ion Battery Voltage Charts \(12V, ...\)](#)

Lithium-ion batteries play an important role in modern technology due to their outstanding performance and wide range of applications. Whether it is a portable electronic ...

[Email Contact](#)





[Lithium Ion Battery Voltage Explained: Everything You ...](#)

The highest range where the fully charged voltage of a lithium-ion battery is approximately 4.2V per cell. The lowest range which is the minimum ...

[Email Contact](#)



[Guide to Lithium Battery Chargers: 9.6v, 58.8v, 60v ...](#)

By considering these factors, you can estimate the charging time for a 60V lithium battery and optimize the charging process for maximum ...

[Email Contact](#)

[Ultimate Guide to Lithium-Ion Battery Voltage Chart](#)

Different voltage sizes of lithium-ion batteries are available, such as 12V, 24V, and 48V. The lithium-ion battery voltage chart lets you determine the discharge chart for each ...

[Email Contact](#)



[Lithium Battery Voltage , Keheng LFP Supplier](#)

Keheng is a leading lithium batetry company, with extensive experience and deep industry background, dedicated to developing high-performance lithium ...

[Email Contact](#)



[Battery Voltage Explained: Nominal, Charged, Minimum, and Cut ...](#)

Charged voltage (also called full-charge voltage) is the highest voltage a cell reaches when fully charged. Exceeding this voltage can damage the battery and reduce its ...

[Email Contact](#)



[Lithium Ion Battery Voltage Explained: Everything You ...](#)

Voltage also tells you the state of charge (SoC) of the battery and indicates when to recharge the battery or avoid over-discharging. This article ...

[Email Contact](#)

[If a battery says "Nominal Voltage: 71.4v" is it a 60v battery](#)

Hmmm. I think whoever built the pack didn't use the right terminology. That is possibly a 17s lithium pack, with a maximum charging voltage of 71.4V. That'd be an approx 60V nominal ...

[Email Contact](#)



[Lithium Ion Battery Voltage Explained: Everything You Need to ...](#)

The highest range where the fully charged voltage of a lithium-ion battery is approximately 4.2V per cell. The lowest range which is the minimum safe voltage for lithium ...

[Email Contact](#)



14S battery @57.4 V or 15S @ 60V

When a 15S pack is fully charged to 4.2V per cell, it is 58.8V (very close to 60V) but after the first half minute of running, it immediately drops at ...

[Email Contact](#)



[Understanding the Best Way to Use a 60V Lithium Battery ...](#)

In this guide, we will reveal the battery voltage charts of different popular batteries, including lead-acid, deep cycle, LiFePO4, and AGM.

[Email Contact](#)

Contact Us

For catalog requests, pricing, or partnerships, please visit:
<https://www.ogrzewanie-jelenia.pl>