

What is the use of inverter peak power





Overview

What is inverter peak power?

Some appliances start with several times the power required for normal operation, but only for a short period of time. The purpose of inverter peak power is to ensure that the power inverter can handle the peaks of such appliances and protect the power inverter, thereby preventing the peaks from damaging the power inverter.

When can an inverter start?

Because these inductive loads require a large current to start at the moment of startup, the appliance can start normally only when the inverter peak power is greater than the starting power of the appliance. Under normal circumstances, the peak power is equal to 2 times the rated power. 2. Different types of load.

How are power inverters rated?

Power inverters are rated based on their continuous (rated) power output and their peak power capability. The continuous power rating indicates how much power the inverter can provide steadily over time, while the peak power rating shows how much power it can supply in short bursts.

How long does an inverter peak power last?

A: The peak power of an inverter generally only lasts for a few seconds, usually between 1 and 5 seconds, depending on the model and design. It is designed to cope with transient surges when an appliance starts, not for long periods. Understand the key differences between inverter peak power and rated power.

Can a 1000 watt inverter be rated as a peak power?

If the total energy consumption of your electrical equipment is 1000 watts, what you need is a power inverter with a rated power of 1000 watts or more,



and an inverter with a peak power of 1000 watts and a rated power of 500 watts is not suitable in this case. Is peak power a tasteless parameter?

no.

How big a power inverter is needed?

When determining how large a power inverter is needed, the difference between rated power and peak power must be distinguished. Peak power is also called peak surge power, which is the maximum power that can be maintained in a short period of time (usually within 20ms) when the power inverter starts.



What is the use of inverter peak power



[What Is The Power In An Inverter Device?](#)

What defines an inverter's power capacity? An inverter's power capacity hinges on its continuous wattage rating and peak surge capability. For example, a 3,000W inverter can ...

[Email Contact](#)

[What Does An Inverter Do? Complete Guide To ...](#)

Learn what inverters do, how they convert DC to AC power, types available, and applications. Complete guide with sizing tips, safety advice, and ...

[Email Contact](#)



[How to calculate or estimate power inverter's peak power](#)

What should be fine to consider as peak power output of an inverter when a motor starts for example? given that: Capacity (Rated Power): 935VA / 12 V Solar UPS ...

[Email Contact](#)

[Useful guide to inverter peak power and how to ...](#)

The purpose of inverter peak power is to ensure that the power inverter can handle the peaks of such appliances and protect the power ...

[Email Contact](#)



[What is Peak Power on an Inverter?](#)

Peak power is the highest wattage a power inverter can deliver for a short amount of time. An inverter will only be able to produce this extra power for a matter of seconds, 10 seconds at ...

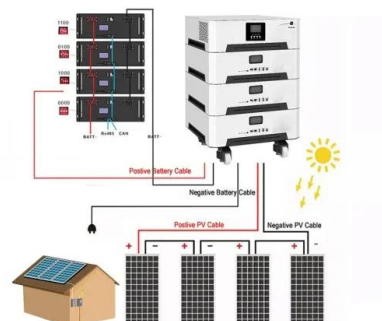
[Email Contact](#)



[What does a power inverter do, and what can I use one for?](#)

The inverter draws its power from a 12 Volt battery (preferably deep-cycle), or several batteries wired in parallel. The battery will need to be recharged as the power is drawn out of it by the ...

[Email Contact](#)



[Inverter Peak Power vs Rated Power: What it is and Why It Matters](#)

The peak power is set to cope with the inrush current that some appliances may generate momentarily during startup, so that the appliance can start up normally only if the ...

[Email Contact](#)





[Inverter Peak Power For Use: How Much is Enough?](#)

This article will discuss inverter peak power, why it is essential, how it compares to continuous power, and other information you need to know.

[Email Contact](#)



[What does a power inverter do, and what can I use one for?](#)

What does a power inverter do, and what can I use one for? A power inverter changes DC power from a battery into conventional AC power that you can use to operate all kinds of devices

[Email Contact](#)

[calculate inverter size for solar + Sizing Formula](#)

One of the prime things to take into consideration when delving deep into solar energy regard involves the inverter. The inverter changes ...

[Email Contact](#)



[Power Inverter Buying Guide . Eaton](#)

What is an Inverter? A power inverter is a device that converts low-voltage DC (direct current) power from a battery to standard household AC (alternating ...

[Email Contact](#)





What Are the 4 Operating Modes of A Hybrid Inverter?

Charge Valley Mode: Simultaneous use of PV + grid to prioritize use to loads before charging batteries (at this point the batteries are in a state of charge). During off-peak hours when ...

[Email Contact](#)



Useful guide to inverter peak power and how to choose an inverter

The purpose of inverter peak power is to ensure that the power inverter can handle the peaks of such appliances and protect the power inverter, thereby preventing the peaks ...

[Email Contact](#)



Power Inverters: What Are They & How Do They Work?

Key learnings: Inverter Definition: An inverter is defined as a power electronics device that converts DC voltage into AC voltage, crucial for ...

[Email Contact](#)



Difference between Max AC output power and Peak Power

Peak Power is generally a surge rating. For most low cost, high frequency inverters this number can simply be ignored as this so called peak power output is only for a few ...

[Email Contact](#)



[Understanding Inverters and How-to Select one that is ...](#)

For smaller inverters less than 200 watts, a normal automobile size battery is sufficient to power the inverter for short durations with the vehicle off. ...

[Email Contact](#)



[What do peak watts mean on an inverter?](#)

Your inverter's continuous watt rating must meet or exceed the running power of your devices. Starting Power (Peak Watts/Surge Power): Many electrical devices, especially those with ...

[Email Contact](#)

[Inverter Peak Power vs Rated Power: What it is and...](#)

The peak power is set to cope with the inrush current that some appliances may generate momentarily during startup, so that the appliance ...

[Email Contact](#)



[Explanation and Best Practices of Peak Shaving Solar...](#)

What is Peak Shaving and how does it work Peak shaving is a strategy employed in the realm of solar power management to maximize the ...

[Email Contact](#)



What does the peak power of the power inverter mean and what ...

The significance of peak power is to ensure that the power inverter can handle the spikes of such appliances and protect the power inverter, thereby preventing the spike from ...

[Email Contact](#)



Understanding Peak Power and I²t Protection in DC/AC Inverters

Peak power refers to the maximum power output that an inverter can provide for a short duration to manage sudden spikes in demand. This capability is essential in applications where the ...

[Email Contact](#)

Understanding Rated Power vs Peak Power: What It

Peak power, on the other hand, refers to the maximum amount of power an inverter can deliver for a brief period--usually just a few seconds. This capability is important for handling devices that ...

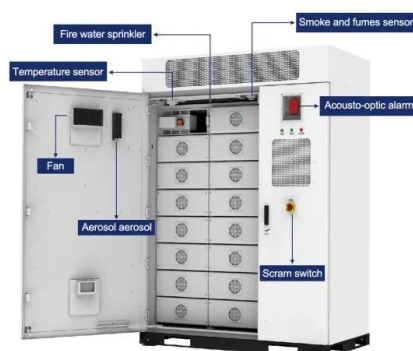
[Email Contact](#)



Advice on selecting an inverter - Sinetech

Continuous vs peak/surge watts Inverters are rated in continuous power and peak/surge power. Continuous power is the total WATTS the inverter can support indefinitely while peak/surge ...

[Email Contact](#)





[Understanding Rated Power vs Peak Power: What It ...](#)

Peak power, on the other hand, refers to the maximum amount of power an inverter can deliver for a brief period--usually just a few seconds. This ...

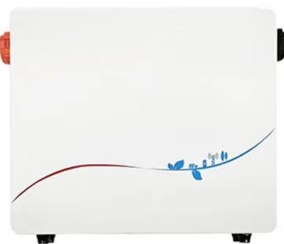
[Email Contact](#)



[What is the Peak Output Power of a Power Inverter?](#)

The continuous output power is the rated output power, and the peak output power is generally twice the rated output power. It is worth mentioning that the operating ...

[Email Contact](#)



[What is Inverter Efficiency and Why It Matters](#)

Inverter efficiency specifically measures how effectively an inverter converts DC to AC power, while energy efficiency considers the overall system's ability to use energy ...

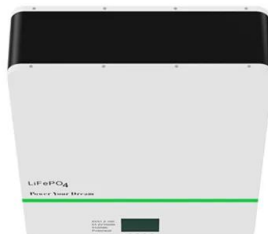
[Email Contact](#)



[Surge power time of phoenix inverter](#)

Good morning. How many seconds can a Phoenix inverter withstand peak power? Specifically the 500VA? Many manufacturers in the data sheet specify the possible time at ...

[Email Contact](#)





Contact Us

For catalog requests, pricing, or partnerships, please visit:
<https://www.ogrzewanie-jelenia.pl>