

# **What size 48v inverter should I choose for home use**





## Overview

---

Before we go any further, we highly recommend that you choose a pure sine wave inverter. This type of inverter delivers high-quality electricity, similar to your utility company.

We have summarized the appliances that inverters from 300W to 3000W can run depending on their rated maximum power. Note to our readers: Use the above formula to determine.

Do 24V & 48V solar inverters work better?

24V and 48V systems work better with modern MPPT solar charge controllers and high-voltage solar panels. Choosing between 12V, 24V, and 48V inverters depends on your power needs, available space, wiring budget, and long-term energy plans. Use 48V for large loads, long cable runs, and maximum efficiency.

What size inverter do I need for a refrigerator?

Choosing between 12V, 24V, and 48V inverters depends on your power needs, available space, wiring budget, and long-term energy plans. Use 48V for large loads, long cable runs, and maximum efficiency. What Inverter Size Is Needed to Run a Refrigerator?

.

How do I choose the right inverter size?

Here is our last bit of advice on how to select the correct inverter size: Check our inverter size chart. List all your appliances in the function of their power output. Apply our inverter size formula. Do not exceed 85% of your inverter's maximum power continuously. Oversize your inverter for extra appliances in the future.

How to choose a power inverter?

Second, select an inverter. For this example, you will need a power inverter capable of handling 4500 watts. The continuous power requirement is actually



2250 but when sizing an inverter, you have to plan for the start up so the inverter can handle it. Third, you need to decide how long you want to run 2250 watts.

How much power does an inverter need?

The continuous power requirement is actually 2250 but when sizing an inverter, you have to plan for the start up so the inverter can handle it. Third, you need to decide how long you want to run 2250 watts. Let's say you would like to power these items for an eight-hour period.

What are the different solar inverter sizes?

Solar generators range in size from small generators for short camping trips to large off-grid power systems for a boat or house. Consequently, inverter sizes vary greatly. During our research, we discovered that most inverters range in size from 300 watts up to over 3000 watts. In this article, we guide you through the different inverter sizes.



## What size 48v inverter should I choose for home use

---



### [How to Size an Inverter for a 48V 300Ah \(14.4kWh\) System - ...](#)

Sizing an inverter for a 48V 300Ah system, which equates to a total capacity of 14.4kWh, involves understanding both the power requirements of your appliances and the efficiency of the ...

[Email Contact](#)

### [When to Use a 24V or 48V Battery System Instead of a 12V System](#)

Practically all home systems will run off of either 12V, 24V, or 48V, so the inverter will have a step up transformer. This inverter will increase the voltage to either 110V, 120V, or 230V, ...

[Email Contact](#)



### [What Size Inverter Can I Run Off a 100Ah Battery? A ...](#)

When selecting an inverter to pair with a 100Ah battery, it's crucial to understand the power requirements of your appliances and the capabilities of your inverter. The right ...

[Email Contact](#)

### [12V vs 24V vs 48V Inverter: How to Choose the Right System for ...](#)

Confused about choosing between 12V, 24V, or 48V inverter systems? Discover which voltage is best for RV, solar, and off-grid setups. Learn the pros, cons, efficiency, cable ...



To calculate the wire and fuse size needed for the inverter you would take the inverter wattage, divide by 12V, then divide by 85% efficiency.

## Email Contact

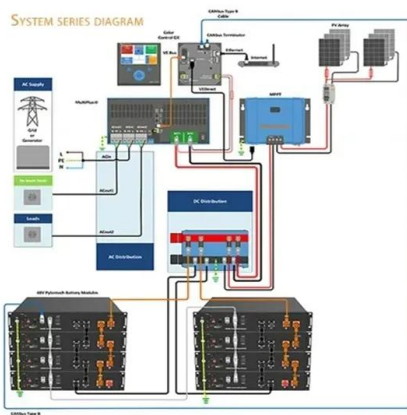
But whether you need a big inverter or a small inverter, you can figure out the appropriate size by taking a look through our inverter size calculator. First, ...

## Email Contact



**Match Your Inverter to Your Solar Panels:** Your inverter should have a capacity close to your solar panel system's capacity. A general rule of

### Email Contact

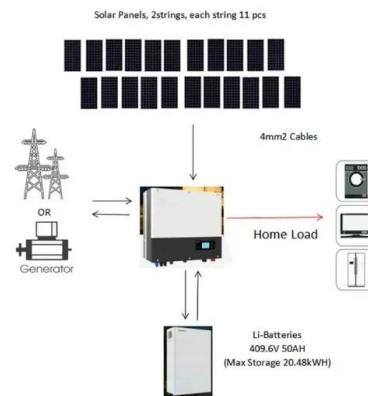




## [How to Determine the Correct Fuse for Your Inverter](#)

Discover how to choose the correct fuse size and type for your inverter with our guide. Power ratings, system voltage, current calculation, and fuse selection ...

[Email Contact](#)



## [A Guide to Choose the Right Inverter Size for Home](#)

Match Your Inverter to Your Solar Panels: Your inverter should have a capacity close to your solar panel system's capacity. A general rule of thumb is that the inverter size ...

[Email Contact](#)

## [Wire Sizing Chart for 12V, 24V, and 48V DC Systems ...](#)

Information on wire sizing and a universal AWG/mm2 wire sizing chart to help in designing a 12V, 24V, or 48V DC renewable energy system.

[Email Contact](#)



## [What Size Inverter Do You Need for Your Home? \\_ Renogy US](#)

Searching for the best power inverter for home? Wondering what size will perfectly meet your needs? This article helps you choose the right inverter for the house.

[Email Contact](#)



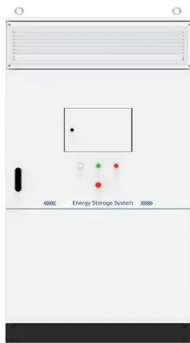
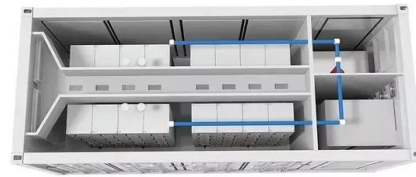




### [What Size Inverter Do You Need? A Complete Guide ...](#)

Choosing the right inverter size is crucial--too small, and your appliances won't work; too large, and you'll waste money. This guide will help ...

[Email Contact](#)



### [The Differences Between 24v and 48v Inverter: Which is Better?](#)

In standard off-grid solar systems, RVs, or mobile power installations, choosing between 24V and 48V inverters can be a difficult decision. This article will analyze the key ...

[Email Contact](#)

### [How Do You Calculate the Appropriate Inverter Size for a 48V ...](#)

In conclusion, calculating the appropriate inverter size for a 48V battery system involves determining total load, accounting for surge ratings, and selecting an inverter that ...

[Email Contact](#)



### **What Size Inverter Do I Need?**

But whether you need a big inverter or a small inverter, you can figure out the appropriate size by taking a look through our inverter size calculator. First, how much power does a power inverter ...

[Email Contact](#)



### [Recommended Inverter Cable, Breaker & Fuse Sizing](#)

This DIY solar resource helps DIY solar installers to size cables, breakers, and fuses for a battery-based 12V, 24V or 48V solar inverter.

[Email Contact](#)



### [How To Select The Correct Inverter Fuse Size](#)

Use our simple Inverter Fuse Size Calculator to select the right fuse for your inverter. Ideal for 240VAC inverters in your RV, boat or 4x4.

[Email Contact](#)



### [How to Choose the Right Inverter Size for Your Home](#)

In this guide, we'll walk you through calculating your home's power needs, understanding battery requirements, and why Leaptrend inverters are ...

[Email Contact](#)



### [Sizing the Right Inverter for 100ah Battery](#)

Step to calculate inverter size for 100ah battery: Calculate the total load you intend to use and add 20% for a safety margin. Select the inverter ...

[Email Contact](#)







### [What Size Inverter Do You Need for Your Home? -](#)

...

Choose a pure sine wave inverter for sensitive electronics and modern appliances. If you plan to expand your system (e.g., add solar panels ...

[Email Contact](#)

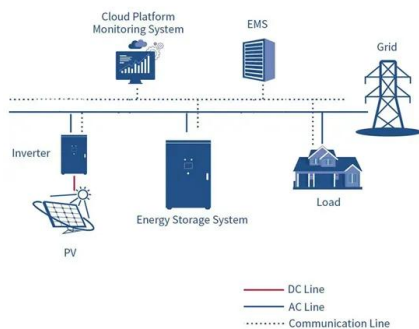


### [What Size Inverter Can I Run Off a 200Ah Lithium](#)

...

You can run an inverter rated between 1500W and 2400W off a 200Ah lithium battery depending on voltage and usage. Typically, a 12V ...

[Email Contact](#)



### [48V Solar Inverters: 2025 Buyer's Guide & Top Picks ?](#)

Conclusion A 48V solar inverter is a cornerstone of efficient off-grid or hybrid energy systems. Whether for daily household use or commercial backup power, opting for an MPPT ...

[Email Contact](#)



### [The Differences Between 24v and 48v Inverter: Which...](#)

In standard off-grid solar systems, RVs, or mobile power installations, choosing between 24V and 48V inverters can be a difficult ...

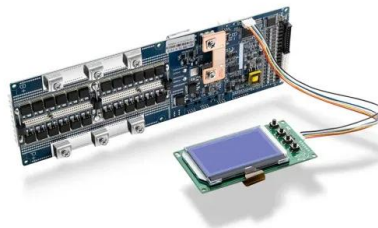
[Email Contact](#)



### [How to Choose the Right Inverter Size for Your Home](#)

In this guide, we'll walk you through calculating your home's power needs, understanding battery requirements, and why Leaptrend inverters are a top choice for ...

[Email Contact](#)



### [How do you determine what size of inverter you will need to](#)

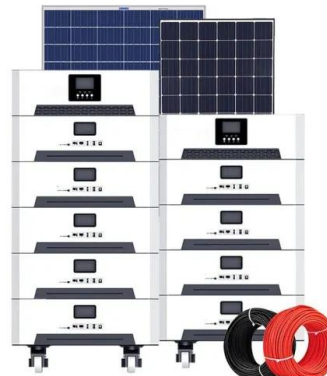
You use gallons of gas per miles driven You use an amount of electricity (kw) per hour. So, with that analogy, kwh is your gas tank size (how big your battery is) and your inverter is the size of ...

[Email Contact](#)

### [What Size Inverter Do You Need for Your Home? - PowerGen USA](#)

Choose a pure sine wave inverter for sensitive electronics and modern appliances. If you plan to expand your system (e.g., add solar panels or appliances), size your inverter ...

[Email Contact](#)



## Contact Us

For catalog requests, pricing, or partnerships, please visit:  
<https://www.ogrzewanie-jelenia.pl>