

What size inverter is suitable for 48 volts





Overview

What is a 48 volt inverter?

In other words, it is a device that can take current from a bank of batteries (48V) and convert it to the type supplied in the grid to power your appliances and devices. I suggest you use A 24-volt inverter or 36-volt inverter or 48-volt inverter when you need to power appliances over 3000 Watts.

Should I use a 24 volt or 48 volt inverter?

I suggest you use A 24-volt inverter or 36-volt inverter or 48-volt inverter when you need to power appliances over 3000 Watts. You may decide to use them even for appliances that are 2000Watts. When you use a 48-Volts inverter, you can use regular and more flexible connectors to connect the inverter to the battery bank.

Can a 48 volt inverter run a battery?

When you use a 48-Volts inverter, you can use regular and more flexible connectors to connect the inverter to the battery bank. This is so because the thinner the wire, the higher the resistance. And if your DC voltage is lower, you will pass more current through the wires, and they can get very hot, and you lose a lot of battery power.

How to calculate inverter size?

Using the Inverter Size Calculator is quick and easy. You'll need three inputs: Total Wattage (W): This is the total power consumption of all the appliances or devices you plan to run through the inverter. Safety Factor: A multiplier to ensure some buffer above your actual power requirement. Typically ranges from 1.1 to 1.5.

How to choose a power inverter?

Second, select an inverter. For this example, you will need a power inverter capable of handling 4500 watts. The continuous power requirement is actually



2250 but when sizing an inverter, you have to plan for the start up so the inverter can handle it. Third, you need to decide how long you want to run 2250 watts.

How much power does an inverter need?

The continuous power requirement is actually 2250 but when sizing an inverter, you have to plan for the start up so the inverter can handle it. Third, you need to decide how long you want to run 2250 watts. Let's say you would like to power these items for an eight-hour period.



What size inverter is suitable for 48 volts



[What size inverter do I need for a refrigerator?](#)

You could run most refrigerators using a 1500-watt pure sine wave inverter. Inverters of this size and type can consistently supply 1500 Watts of smooth AC power and ...

[Email Contact](#)

Microsoft Word

NB: When you add solar later, a 3 phase inverter can supply solar power to all 3 phases, while a single phase inverter used on 3 phase installations can only supply solar to that phase.

[Email Contact](#)



48V Inverter: The Ultimate Guide to Efficient and Scalable Power

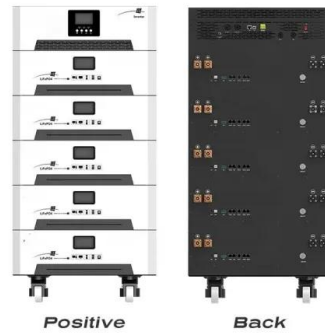
As solar power systems grow in size and capability, the demand for stable and scalable inverter solutions has increased. A 48V inverter is ideal for solar arrays above 3kW ...

[Email Contact](#)

[What Inverter Do I Need for a 48V Battery?](#)

To safely and efficiently use a 48V lithium battery, choose a 48V-rated pure sine wave or hybrid inverter, sized to your daily load, and compatible with CAN or ...

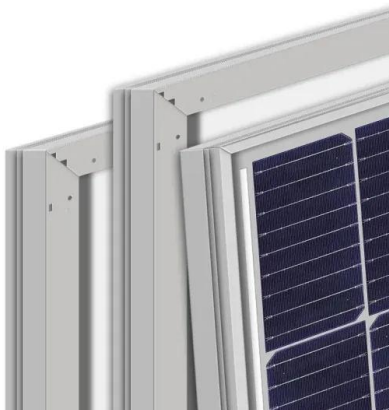
[Email Contact](#)



What Size Inverter Do I Need?

Whether you're looking for what size inverter is best for your house or something as simple as an inverter for power your TV, the proper size will be a ...

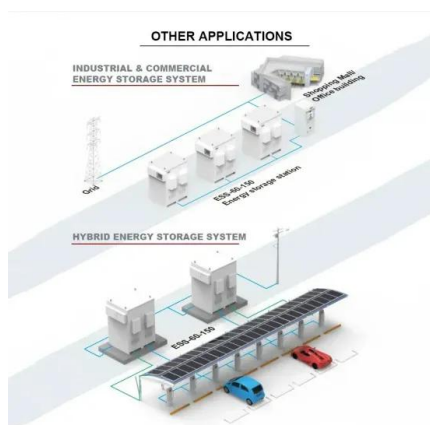
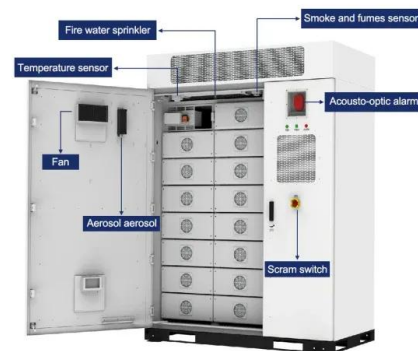
[Email Contact](#)



Understanding Battery Capacity and Inverter Compatibility

Considerations: Inverter Efficiency: Higher efficiency reduces energy loss and maximizes battery usage. Power Requirements: Match the inverter size to your peak and ...

[Email Contact](#)



2500W Pure Sine Wave Inverter-48V DC to 110V 120V AC Power ...

Buy aeliussine 2500W Pure Sine Wave Inverter-48V DC to 110V 120V AC Power Converter with 2 AC Outlets, 48 Volt Power Inverter for Truck, Rv, Camping, Home, ...

[Email Contact](#)



12V vs 24V vs 48V: How to Choose the Best Voltage for Your ...

Understand the advantages and disadvantages of 12V, 24V, and 48V systems, choose the best voltage solution suitable for your solar or off grid system, reduce costs, and ...

[Email Contact](#)



How Do You Calculate the Appropriate Inverter Size for a 48V ...

To calculate the size of the inverter you need, determine the total wattage of all devices you plan to power simultaneously. Add up their wattages, then choose an inverter with ...

[Email Contact](#)



Calculate Battery Size For Any Size Inverter (Using Our Calculator)

So I have made it easy for you, use the calculator below to calculate the battery size for 200 watt, 300 watt, 500 watt, 1000 watt, 2000 watt, 3000 watt, 5000-watt inverter

[Email Contact](#)



Battery Bank Size Calculations

Please be aware that when using an inverter, it should be connected directly to the battery bank and the battery bank must be of sufficient size to be able to ...

[Email Contact](#)



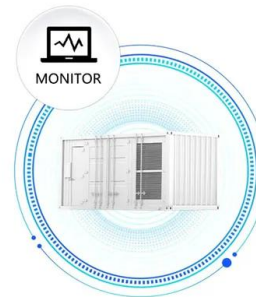


How Do I Calculate What Size Inverter I Need?

Having the right size inverter is vital for operating your appliances and devices properly. An undersized inverter will overload and potentially fail ...

[Email Contact](#)

SUPPORT REAL-TIME ONLINE
MONITORING OF SYSTEM STATUS



48v Inverter, 48v DC to 120v/220v AC Power Inverter

48V 2000W power inverter with universal socket and USB port, modified sine wave or pure sine wave output waveform are available. Option for 110V/120V ...

[Email Contact](#)

What Inverter Do I Need for a 48V Battery?

To safely and efficiently use a 48V lithium battery, choose a 48V-rated pure sine wave or hybrid inverter, sized to your daily load, and compatible with CAN or RS485 BMS communication.

[Email Contact](#)



The Best 48 Volt Inverter

When you use a 48-Volts inverter, you can use regular and more flexible connectors to connect the inverter to the battery bank. This is so because the thinner the wire, the higher the ...

[Email Contact](#)



What Size Inverter Do I Need?

Whether you're looking for what size inverter is best for your house or something as simple as an inverter for power your TV, the proper size will be a measurement based on the typical power ...

[Email Contact](#)



What gauge wire and fuse for 48v battery and 48/3000 ...

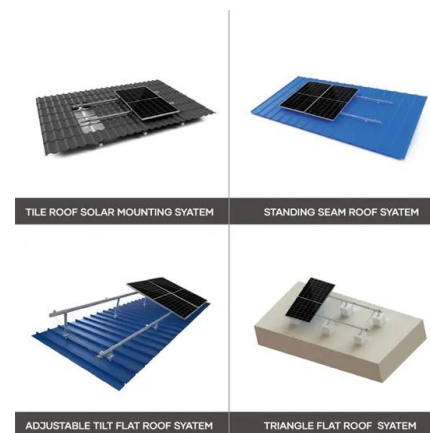
So I read all the links that popped up regarding this and they are all for 12v and couple for 24v which if I read correctly from other posts 12v ...

[Email Contact](#)

Inverter Size Calculator

What size inverter do you need? Add devices from the categories above, customize quantity and model details in the next step. Start by choosing items from the library on the left. You can ...

[Email Contact](#)



12V vs 24V vs 48V Inverter: How to Choose the Right System for ...

Confused about choosing between 12V, 24V, or 48V inverter systems? Discover which voltage is best for RV, solar, and off-grid setups. Learn the pros, cons, efficiency, cable ...

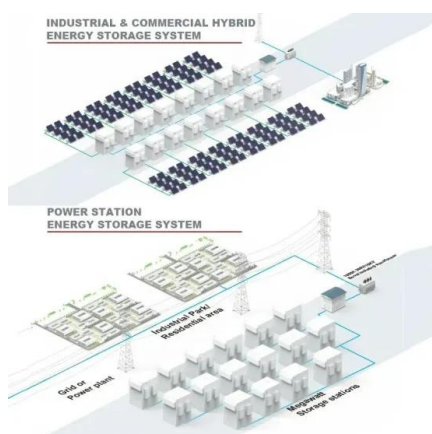
[Email Contact](#)



Choosing the Right Inverter: What Size Inverter Do I Need?

In this article, we will delve into this topic and shed light on the importance of choosing the appropriate inverter size to maximize the efficiency and power yield of your solar ...

[Email Contact](#)



Inverter Cable Size Calculator & Formula Online Calculator Ultra

Find More Calculator ? Understanding the appropriate cable size for your inverter is essential to ensure efficient power transmission and prevent potential hazards. This calculator ...

[Email Contact](#)

The Only Inverter Size Chart You'll Ever Need

So I have made it easy for you, use the calculator below to calculate the battery size for 200 watt, 300 watt, 500 watt, 1000 watt, 2000 watt, 3000 watt, 5000-watt inverter

[Email Contact](#)



Contact Us

For catalog requests, pricing, or partnerships, please visit:
<https://www.ogrzewanie-jelenia.pl>