

What size inverter should be used for a 46kw power station





Overview

Here's how inverter sizes usually correlate: Panels: 3,000 – 6,000 W Inverter: 3,000 W to 5,500 W Panels: 6,000 – 10,000 W Inverter: 5,500 W to 8,000 W (some size down to 5 kW depending on shading) Panels: 10,000 – 20,000 W Inverter: one or two inverters of a combined 10 kW–15 kW How many kW can a solar inverter generate?

Total capacity = $20 \times 500 = 10,000$ watts or 10 kW The industry standard suggests that the inverter's capacity should be between 80% to 125% of the solar panels' capacity. For example, if your panels generate 10 kW: Minimum inverter size = $10,000 \times 0.8 = 8$ kW Maximum inverter size = $10,000 \times 1.25 = 12.5$ kW.

What size solar inverter do I Need?

A 4.5 kW array (or ten 450-watt solar panels) would just about cover your consumption. The type of solar panels you choose can also impact the size of the inverter you need. Different types of solar panels have different wattage ratings and efficiency levels. The three main types of solar panels are monocrystalline, polycrystalline, and thin film.

How many kW inverters do I Need?

Therefore, we typically recommend 5 kW inverters which cater even to the peak demand of most British households. Most inverters charge and discharge at the same rate. However, this is not always the case. For example, the Tesla PW3 has a charge capacity of 5 kW and discharge capacity of 11.5 kW.

How much power does a 5 kW inverter use?

If your system pushes 5,000 watts, a 5,000-watt (or 5 kW) inverter is usually the move. But it's not always one-to-one. Some setups undersize the inverter a bit—say, 4.6 kW for 5 kW of panels—to save cash without losing much power. It's a balancing act between cost, performance, and when you actually use electricity.



What are the different types of power inverters?

They come in many different sizes and could be Rugged, Hybrid, or Inverter-Charger combinations. Some power inverters are optimized for specific needs, like Solar (extra energy can go back to the utility while giving your credit for your bills), and could be used on RVs, Trucks, Automotive, Boats, Vans, etc.

How to calculate inverter size?

Using the Inverter Size Calculator is quick and easy. You'll need three inputs: Total Wattage (W): This is the total power consumption of all the appliances or devices you plan to run through the inverter. Safety Factor: A multiplier to ensure some buffer above your actual power requirement. Typically ranges from 1.1 to 1.5.



What size inverter should be used for a 46kw power station



[What Inverter Size Do I Need to Run a Hair Dryer?](#)

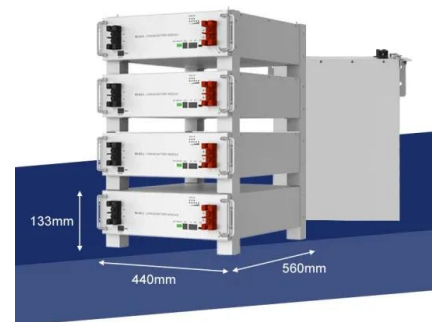
A 1500 watt hair dryer is not going to use 1500 watts of inverter power, not unless you use it for an hour. If you blow dry your hair for 15 minutes a day (the average for most people), inverter ...

[Email Contact](#)

[How to Choose the Right Size Solar Inverter: Step-by-Step with ...](#)

This guide walks you through calculating inverter size based on panel capacity, power usage, and safety margins. We use real examples from installations in Texas and ...

[Email Contact](#)



[Solar inverter size: Calculate the right size for your ...](#)

Most UK homes need at least a 5 kW inverter. While 3.68 kW is common, larger homes or those with batteries benefit from a 5 kW+ system.

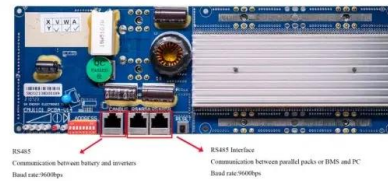
[Email Contact](#)

Inverter Size Calculator

When building a solar system, designing an off-grid power setup, or running appliances on backup power, one of the most essential steps is determining the correct inverter size. Choosing the ...



[Email Contact](#)



[Choosing the Right Inverter: What Size Inverter Do I Need?](#)

The size of the inverter you need depends on the total wattage requirements of the devices or appliances you want to power. To determine the appropriate size, you can calculate ...

[Email Contact](#)

[Solar Inverter Sizing Guide for Maximum Efficiency . Mingch](#)

In most cases, the inverter size should be close to the size of your solar panel system, within a 33% ratio. For example, a 6.6kW solar array often pairs with a 5kW inverter to ...

[Email Contact](#)



[What Size Inverter do I Need? \[with Examples\]](#)

Sizing an inverter is very simple, as long as you know how much power do you exactly need. If you think that at some point you will be plugging in more ...

[Email Contact](#)





[Selecting the Proper Inverter / Frequency Converter for your](#)

Whenever possible, we recommend using the low-frequency transformer isolated GS or Classic Series models for motor loads. The formula to use for all inverters which are to power motor ...

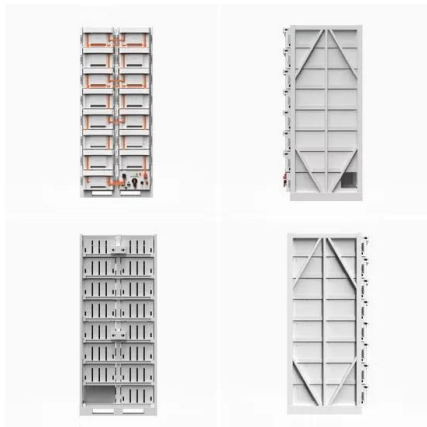
[Email Contact](#)



[Solar Inverter Sizing Guide for Maximum Efficiency](#)

In most cases, the inverter size should be close to the size of your solar panel system, within a 33% ratio. For example, a 6.6kW solar array often ...

[Email Contact](#)



[400W Solar Panel Kit \(DIY\): What Size Battery. Charge controller?](#)

In this guide, you'll learn, how many batteries, What size charge controller, what size inverter & what size cable you'll need for a 400-watt solar panel kit. Also how much power ...

[Email Contact](#)



1mwh (500kw/1mw)

AIR COOLING
ENERGY STORAGE CONTAINER



[How To Size A Solar Inverter in 3 Easy Steps](#)

Picking the right solar inverter isn't rocket science, but it's not a wild guess either. Match your inverter size to your solar panel output, leave a little ...

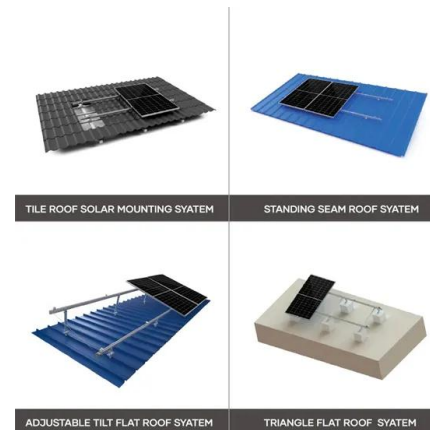
[Email Contact](#)



[What Size Solar Inverter Do I Need?](#)

The exact impact of your solar battery on inverter size depends on factors like battery capacity, inverter compatibility, and your specific energy ...

[Email Contact](#)



[What Size Inverter do I Need? \[with Examples\]](#)

Sizing an inverter is very simple, as long as you know how much power do you exactly need. If you think that at some point you will be plugging in more devices, consider that as well and ...

[Email Contact](#)

[Solar inverter size: Calculate the right size for your inverter](#)

Most UK homes need at least a 5 kW inverter. While 3.68 kW is common, larger homes or those with batteries benefit from a 5 kW+ system.

[Email Contact](#)



[calculate inverter size for solar + Sizing Formula](#)

One of the prime things to take into consideration when delving deep into solar energy regard involves the inverter. The inverter changes ...

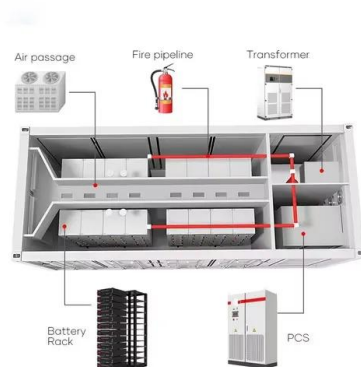
[Email Contact](#)



[Solar inverter size: Calculate the right size for your ...](#)

Discover why solar inverter sizing is important for efficiency and performance. Learn how to calculate the ideal inverter size for your solar panels, battery, ...

[Email Contact](#)



[Solar Inverter Sizing Calculator: Important Guide](#)

Choosing the right inverter depends on the system's capacity. Below is a guide for common system sizes: For a 10 kW solar system, an ...

[Email Contact](#)

[What Size Generator For Welding? \(How to Calculate It\)](#)

Without getting too technical, these designs use capacitors to filter out distortion, smoothing the power supply. Another benefit of inverter power ...

[Email Contact](#)

12.8V 200Ah



[What is the difference between an inverter and a ...](#)

In this guide, we'll explore the differences between inverters and power stations and help you decide which one is right for your needs. What is an Inverter? An ...

[Email Contact](#)



[Choosing and Sizing Batteries, Charge Controllers and Inverters ...](#)

The sum will tell you which inverter size you need. Don't forget that some appliances take more than their rated power at start-up. The inverter's surge rating should cover these temporary ...

[Email Contact](#)



- ☒ TELECOM CABINET
- ☒ BRAND NEW ORIGINAL
- ☒ HIGH-EFFICIENCY



[Solar Inverter Sizing Calculator: Important Guide](#)

Choosing the right inverter depends on the system's capacity. Below is a guide for common system sizes: For a 10 kW solar system, an inverter size between 8 kW to 12.5 kW is ...

[Email Contact](#)

[What Size Solar Inverter Do I Need? Experts Break It Down](#)

Picking the right solar inverter isn't rocket science, but it's not a wild guess either. Match your inverter size to your solar panel output, leave a little headroom, and don't cheap ...

[Email Contact](#)



[What Size Inverter Do I Need for My Solar Panel ...](#)

Inverters work most efficiently at their maximum power and as a general rule should roughly match the solar panel output. For instance, a 3kW ...

[Email Contact](#)



[What Will An Inverter Run & For How Long? \(With](#)

[...\)](#)

So I'm gonna explain to you guys in simple words about what you can run on your any size inverter and what are the key point to keep in mind. ...

[Email Contact](#)



[What size fuse between battery and inverter?](#)

Inverter efficiency (%) @ max. load: Inverters are not 100% efficient, which means they pull more power out of the battery than they deliver to the appliances. The efficiency of ...

[Email Contact](#)



Contact Us

For catalog requests, pricing, or partnerships, please visit:
<https://www.ogrzewanie-jelenia.pl>