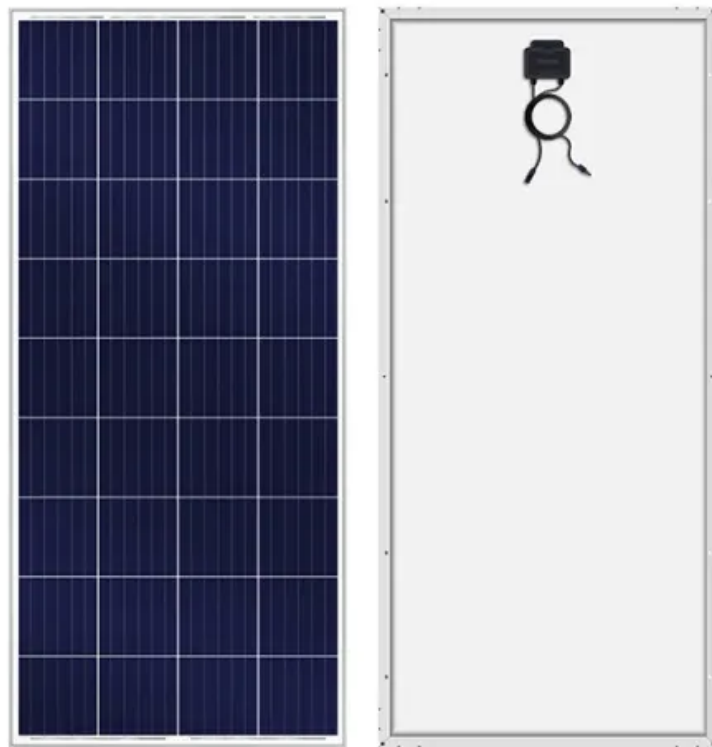


Which outdoor power supply is better fast charging or slow charging





Overview

Is fast charging better than slow charging?

Cost-effective as it doesn't require specialized accessories. In summary, if you value speed and convenience, fast charging is the way to go. However, slow charging method is better for battery longevity, if preserving battery health is a priority and time is not a constraint, slow charging is a better option. How Do I Turn on Fast Charging?

.

What is fast charging & how does it work?

Fast charging is a technology designed to charge your devices much faster than standard charging. It works by increasing the amount of power delivered to your device's battery, often through advanced protocols like Qualcomm's Quick Charge, USB Power Delivery (PD), or proprietary systems from brands like Samsung and Apple.

Can I use a standard cable instead of a fast charging cable?

Incompatible Cable: Using a standard cable instead of a fast-charging-compatible one can slow down the charging speed. Always use cables designed for fast charging. Device Limitations: Not all devices support fast charging. Check your device's specifications to ensure compatibility.

What is the difference between a fast charger and a standard Charger?

Fast chargers typically deliver a higher wattage—15W, 30W, or even up to 120W—compared to the 5W or 10W of a standard charger. This allows your device to gain a significant charge in a short period, making it ideal for those on the go. However, fast charging also has its nuances, which we'll discuss further in this article.

Why is my fast charger not working?



If your fast charger isn't performing as expected, several factors might be at play: **Incompatible Cable:** Using a standard cable instead of a fast-charging-compatible one can slow down the charging speed. Always use cables designed for fast charging. **Device Limitations:** Not all devices support fast charging.

Is fast charging safe?

Not necessarily. While slow charging generates less heat and is generally gentler on the battery, modern fast chargers are designed with safety features that regulate temperature and prevent overcharging. As long as you're using a certified fast charger, the risk to battery health is minimal. 2. Do You Need a Special Cable for Fast Charging?



Which outdoor power supply is better fast charging or slow charging



Bringing the Indoors Out: The Ultimate Guide to Outdoor Power and Charging

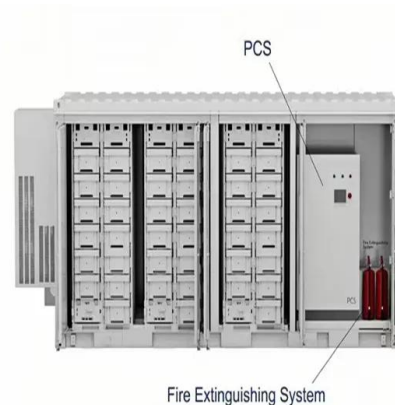
With more people charging up on the go, there is an increase in demand for efficient and quick charging outdoor power options. USB-C and fast charging technologies are becoming more ...

[Email Contact](#)

[How Does a Portable Power Station Charge](#)

Portable power stations charge through multiple methods--solar panels, wall outlets, car chargers, or even generators--but the process isn't as simple as plugging in a ...

[Email Contact](#)



Which is better for outdoor power supply fast charging or slow charging

Short Answer: Slow charging is better for lithium battery lifespan as it minimizes heat and stress, while fast charging offers convenience but may reduce long-term battery health.

[Email Contact](#)



[Fast Charging: How It Works and Why It's Important ...](#)

Learn how fast charging works and its importance for modern devices, enabling quicker recharges, meeting high power demands, and ...

[Email Contact](#)



Fast Charge vs Standard Charge

Two of the most common types are fast charge vs standard charge. In this article, we'll explore the differences between them and what they mean for your outdoor portable power stations.

[Email Contact](#)



[AC vs DC chargers: Understanding which charger is ...](#)

AC chargers AC chargers use alternating current from the power grid to charge your electric vehicle. Most homes and public charging stations provide AC ...

[Email Contact](#)

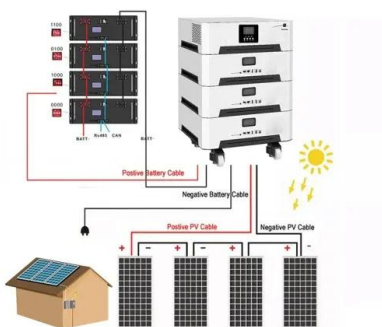
Support any customization



[The 10 Best Outdoor Power Stations of 2025](#)

Fast Charging Capabilities: Select power stations with efficient charging options to quickly recharge via solar or grid power, ideal for on-the-go usage. Pecron Portable Power ...

[Email Contact](#)





[The 5 Best Power Stations of 2025 , Tested & Rated](#)

After considering more than 40 models, we purchased and tested the top 7 power station competitors. Our extensive side-by-side tests measured the run-time delivered with ...

[Email Contact](#)



[What Is Fast Charging? Pros, Cons, and Impact on ...](#)

Is fast charging secretly harming your battery life? Many of us depend on this quick power-up solution to get through busy days, but ...

[Email Contact](#)

[Fast Charging vs. Slow Charging: Which Is Better? \[2025 Latest\]](#)

The debate between fast charging vs. slow charging boils down to your priorities. Fast charging offers speed and convenience, while slow charging focuses on long-term battery ...

[Email Contact](#)



Support Customized Product



[Fast Charging vs. Slow Charging: Which Is Better?](#)

The debate between fast charging vs. slow charging boils down to your priorities. Fast charging offers speed and convenience, while slow ...

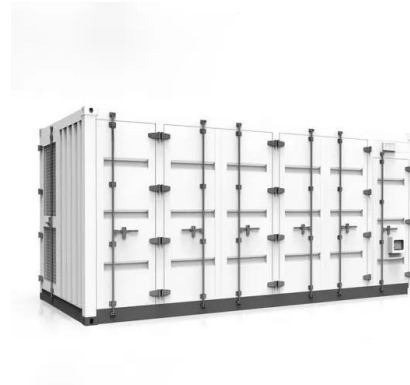
[Email Contact](#)



[How to Choose the Best Charging Method for an Outdoor Power Supply](#)

Below, we will introduce several common outdoor power supply methods and their typical application scenarios to help you make an informed decision for your next camping trip, ...

[Email Contact](#)



[Which is better for outdoor power supply fast charging or slow ...](#)

Short Answer: Slow charging is better for lithium battery lifespan as it minimizes heat and stress, while fast charging offers convenience but may reduce long-term battery health.

[Email Contact](#)

Fast Charge vs Standard Charge

Two of the most common types are fast charge vs standard charge. In this article, we'll explore the differences between them and what they mean for your ...

[Email Contact](#)



[Best Charging Speeds: 18W vs. 30W vs. 65W Power Banks - ...](#)

In this guide, we'll break down 18W vs. 30W vs. 65W power banks and help you pick the best one for your needs. If you want to dive deeper into how fast charging works, ...

[Email Contact](#)





Fast Charging vs Slow Charging

Fast charging undoubtedly brings many advantages, but it is essential to weigh these against its drawbacks. Let's dive deeper into the pros and cons. One of the most ...

[Email Contact](#)



Ebike Charging; Fast or Slow?

We recommend you stick to slow charging (4 hours or more) or go with a charger that can switch between fast and slow charges like the Luna Charger. Now if ...

[Email Contact](#)

[Some Say Fast Charging Ruins Your Phone Battery.](#)

Fast charging will power up your phone in a hurry, but is it safe to use? I've heard people worry about this charging myth, but modern phones ...

[Email Contact](#)



[Bringing the Indoors Out: The Ultimate Guide to Outdoor Power ...](#)

With more people charging up on the go, there is an increase in demand for efficient and quick charging outdoor power options. USB-C and fast charging technologies are becoming more ...

[Email Contact](#)





[How to Choose the Best Charging Method for an Outdoor Power ...](#)

Below, we will introduce several common outdoor power supply methods and their typical application scenarios to help you make an informed decision for your next camping trip, ...

[Email Contact](#)



[Fast Charging vs Slow Charging: Which is Better for your Lithium](#)

Discover the pros and cons of fast charging vs. slow charging for lithium batteries. Find out which method is best for your device.

[Email Contact](#)

[Chill Out, Charge Slow: A Guide to Gentle Charging ...](#)

Slow charging is often the preferred method for maintaining battery health and prolonging its lifespan. Learn why slow charging is ...

[Email Contact](#)



[Types of Battery Charging \(Charging Methods\)](#)

What are the Different Types of Charging Methods? The three main types of electric vehicle charging are slow, fast, and rapid. Slow charging is typically done overnight at ...

[Email Contact](#)



[How to choose an outdoor power supply?](#)

TOPWELL 500W portable outdoor power supply has done a good job in this aspect. The temperature control of the whole power supply is very good, and the AC output of 220V is ...

[Email Contact](#)



[Slow Charging vs. Fast Charging: Which is Better? - PT. Panca ...](#)

One key decision is choosing between slow charging (AC) and fast charging (DC). This guide breaks down the differences, benefits, and latest technologies to help you make an ...

[Email Contact](#)



[EV Charger Types Explained: Slow to Rapid](#)

Slow charging forms the backbone of electric vehicle ownership, delivering AC power between 3kW and 7kW through your home's electrical supply. This charging method ...

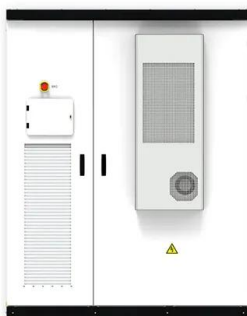
[Email Contact](#)



[Tesla Charging Slow? Key Causes And Best Fixes To ...](#)

Why is your Tesla charging slowly? Learn about common causes like cold weather, battery state, and shared chargers, plus tips to boost charging speed.

[Email Contact](#)

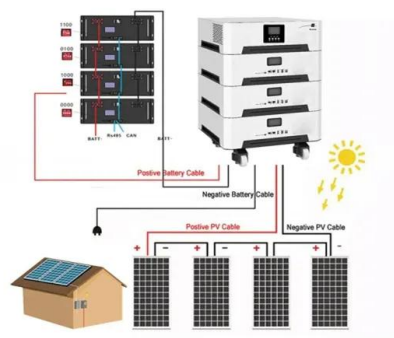




[Fast Charging vs Slow Charging: Which charging method is more ...](#)

The goal of this article is to provide a comprehensive perspective to compare the advantages and disadvantages of slow charging and fast charging, allowing you to understand ...

[Email Contact](#)



Contact Us

For catalog requests, pricing, or partnerships, please visit:
<https://www.ogrzewanie-jelenia.pl>